

Atlona VGA & USB w/Audio to HDMI Converter

AT-HDView



User Manual

Table of Contents

| | |
|--|-------|
| 1. Introduction | 3 |
| 2. Package Contents | 3 |
| 3. Features | 3 |
| 4. Applications | 3 |
| 5. Specification | 3 |
| 6. Panel Description | |
| a. Top Panel | 4 |
| b. Left Panel | 4 |
| c. Right Panel | 5 |
| d. Bottom Panel | 5 |
| 7. Activating a VGA output on a Laptop | 5 - 7 |
| 8. Connection Diagram | 8 |
| 9. Safety Information | 9 |
| 10. Warranty | 10 |
| 11. Atlona Product Registration | 11 |

INTRODUCTION

The Atlona AT-HDView is designed to take video and audio signal from a PC or Laptop and upscale it to digital HDMI output of wide-ranged HDTV and PC resolutions, up to 1080p. The AT-HDView is a plug and play device, automatically sensing the native resolution of the display and scales the computer's output to match it. The converter will take audio signal from the computer and embedded it into the HDMI signal output, so that user is able to enjoy both audio and video through one cable. The HDView is a scaler-converter, which means that it will always work without any adjustments to the video card software in addition to the video quality's ability to dramatically increase due to the built-in high quality scaler. The Atlona converter is USB powered and therefore will not require additional power supplies.

PACKAGE CONTENTS:

- AT-HDView
- (1 foot VGA, Audio and USB Cables are built-in into the converter)
- 6ft HDMI Cable

FEATURES:

- Display VGA signals out of Laptop or Desktop to an HDTV or a Monitor
- Audio Compatible, the converter will take audio from the computer and embedded it to the HDMI output along with video signal
- High Quality scaler allows any PC resolution to be scaled to a native resolution of the display up to 1080p
- Converter will automatically sense the native resolution of the display and adjust to the output to that resolution, manual selection is also available
- Supports resolutions of up to 1920 x 1200 (reduced blanking)
- USB Powered
- VGA, Audio and USB pig-tail cables are attached to the converter
- Plug & Play
- 6ft HDMI Cable is Included

APPLICATIONS:

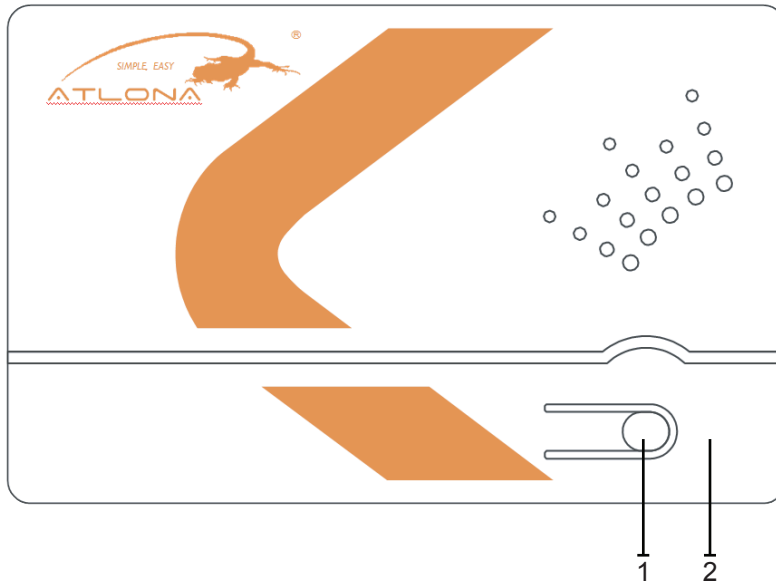
- Convert PC signal to an HD TV or monitor

SPECIFICATIONS:

| | |
|-------------------|--|
| Input Ports | VGA, USB and Audio (3.5mm input) |
| Output Ports | HDMI |
| Output Resolution | 480p@60, 720p@60, 1080p@60, 1280x800@60, 1366x768@60, 1920x1200@60 (Reduced Blanking) |
| Input Resolution | 640x480, 800x600, 1024x768, 1280x800, 1280x768, 1280x1024, 1680x1050, 1600x1200, 1920x1080, 1920x1200 (Reduced Blanking) |
| Dimensions(mm) | 4.4(W) x 2.5(D) x 1(H) |
| Weight(g) | 0.5LB |

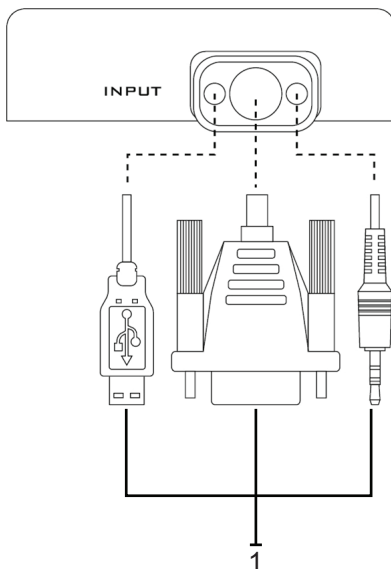
PANEL DESCRIPTION

1. Top Panel



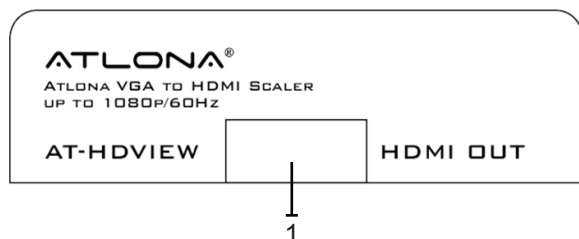
1. Manual Timing Button: Press this button when switching the resolution. There are a total of six manual timing modes available.
2. Power LED: The RED LED light will illuminate when the power is on.

2. Left Panel



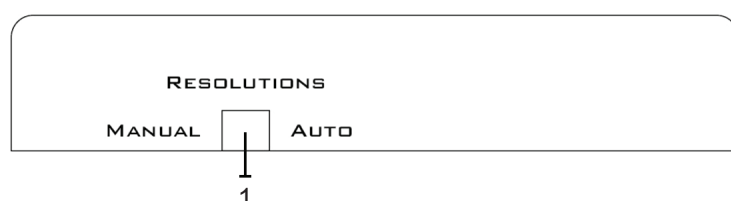
1. USB, VGA & Audio cable: Connect each cable to your PC accordingly (i.e. USB to USB port on the computer)

3. Right Panel



1. HDMI OUTPUT: Connect this slot with HDMI cable from the output display HDTV or monitor

4. Bottom Panel



1. Resolutions switch: Switch the resolution between manual and auto. There are a total of six built-in resolutions available on this device. Move the switch to auto and the device will detect EDID displays as well as show the best available resolution. OSD will appear on the left top corner of the display with selected timing.

ACTIVATING A VGA OUTPUT ON A LAPTOP

Most laptops have the VGA output disabled by default. In order to use Atlona converter user would have to enable it.

There are 2 x configurations:

A) Mirror mode. In this mode, your desktop (or screen) is duplicated on the second display, so your audience sees what's on your screen. For example, use Mirrored mode if you're recording ideas as people mention them during a brainstorming session and you want participants to see what's being recorded. The main downside of this mode is that instant message pop-ups, e-mail notifications, and other potentially annoying messages appear on the screen. Also, if you browse for a file or switch between programs, your audience will see these actions on the second display.

Note: Most laptops have the VGA output disabled by default. User would have to press a combination of buttons to enable it.

1. On your laptop's keyboard, find the key marked "Function" or "Fn" (usually on the lower left corner of the keyboard).
2. Then, search for a key that has either the letters "CRT/LCD" or a little monitor icon. Most often, it will be in the top row of keys marked F1 through F12, but not always.
3. When you have keys located, press the FUNCTION key and then the LCD/CRT key that you located before at the same time. It might take a couple of seconds for the computer to react.
4. This should toggle the screen image through a cycle like this:
Image on Laptop Screen – Image on Projector – Image on Both (to go from one mode to another, you would have to simultaneously press Function key and LCD/CRT at the same time)

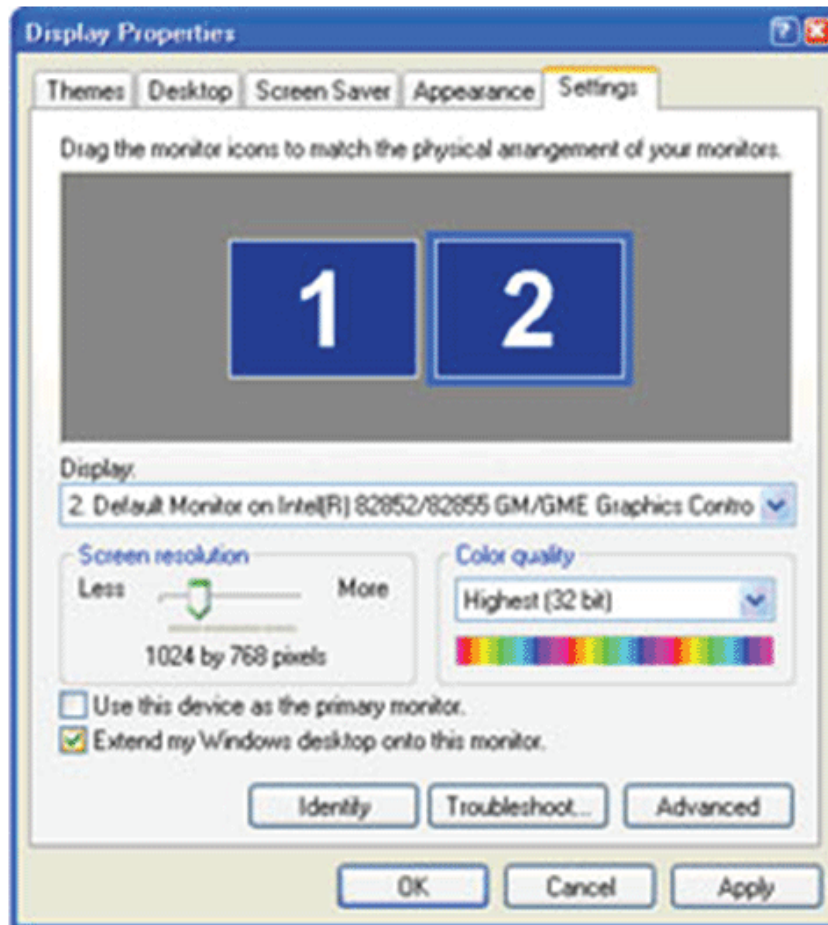


B). Extended mode.

In this mode, you extend your mobile PC screen space by using an additional display (whether a monitor or a projector screen). You can then use each screen independently. This mode is well suited for presentations because you can display the slides on one screen (usually the projector), and then hide notifications and other miscellaneous messages, and complete other tasks, such as taking notes, on your mobile PC screen. This mode is also very useful when you want to extend your workspace while using your mobile PC at your desk.

Note: Most laptops have the VGA output disabled by default. User would have to make a few adjustments in the adjustments in the video settings to enable the mode.

1. Right-click the desktop of your mobile PC, and then click Properties on the shortcut menu.
2. In the Display Properties dialog box, on the Settings tab, click the blue rectangle with the number 2 (which represents the external monitor), and then select the Extend my Windows desktop onto this monitor check box.
3. Under Screen resolution, drag the slider to the right to change the screen resolution of Monitor 2 to 1024 by 768 pixels, and then click OK.



4. When prompted, click Yes.

Note: If your desktop background does not appear on the external monitor, click No, and then repeat step 3 to decrease the screen resolution.

Adjust the position of the monitors

By default, Windows places the second screen to the right of the first (or primary) one. You can change the position of the monitors to reflect their physical position.

1. Right-click the desktop of your mobile PC, and then click Properties on the shortcut menu.
2. In the Display Properties dialog box, on the Settings tab, drag the graphical representation of Monitor 2 (the blue box with the number 2 in it) to the left of Monitor 1, and then click OK.
3. When prompted, click Yes.

Adjust your screen settings

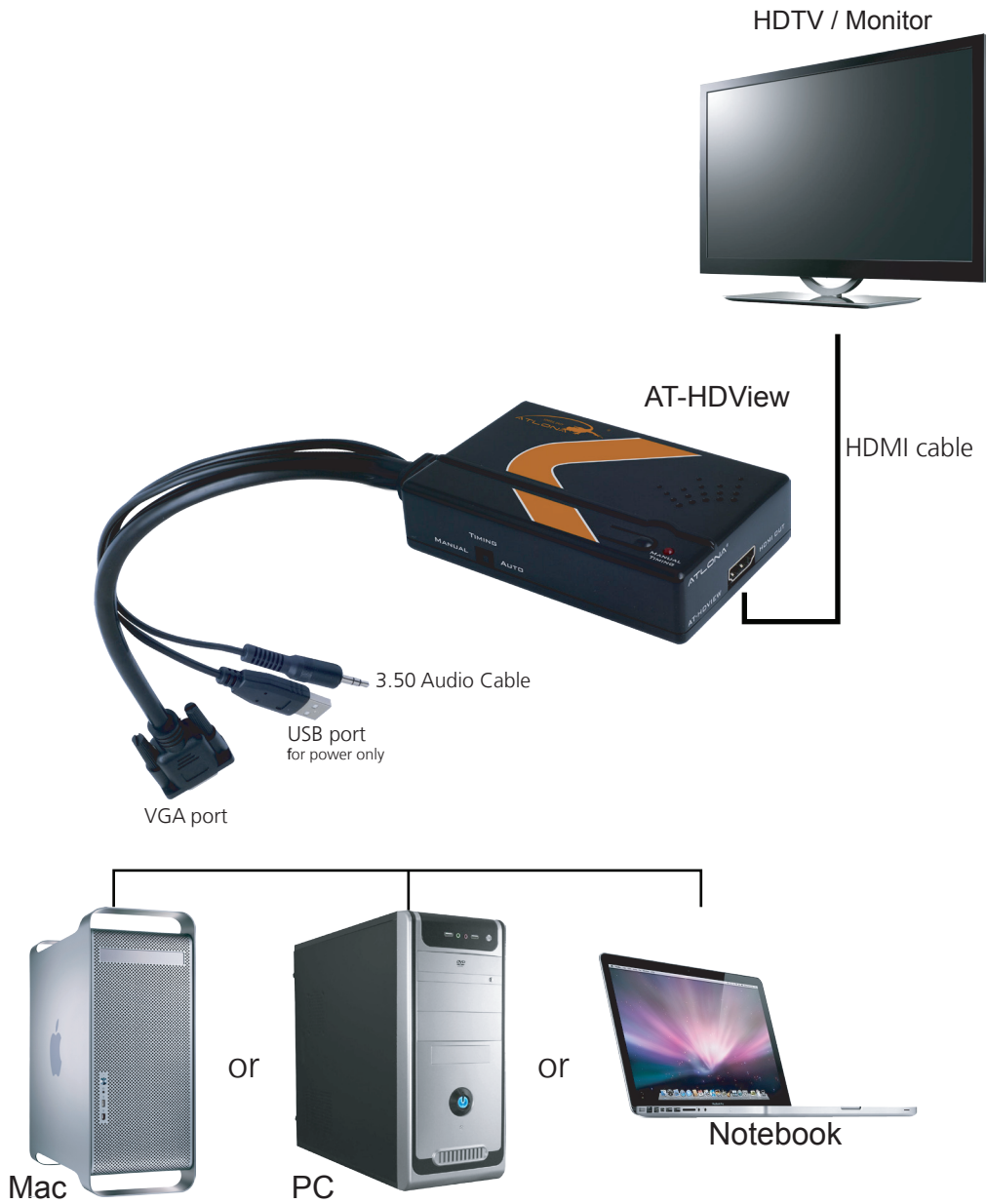
When you first enable Extended Desktop mode, your taskbar and any icons on your desktop appear on the mobile PC screen; desktop space without icons appear on the external monitor. You may find it easier to show the taskbar on the external monitor since it is usually the larger of the two screens.

1. On your mobile PC screen, right-click an empty area of the taskbar, and then click Lock the Taskbar.
2. Drag the taskbar to the external desktop and drop it where you want it to appear.

You can now take advantage of the extra screen space by dragging program windows to the external monitor. You can also resize windows to stretch across the two screens.

By taking advantage of additional monitors, you can share information with others more effectively when you're giving a presentation and also improve your productivity by extending your workspace when you're using your mobile PC at your desk.

CONNECTION AND INSTALLATION



Note: USB only used for power

Safety Information

Safeguards



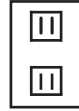
To reduce the risk of electric shock, do not expose this product to rain or moisture



Do not modify the wall plug. Doing so will void the warranty and safety features.



If the wall plug does not fit into your local power socket, hire an electrician to replace your obsolete socket.



This equipment should be installed near the socket outlet and the device should be easily accessible in the case it requires disconnection.

Precautions

FCC regulations state that any unauthorized changes or modifications to this equipment, not expressly approved by the manufacturer, could void the user's authority to operate this equipment.

Operate this product using only the included external power supply. Use of other power supplies could impair performance, damage the product, or cause fires.

In the event of an electrostatic discharge this device may automatically turn off. If this occurs, unplug the device and plug it back in.

Protect and route power cords so they will not be stepped on or pinched by anything placed on or against them. Be especially careful of plug-ins or cord exit points from this product.

Avoid excessive humidity, sudden temperature changes or temperature extremes.

Keep this product away from wet locations such as bathtubs, sinks, laundries, wet basements, fish tanks, and swimming pools.

Use only accessories recommended by Atlona to avoid fire, shock, or other hazards.

Unplug the product before cleaning. Use a damp cloth for cleaning and not cleaning fluid or aerosols. Such products could enter the unit and cause damage, fire, or electric shock. Some substances may also mar the finish of the product.

Never open, remove unit panels, or make any adjustments not described in this manual. Attempting to do so could expose you to dangerous electrical shock or other hazards. It may also cause damage to your AT-HDView. Opening the product will void the warranty.

Do not attempt to service the unit. Disconnect the product and contact your authorized Atlona reseller or contact Atlona directly.

Warranty

Limited Warranty

Atlona Technologies warrants that (a) its products (AT-HDView) will perform substantially in accordance with the accompanying written materials for a period of 3 years from the date of receipt and (b) that the product will be free from defects in materials and workmanship under normal use and service for a period of 3 years. In the event applicable law imposes any implied warranties, the implied warranty period is limited to 3 years from the date of receipt. Some jurisdictions do not allow such limitations on duration of an implied warranty, so the above limitation may not apply to customers that fall within those areas.

Customer Remedies

Atlona Technologies' and its suppliers' entire liability and Customer's exclusive remedy shall be, at Atlona Technologies' decision, either return of the price paid for the product, repair, or replacement of the product that does not meet this Limited Warranty and which is returned to Atlona Technologies with a copy of the Customer's receipt. This Limited Warranty is void if failure of the product has resulted from accident, abuse, misapplication, or natural occurrence. In example but not limited to: power surges (electrical storms, local power outage), dropping the product (or items on the product), contact with fluids, and physical misconduct (i.e. kicking or punching). Any replacement product will be warranted for the remainder of the original warranty period.

No other warranties

To the maximum extent permitted by applicable law, Atlona Technologies and its suppliers disclaim all other warranties, either expressed or implied, including, but not limited to, implied warranties of merchantability and fitness for a particular purpose, with regard to the product and any related written materials. This Limited Warranty gives customer specific legal rights. Customers may have other rights depending on the jurisdiction.

No liability for damages

To the maximum extent permitted by applicable law, in no event shall Atlona Technologies or its suppliers be liable for any damages arising out of the use of or inability to use this product, even if Atlona Technologies has been advised of the possibility of such damages. Such damages include but are not limited to: special, incidental, consequential, or indirect damages for personal injury, loss of business profits, business interruption, loss of business information, or any other pecuniary loss. Atlona Technologies' and its suppliers' entire liability under any provision of this agreement shall be limited to the amount actually paid by you for the product. Some Jurisdictions do not allow the exclusion or limitation of liability for consequential or incidental damage. The above limitations may not apply to you in such jurisdictional cases.

Atlona Product Registration

Thank you for purchasing this Atlona product. - We hope you enjoy it and will take an extra few moments to register your new purchase.

Registration creates an ownership record if your product is lost or stolen and helps ensure you'll receive notification of performance issues and firmware updates.

At Atlona, we respect and protect your privacy, assuring you that your registration information is completely secure. Atlona product registration is completely voluntary and failure to register will not diminish your limited warranty rights.

To register go to: <http://www.atlona.com/registration>