

Three-Input Switcher for HDMI and VGA Inputs with HDBaseT Output

AT-HDVS-150-TX-PSK Installation Guide



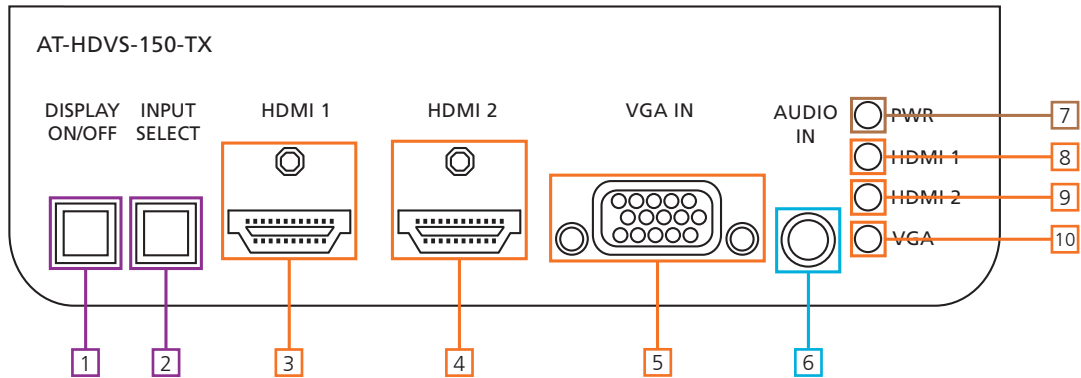
Please check <http://www.atlona.com/product/AT-HDVS-150-TX-PSK> for the most recent **firmware update** or **manual**.

The Atlona AT-HDVS-150-TX-PSK is a 3×1 switcher with two HDMI inputs, a VGA input with audio, and an HDBaseT™ output. Video signals up to 1080p, plus embedded audio and control can be transmitted up to 230 feet (70 meters), and up to 130 feet (40 meters) for 4K/UHD video @ 60 Hz with 4:2:0 chroma subsampling. The AT-HDVS-150-TX-PSK is identical to the AT-HDVS-150-TX, with the addition of local powering capability and an external power supply. This makes it ideal for extending AV and control directly to a projector with an HDBaseT input. The AT-HDVS-150-TX-PSK can serve as the central component of a small, automated AV system through automatic input selection, and by sending RS-232 control commands to the projector. With automatic display control capability, the AT-HDVS-150-TX-PSK can power the projector on or off whenever a source is connected or disconnected from the unit.

Package Contents

- 1 x AT-HDVS-150-TX
- 1 x 48V power supply
- 1 x Captive screw connector
3 pin: RS-232
- 1 x Pair of mounting brackets
- 1 x Installation Guide

Panel Description



1. DISPLAY ON/OFF button: Sends RS-232 trigger command when used with a compatible receiver (e.g. AT-UHD-CLSO-824 - see CLSO manual for instructions)

Note: If DISPLAY ON/OFF button is held for 5 seconds it will switch the baud rate between 115200 or 9600

2. INPUT SELECT button: Use to switch between VGA and HDMI source

3. HDMI 1: Connect first HDMI source here

4. HDMI 2: Connect second HDMI source here

5. VGA IN: Connect VGA source here

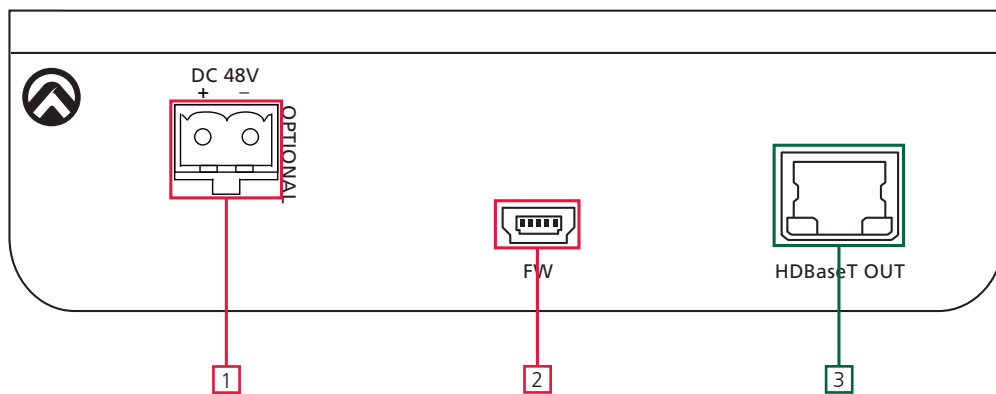
6. AUDIO IN: Connect analog audio here, only available with a VGA input

7. POWER LED: Will illuminate when receiving power

8. HDMI 1 LED: Lights up when HDMI input 1 is selected

9. HDMI 2 LED: Turns on when second HDMI input is selected

10. VGA LED: Illuminates when VGA input selected



1. DC 48V: Connect the included 48V DC power supply to this port when used with a projector or non-PoE device that does not supply power

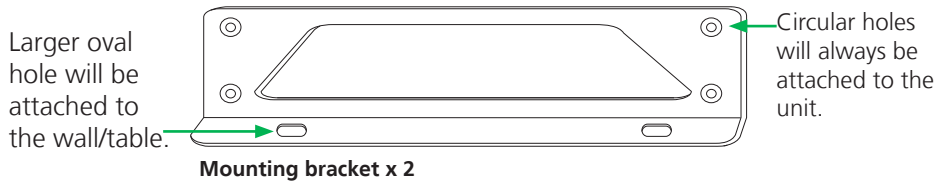
2. FIRMWARE: To update firmware, connect mini USB to USB A cable from this port to a Windows computer.

Note: Update instructions will be included with firmware download found on atlona.com

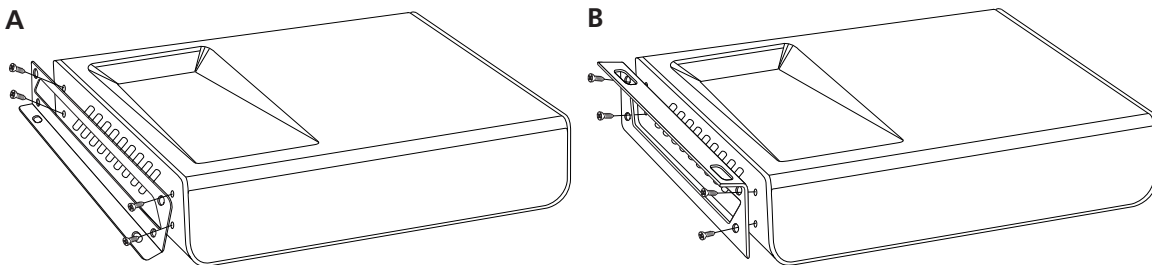
3. HDBaseT OUT: Connect category cable from there to a compatible receiver. (e.g. AT-UHD-CLSO-824)

Mounting

The HDVS-150-TX-PSK comes with mounting brackets that can be used to affix the unit to a table, desk, etc.



To affix the mounting brackets to the unit, use the four included screws. The bracket can be affixed with the oval holes pointing to the bottom (for against the wall - picture A) or the oval holes facing the top (for under tables - picture B).



Set Up

RS-232 control is available when used with appropriate power supply and HDBaseT receiver (AT-UHD-CLSO-824) with RS-232 capabilities.

The display on/off button can be used to transmit the following commands:

WP_Display[a]\$ [a] ? , On , Off Display On/Off control

To change inputs, the HDVS-TX should receive these commands:

WP_Input[a]\$ [a] ? , Hdmi , Vga Select input source

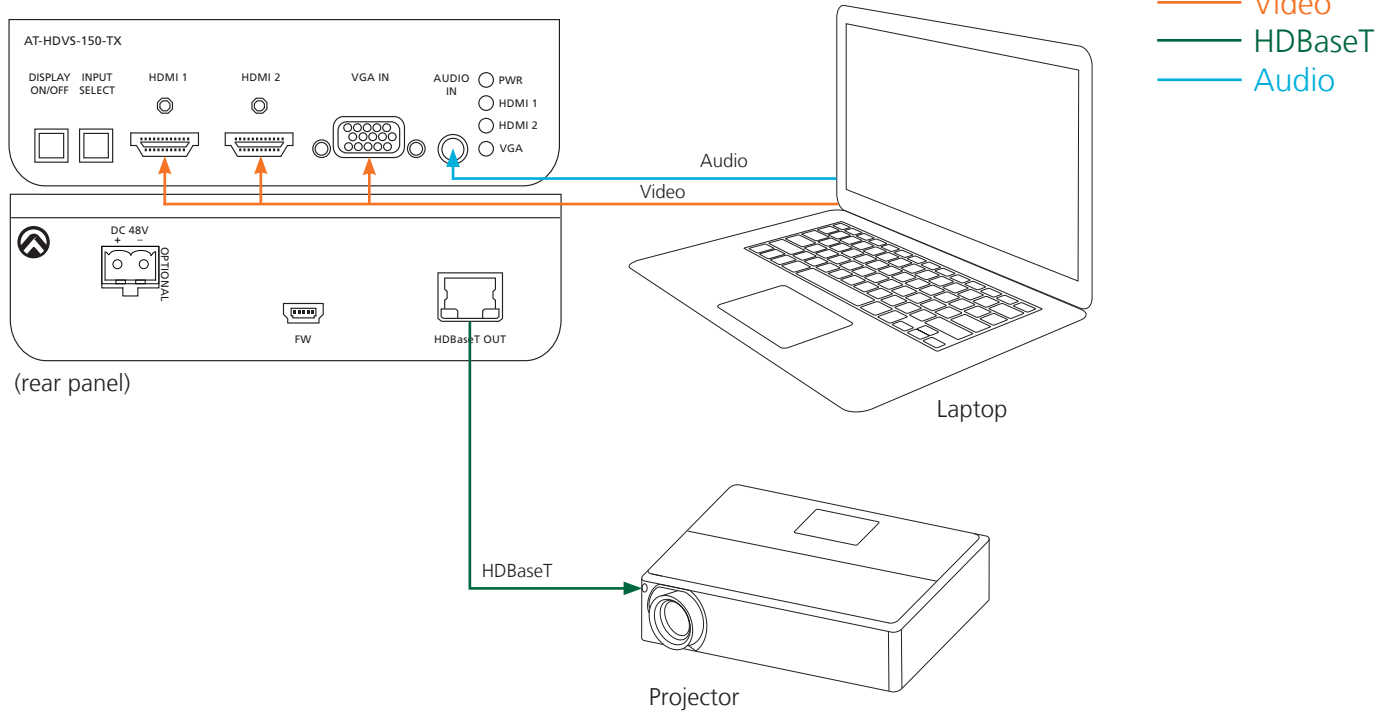
The port settings for the control device are:

115200 bps, 8 bit data length, No parity bit, 1 bit stop-bit, No flow control

Note: To set the port to 9600, press and hold the display on/off button

Note: Each command is terminated with a carriage return

Connection and Installation



Troubleshooting

1. Can I use this unit with an AT-HDVS-200-RX?

We do not recommend this combination, as this will result in limited functionality of both products and you will be unable to program settings into either one.

2. Can I use this unit with the AT-HDVS-150-RX?

Yes. Using this unit with an AT-HDVS-150-RX offers enhanced functionality, such as automatic display control through RS-232.

3. How do I program settings into this product?

Settings are programmed into the RX side, using the RX software (included in the AT-HDVS-150-RX firmware file, under "setup.exe").

4. How do I check the firmware version?

You can check the firmware version of the TX by accessing the On-Screen Display (OSD) on the RX side. Please note that you will need to have the TX and RX directly connected to each other via HDBaseT for this to work.

5. How do I update the firmware?

You can update the firmware through USB. Please note that you will need a USB A to Mini B cable.

6. Does this device have a webGUI?

No, this unit does not have a webGUI.

7. Is this unit compatible with AMS?

No, this unit is not compatible with AMS.

8. Does this unit support free-running analog audio?

No. Analog audio on the AT-HDVS-150-TX-PSK requires a VGA signal.