



ATLONA
Connecting technology to your world

User Manual

HDMI Recorder, Writer and Hot Plug Simulator with RS232 control AT-HDSync



TABLE OF CONTENTS

1. Introduction	2
2. Features	2
3. Package Contents	2
4. Specifications	3
5. Panel Description	4
6. Installation	5
7. Software Operation	6
8. Safety Information	9
9. Warranty	10
10. Atlona Product Registration	11

INTRODUCTION

Atlona Technologies AT-HDSync HDMI™ EDID Recorder-Writer with Serial Control is a device that can emulate the EDID (Extended Display Identification Data) information. It stores and recalls a default EDID setting in non-volatile memory and supports HDCP handshaking. ATHDSync allows your HDMI™ source boot directly from AT-HDSync, and users can detach HDMI™ monitor at any time while installing AT-HDSync between HDMI™ source and monitor. It can also read and store the EDID of your HDMI™ display and even let you modify the EDID and upload the modified EDID to displays.

Note: Extended Display Identification Data (EDID) is a standard data format that contains basic information about a monitor and its capabilities, including vendor information, maximum image size, color characteristics, factory pre-set timings, frequency range limits, and character strings for the monitor name and serial number.

The information is stored in the display and is used to communicate with the system through a Display Data Channel (DDC), which sits between the monitor and the PC graphics adapter. The system uses this information for configuration purposes, so the monitor and system can work together.

FEATURES

- HDMI 1.3c, DVI 1.0 and HDCP 1.1 compliant
- Built-in default EDID
- Able to read and store the EDID of monitors/projectors
- Prevent computers from deactivating inactive HDMI ports
- Able to write EDID into the AT-HDSync or the DVI monitors/projectors
- Maintain HDMI™ video resolution

PACKAGE CONTENTS

- 1x AT-HDSync unit
- 1x 5V DC power supply unit
- 1x User's manual

SPECIFICATIONS

Model Name	AT-HDSync	
Technical		
HDMI™ compliance	HDMI™ 1.3c	
DVI compliance	DVI 1.0	
HDCP compliance	Yes	
Video bandwidth	Yes	
Video support	Yes	
Input	1x HDMI™ + 1x RS-232	
Output	1x HDMI™	
HDMI™ connector	Type A (19-pin female)	
RS-232 connector	DE-9 (9-pin D-sub female)	
Flash EEPROM	256 byte (non-volatile)	
Mechanical		
Housing	Metal enclosure	
Dimensions [L x W x H]	Model	91 x 80 x 27mm (3.6" x 3.1" x 1.1")
	Package	270 x 175 x 80mm (10.6" x 6.9" x 3.2")
Weight	Model	240g (8.5oz)
Fixedness	Wall-mounting case with screws	
Power supply	5V DC	
Power consumption	4 Watt (max)	
Operation temperature	0~40°C (32~104°F)	
Storage temperature	-20~60°C (-4~140°F)	
Relative humidity	20~90% RH (no condensation)	



PANEL DESCRIPTION

Display Side



1. Connect to a 5V DC power supply unit.
2. Red light indicates the power on/off status. Green light indicates if the AT-HDSync is in the process of reading or writing EDID or sync detection.
3. Connect to a HDMI™ display.

Source and Control Side



1. Connect to a PC for RS-232 serial control to read/write EDIDs from/ to the display
2. Connect to a HDMI™ source device so the AT-HDSync will be the bridge between the HDMI™ source and display
3. Mode 0 = [Video] – supports up to HDMI 1.3 output. [Audio] – supports up to 7.1ch output
Mode 1 = [Video] – supports up to HDMI 1.3 output. [Audio] – lock to stereo audio output
Mode 2 = [Video] – locks to HDMI 1.2 output. [Audio] – supports up to 7.1ch output
Mode 3 = [Video] – locks to HDMI 1.2 output. [Audio] – lock to stereo audio output
Mode 4 = [Video] – DVI display mode. [Audio] – no audio output
Mode 5 = [Safe Mode] – uses default EDID with video supported up to 1080p
Mode 6 = [Recording Mode] – Learning EDID from HDMI output manually
Mode 7 = [Serial Control Mode] – Control the AT-HDSync by software via RS-232

INSTALLATION

I. Read the EDID manually from a HDMI™ monitor or projector

1. Connect the HDMI™ display device to the AT-HDSync via the DISPLAY port.
2. Plug in the 5V DC power supply unit.
3. Set AT-HDSync to MODE 6.
4. The EDID reading sequence is done when the green LED lights off.
5. Switch the rotary switch back to MODE 0-4 based on your system setting.
DO NOT let the rotary arrow pass by Mode 5 which will erase the EDID just learned and restore the default EDID.

II. Recall the default universal EDID

1. Set AT-HDSync to MODE 7.
2. Connect the HDMI™ display device to the AT-HDSync via the DISPLAY port.
3. Plug in the 5V DC power supply unit.
4. Connect the AT-HDSync to the serial port of PC and run the control software.
5. Click on "HDMI Monitor Reader" button to read the EDID information from the HDMI™ display.
6. The EDID reading sequence is done when the green LED lights off.

III. Write an EDID to a HDMI™ monitor or projector

1. Set AT-HDSync to MODE 7.
2. Connect the HDMI™ display device to the AT-HDSync via the DISPLAY port.
3. Plug in the 5V DC power supply unit.
4. Connect the AT-HDSync to the serial port of PC and run the control software.
5. Click on "HDMI Monitor Writer" button to write the EDID information to HDMI™ display.
6. The EDID reading sequence is done when the green LED lights off.

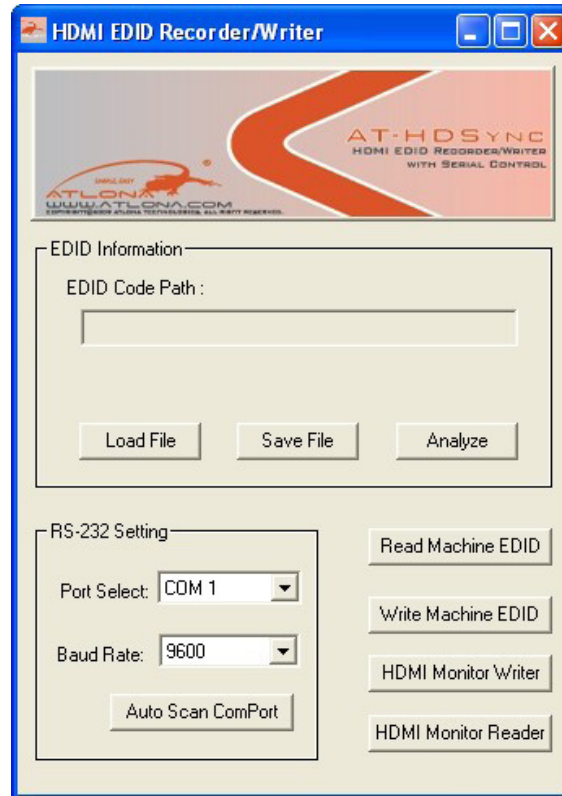
Note: The AT-HDSync may not work on the monitors with EDID write-protection.



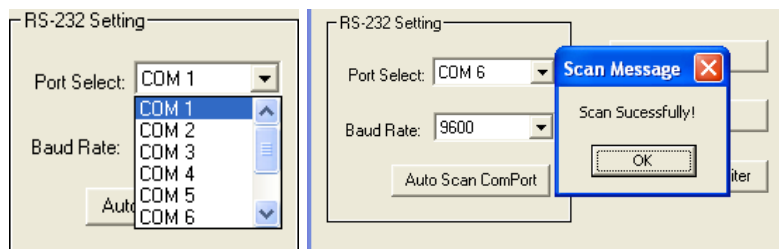
SOFTWARE OPERATION

Before running the software, please make sure the rotary switch is set to MODE 7.

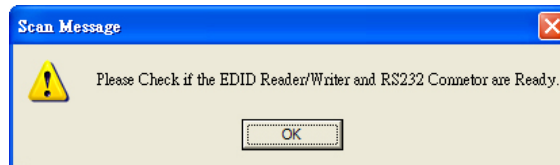
1) Getting started



1. Firstly, make sure of the correct setup, and click on **Auto Scan ComPort**. If the installation is done successfully, the following pop-up message window will show up to indicate the RS-232 serial port is automatically detected and successfully connected.



2. If the error message as shown below appears, inappropriate setup has occurred. Check at the power supply and RS-232 serial port connection.



2) Read EDID from AT-HDSync

1. If users would like to read EDID info from the AT-HDSync, simply click "Read Machine EDID."
You can see the following message to inform you the correct reading of the EDID has been done.



2. Click and make a quick analysis on the EDID information just read, which users are capable of monitoring or modifying.
3. To save the EDID information for your future reference, please click .
The pop-up window will guide you to save the EDID information within the PC.

3) Write EDID into AT-HDSync

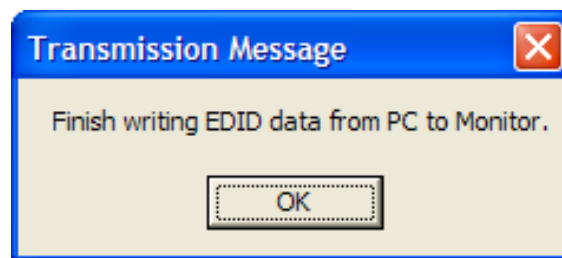
4. 1. You can modify EDID content in the pop-up window after you click "Analyze". You can also
5. load the previously saved EDID information in the analysis window by clicking "Load File".
6. 2. While you finish editing EDID content, you can click "Write Machine EDID" to write the EDID
7. profile to the AT-HDSync. After the writing action is completed, the following message
8. window will show up.



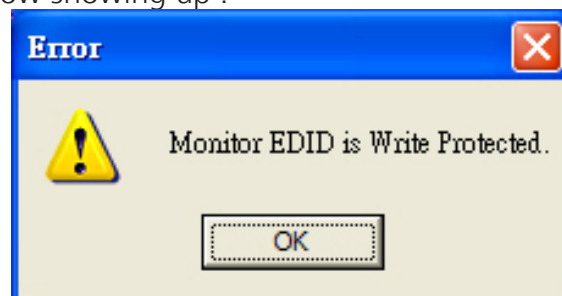
4) Write EDID into a HDMI™ monitor/projector

Executing “HDMI Monitor Writer” might cause damage to your monitor’s EDID. For instance, the sudden power surge or the disconnection of the serial port while updating EDID may result in an incomplete update process. Therefore, it is not recommended to use this function. If users would like to update the monitor’s EDID content and acknowledge such risk, please make a backup copy of the original EDID, and make sure there is no damage to your monitor’s EDID.

1. Click or click to load the pre-saved EDID profile in the analysis window.
2. Click “HDMI Monitor Writer” Click “HDMI Monitor Writer” and wait for the following message window showing up.



3. The AT-HDSync may not work on the monitors with EDID write-protection. At this time , you can see the following error message window showing up .



5) Read EDID from a HDMI™ monitor/projector

1. Click “HDMI Monitor Reader” and wait for the following message window showing up.



2. Click “Analyze” and make a quick analysis on the EDID information just read, which users are capable of monitoring or modifying.
3. To save the EDID information for your future reference, please click .

The pop-up window will guide you to save the EDID information within the PC.

Note: The AT-DVISync may not work on the monitors with EDID write-protection.

SAFETY INFORMATION

Safeguards



To reduce the risk of electric shock, do not expose this product to rain or moisture



Do not modify the wall plug. Doing so will void the warranty and safety features.



If the wall plug does not fit into your local power socket, hire an electrician to replace your obsolete socket.



This equipment should be installed near the socket outlet and the device should be easily accessible in the case it requires disconnection.

Precautions

FCC regulations state that any unauthorized changes or modifications to this equipment, not expressly approved by the manufacturer, could void the user's authority to operate this equipment.

Operate this product using only the included external power supply. Use of other power supplies could impair performance, damage the product, or cause fires.

In the event of an electrostatic discharge this device may automatically turn off. If this occurs, unplug the device and plug it back in.

Protect and route power cords so they will not be stepped on or pinched by anything placed on or against them. Be especially careful of plug-ins or cord exit points from this product.

Avoid excessive humidity, sudden temperature changes or temperature extremes.

Keep this product away from wet locations such as bathtubs, sinks, laundries, wet basements, fish tanks, and swimming pools.

Use only accessories recommended by Atlona to avoid fire, shock, or other hazards.

Unplug the product before cleaning. Use a damp cloth for cleaning and not cleaning fluid or aerosols. Such products could enter the unit and cause damage, fire, or electric shock. Some substances may also mar the finish of the product.

Never open, remove unit panels, or make any adjustments not described in this manual. Attempting to do so could expose you to dangerous electrical shock or other hazards. It may also cause damage to your AT-HDSync. Opening the product will void the warranty.

Do not attempt to service the unit. Disconnect the product and contact your authorized Atlona reseller or contact Atlona directly.

WARRANTY

Limited Warranty

Atlona Technologies warrants that (a) its products (the AT-HDSync) will perform substantially in accordance with the accompanying written materials for a period of 3 years from the date of receipt and (b) that the product will be free from defects in materials and workmanship under normal use and service for a period of 3 years. In the event applicable law imposes any implied warranties, the implied warranty period is limited to 3 years from the date of receipt. Some jurisdictions do not allow such limitations on duration of an implied warranty, so the above limitation may not apply to customers that fall within those areas.

Customer Remedies

Atlona Technologies' and its suppliers' entire liability and Customer's exclusive remedy shall be, at Atlona Technologies' decision, either return of the price paid for the product, repair, or replacement of the product that does not meet this Limited Warranty and which is returned to Atlona Technologies with a copy of the Customer's receipt. This Limited Warranty is void if failure of the product has resulted from accident, abuse, misapplication, or natural occurrence. In example but not limited to: power surges (electrical storms, local power outage), dropping the product (or items on the product), contact with fluids, and physical misconduct (i.e. kicking or punching). Any replacement product will be warranted for the remainder of the original warranty period.

No other warranties

To the maximum extent permitted by applicable law, Atlona Technologies and its suppliers disclaim all other warranties, either expressed or implied, including, but not limited to, implied warranties of merchantability and fitness for a particular purpose, with regard to the product and any related written materials. This Limited Warranty gives customer specific legal rights. Customers may have other rights depending on the jurisdiction.

No liability for damages

To the maximum extent permitted by applicable law, in no event shall Atlona Technologies or its suppliers be liable for any damages arising out of the use of or inability to use this product, even if Atlona Technologies has been advised of the possibility of such damages. Such damages include but are not limited to: special, incidental, consequential, or indirect damages for personal injury, loss of business profits, business interruption, loss of business information, or any other pecuniary loss. Atlona Technologies' and its suppliers' entire liability under any provision of this agreement shall be limited to the amount actually paid by you for the product. Some Jurisdictions do not allow the exclusion or limitation of liability for consequential or incidental damage. The above limitations may not apply to you in such jurisdictional cases.

ATLONA PRODUCT REGISTRATION

Thank you for purchasing this Atlona product. - We hope you enjoy it and will take an extra few moments to register your new purchase.

Registration creates an ownership record if your product is lost or stolen and helps ensure you'll receive notification of performance issues and firmware updates.

At Atlona, we respect and protect your privacy, assuring you that your registration information is completely secure. Atlona product registration is completely voluntary and failure to register will not diminish your limited warranty rights.

To register go to: <http://www.atlona.com/registration>