

# Firmware Update ~ AT-UHD-SW-51

The UHD switchers can be updated through webGUI and USB.

Needed items (webGUI):

- New firmware - Downloaded from either atlona.com or through a box.com link sent by a Technical Support representative
- IP address of the Switcher
- Computer on the same network as the Switcher
- Username and password to access the webGUI of the Switcher

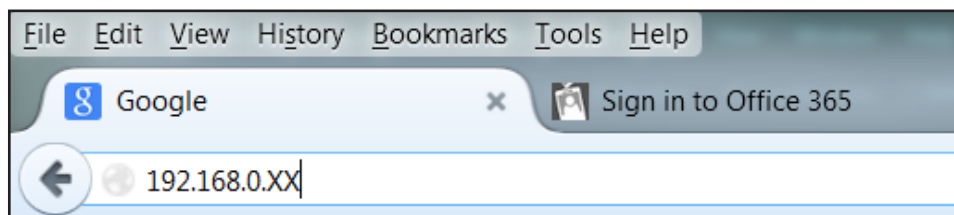
Needed items (USB):

- New firmware - Downloaded from either atlona.com or through a box.com link sent by a Technical Support representative
- Mini USB to USB A cable
- Computer with a USB port
- Switcher and included power supply

## Updating (webGUI)

- Plug a LAN cable into the switcher and your network router (if not already connected to the network)
- Type the IP address of the switcher into a web browser (as seen below)

**Note:** Computer must be on the same network as the switcher to access through IP



**Important:** If any stability issues are experienced, disable any anti-virus or firewall that may be interfering with network communication to the switcher. Once set up is done and the webGUI is no longer being used, the firewall and anti-virus can be re-enabled.



### Admin Login

User name	<input type="text" value="root"/>
Password	<input type="password" value="....."/>
<input type="button" value="Login"/>	<input type="button" value="clear"/>

A login screen will appear (this is the same log in for admin and general users).

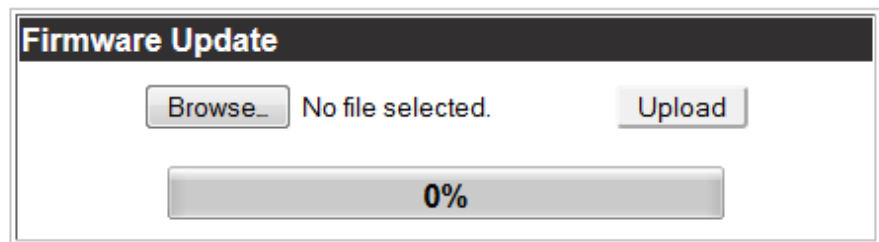
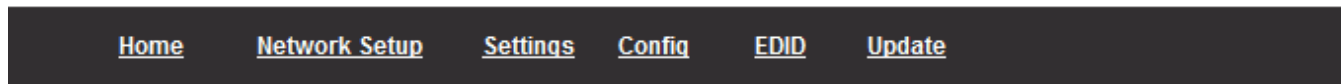
- Login using the username and password (this would have been set up during installation)

Once logged in:

- Select the link named 'Update'



## AT-UHD-SW-51 Update



- Select the browse button under Firmware Update
- Select the new firmware file that was downloaded either from atlona.com or box.com
- Press the update button

A progress bar will display as the update is completed. After the update is complete, if a restart is required, the webGUI will display a prompt. The firmware update is now complete and the switcher is ready to be used.

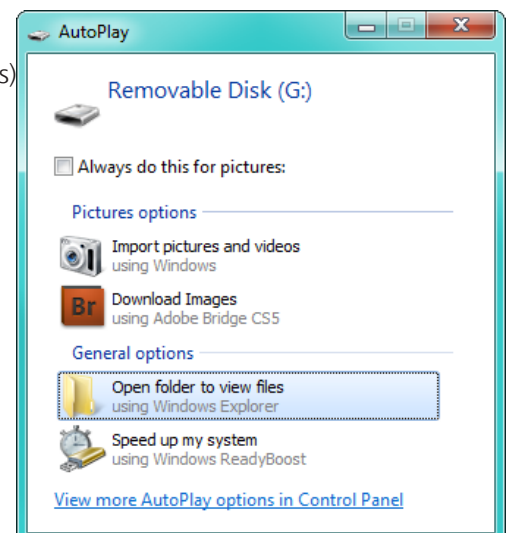
## Updating (USB)

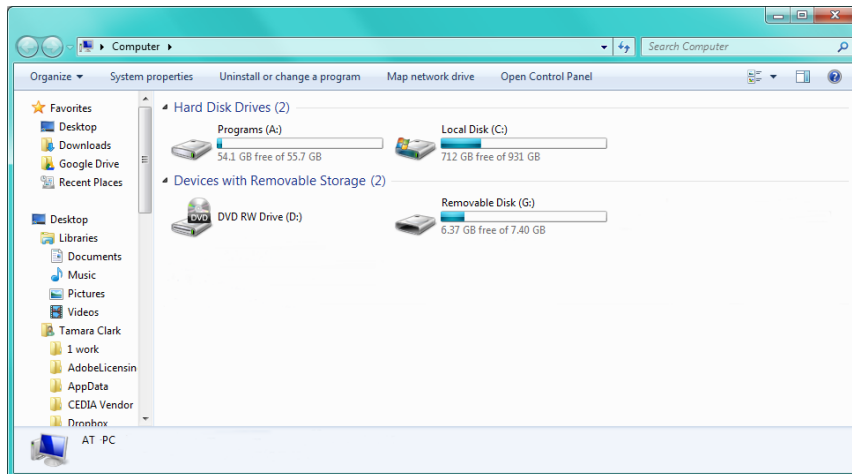
Putting the unit into update mode:

- Unplug the power from the UHD-SW
- Connect UHD-SW to a computer using the mini USB to USB A cable
- Press and hold the input key
- Plug the power back into the UHD-SW (while still holding the input key)
- Continue holding the input key for 5 seconds then release it

Updating

- Click the option, "Open folder to view files" (if AutoPlay runs)





If the computer does not auto detect the connection, open "My Computer" and select the USB drive.

- Place the latest firmware in the folder (if there is already a file in the folder, delete it)
- Remove the USB cable from the UHD-SW and computer
- Unplug the power cable from the UHD-SW
- Plug the power cable back in

The update process is complete and the switcher is ready to be used