

Update Instructions

The CLSO 824 can be updated through webGUI and USB.

Needed items (webGUI):


- New firmware - Downloaded from either atlona.com or through a box.com link sent by a Technical Support representative
- IP address of the Switcher
- Computer on the same network as the Switcher
- Username and password to access the webGUI of the Switcher

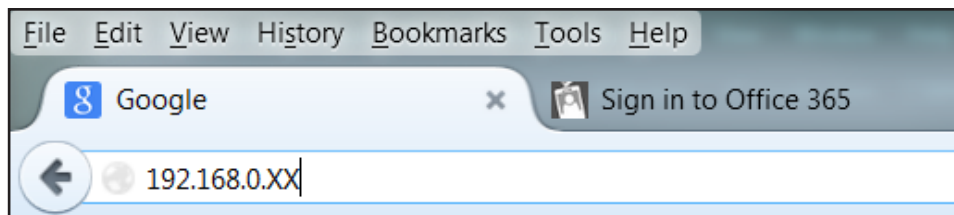
Needed items (USB):

- New firmware - Downloaded from atlona.com
- Mini USB to USB A cable
- Computer with a USB port and Windows 7 (USB update will not work with any other OS)
- Switcher and included power supply

Updating (webGUI)

1. Plug a LAN cable into the switcher and your network router (if not already connected to the network)
2. Type the IP address of the switcher into a web browser (as seen below)

 **NOTE:** Computer must be on the same network as the switcher to access through IP



IMPORTANT: If any stability issues are experienced, disable any anti-virus or firewall that may be interfering with network communication to the switcher. Once set up is done and the webGUI is no longer being used, the firewall and anti-virus can be re-enabled.



ATLONA

Technical Support: US: 1 (877) 536-3976 International: 1 (408) 962-0515

Admin Login

User name

root

Password

•••••

Login


clear

A login screen will appear (this is the same log in for admin and general users).

3. Login using the username and password (this would have been set up during installation)

Once logged in:

4. Select the link named 'Update'

**ATLONA**
Connecting Technology

AT-UHD-CLSO-824
Update

[Home](#) [Network Setup](#) [Settings](#) [Config](#) [EDID](#) [Audio](#) [HDVS](#) [Update](#)

Firmware Update

Browse...

No file selected.

Upload

0%

Audio Update

Browse...

No file selected.

Upload

0%

FPGA Update

Browse...

No file selected.

Upload

0%

Valens Update

Browse...

No file selected.

Upload

0%

The firmware page displays the switcher, HDBaseT transmitter chips, and HDBaseT receivers firmware versions to make it easier to see what needs to be updated.

5. Select the browse button for the type of firmware to be updated

- Firmware Update - MCU/Main firmware
- Audio Update - DSP firmware
- FPGA Update - FPGA firmware
- Valens Update - Valens firmware

6. Select the new firmware file that was downloaded either from atlona.com or box.com

7. Press the update button

A progress bar will display as the update is completed. After the update is complete, if a restart is required, the webGUI will display a prompt. The firmware update is now complete and the switcher is ready to be used.

Updating (USB)

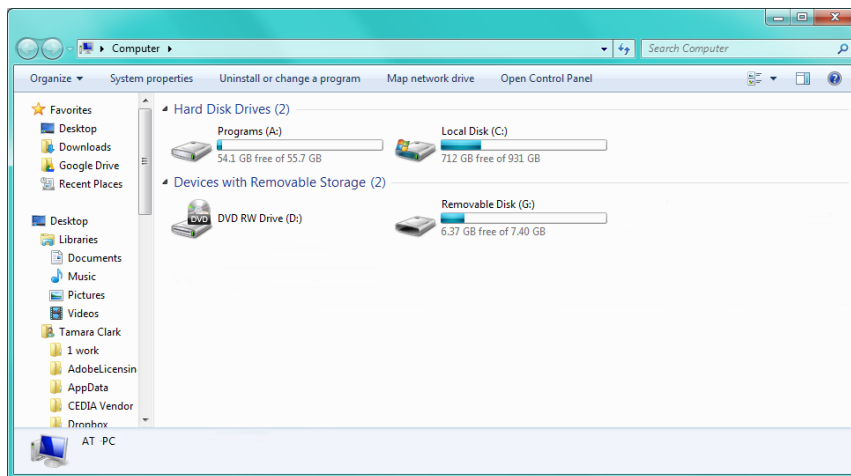
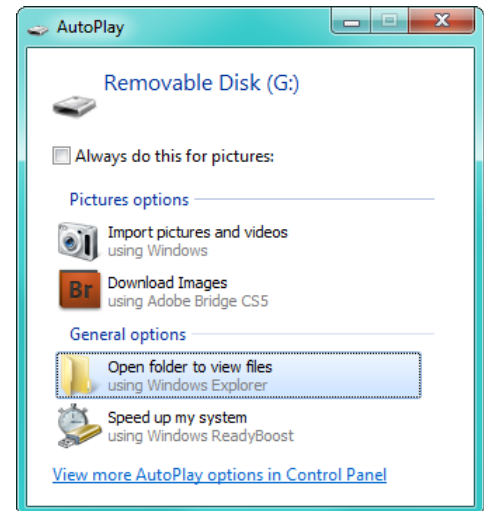
NOTE: Update can only be done with a computer running Windows 7

Putting the unit into update mode:

1. Unplug the power from the CLSO-824
2. Connect CLSO-824 to a computer using the mini USB to USB A cable
3. Press and hold the input key of the specific type of firmware update
 - Input 1 - MCU/main firmware
 - Input 3 - DSP firmware
 - Input 4 - FPGA firmware
 - Input 5 - TX (Valens HDBaseT output)
 - Input 6 - RX (Valens HDBaseT input)
4. Plug the power back into the CLSO-824 (while still holding the input key)
5. Continue holding the input key for 5 seconds then release it

Updating

6. Click the option, "Open folder to view files" (if AutoPlay runs)



NOTE: If the computer does not auto detect the connection, open "My Computer" and select the USB drive.

7. Place the latest firmware in the folder (if there is already a file in the folder, delete it)
8. Remove the USB cable from the CLSO-824 and computer
9. Unplug the power cable from the CLSO-824
10. Plug the power cable back in
11. Repeat the process until all firmwares are updated

The update process is complete and the switcher is ready to be used