

# Firmware Update ~ AT-UHD-CLSO-824

The CLSO 824 can be updated through webGUI and USB.

Needed items (webGUI):

- New firmware - Downloaded from either atlona.com or through a box.com link sent by a Technical Support representative
- IP address of the Switcher
- Computer on the same network as the Switcher
- Username and password to access the webGUI of the Switcher

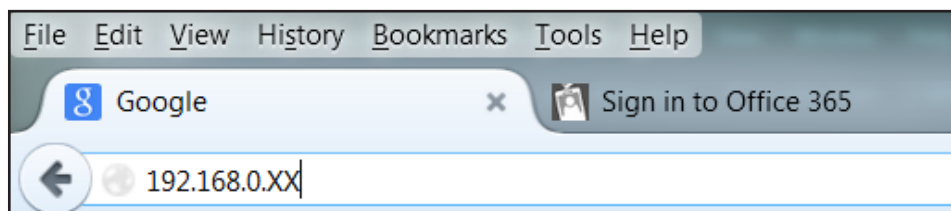
Needed items (USB):

- New firmware - Downloaded from atlona.com
- Mini USB to USB A cable
- Computer with a USB port and Windows 7 (USB update will not work with any other OS)
- Switcher and included power supply

## Updating (webGUI)

- Plug a LAN cable into the switcher and your network router (if not already connected to the network)
- Type the IP address of the switcher into a web browser (as seen below)

**Note:** Computer must be on the same network as the switcher to access through IP



**Important:** If any stability issues are experienced, disable any anti-virus or firewall that may be interfering with network communication to the switcher. Once set up is done and the webGUI is no longer being used, the firewall and anti-virus can be re-enabled.



### Admin Login


User name	<input type="text" value="root"/>
Password	<input type="password" value="....."/>
<input type="button" value="Login"/> <input type="button" value="clear"/>	

A login screen will appear (this is the same log in for admin and general users).

- Login using the username and password (this would have been set up during installation)

Once logged in:

- Select the link named 'Update'

 **ATLONA**  
Connecting Technology

**AT-UHD-CLSO-824**  
**Update**

[Home](#) [Network Setup](#) [Settings](#) [Config](#) [EDID](#) [Audio](#) [HDVS](#) [Update](#)

**Firmware Update**  
 No file selected.   

0%

**Audio Update**  
 No file selected.   

0%

**FPGA Update**  
 No file selected.   

0%

**Valens Update**  
 No file selected.   

0%

The firmware page displays the switcher, HDBaseT transmitter chips, and HDBaseT receivers firmware versions to make it easier to see what needs to be updated.

- Select the browse button for the type of firmware to be updated
  - Firmware Update - MCU/Main firmware
  - Audio Update - DSP firmware
  - FPGA Update - FPGA firmware
  - Valens Update - Valens firmware
- Select the new firmware file that was downloaded either from [atlona.com](http://atlona.com) or [box.com](http://box.com)
- Press the update button

A progress bar will display as the update is completed. After the update is complete, if a restart is required, the webGUI will display a prompt. The firmware update is now complete and the switcher is ready to be used.

## Updating (USB)

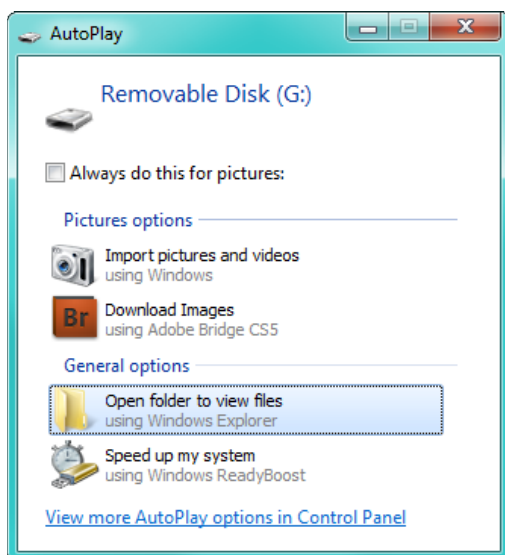
**Note:** Update can only be done with a computer running Windows 7

Putting the unit into update mode:

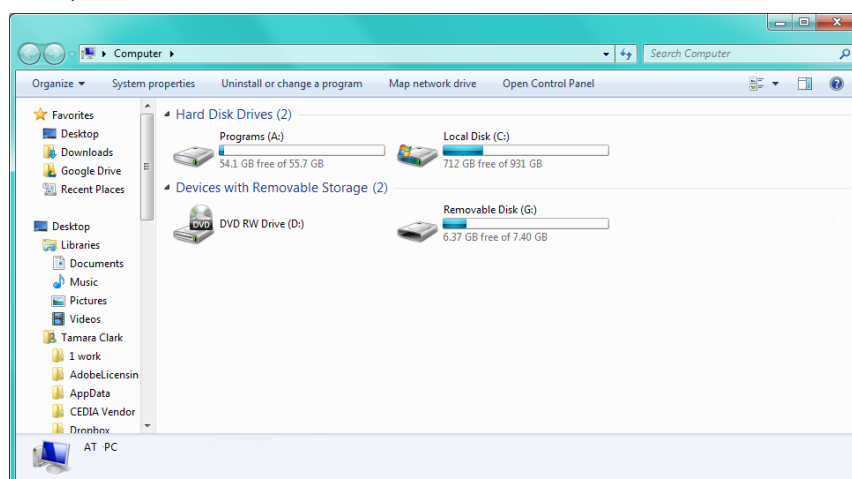
- Unplug the power from the CLSO-824
- Connect CLSO-824 to a computer using the mini USB to USB A cable
- Press and hold the input key of the specific type of firmware update
  - Input 1 - MCU/main firmware
  - Input 3 - DSP firmware
  - Input 4 - FPGA firmware
  - Input 5 - TX (Valens HDBaseT output)
  - Input 6 - RX (Valens HDBaseT input)
- Plug the power back into the CLSO-824 (while still holding the input key)
- Continue holding the input key for 5 seconds then release it

Updating:

- Click the option, "Open folder to view files" (if AutoPlay runs)



If the computer does not auto detect the connection, open "My Computer" and select the USB drive.



- Place the latest firmware in the folder (if there is already a file in the folder, delete it)
- Remove the USB cable from the CLSO-824 and computer
- Unplug the power cable from the CLSO-824
- Plug the power cable back in
- Repeat the process until all firmwares are updated

The update process is complete and the switcher is ready to be used