

Update Instructions

The CLSO 601 can be updated through webGUI and USB.

Needed items (webGUI):

- New firmware - Downloaded from either atlona.com or through a box.com link sent by a Technical Support representative
- IP address of the Switcher
- Computer on the same network as the Switcher
- Username and password to access the webGUI of the Switcher

Needed items (USB):

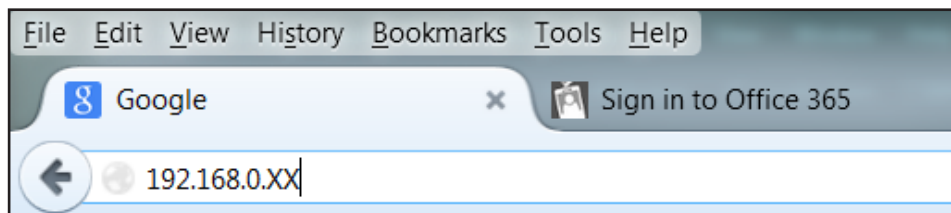
- New firmware - Downloaded from either atlona.com or through a box.com link sent by a Technical Support representative
- Mini USB to USB A cable
- Computer with a USB port
- Switcher and included power supply

Updating (webGUI)

1. Plug a LAN cable into the switcher and your network router (if not already connected to the network)
2. Type the IP address of the switcher into a web browser (as seen below)



NOTE: Computer must be on the same network as the switcher to access through IP



IMPORTANT: If any stability issues are experienced, disable any anti-virus or firewall that may be interfering with network communication to the switcher. Once set up is done and the webGUI is no longer being used, the firewall and anti-virus can be re-enabled.



The screenshot shows the Atlona webGUI login interface. At the top is the Atlona logo and technical support contact information: US: 1 (877) 536-3976, International: 1 (408) 962-0515. Below this is a section titled "Admin Login" with a black background. Underneath, there are two input fields: "User name" with the text "root" entered, and "Password" with masked characters (dots). At the bottom of the login section are two buttons: "Login" and "clear".

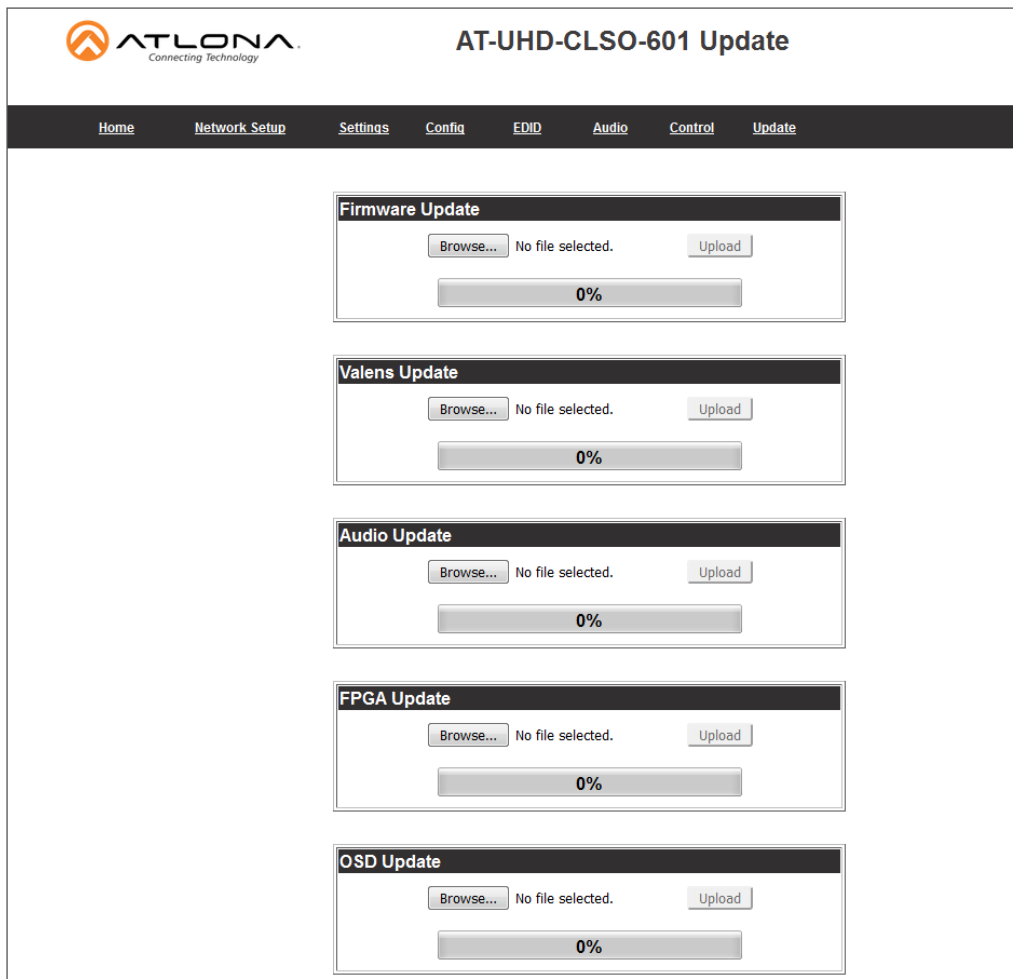
A login screen will appear (this is the same log in for admin and general users).

3. Login using the username and password (this would have been set up during installation)

Update Instructions

Once logged in:

4. Select the link named 'Update'



The screenshot shows the 'AT-UHD-CLSO-601 Update' web interface. At the top, there is a navigation bar with links: Home, Network Setup, Settings, Config, EDID, Audio, Control, and Update. Below the navigation bar, there are five update sections, each with a 'Browse...' button, a status indicator 'No file selected.', an 'Upload' button, and a progress bar showing 0%.

- Firmware Update**
- Valens Update**
- Audio Update**
- FPGA Update**
- OSD Update**

The firmware page provides an area to update the switcher, Valens, audio, FPGA, and OSD firmwares.

5. Select the browse button for the type of firmware to be updated

- Firmware Update - MCU/Main firmware
- Valens Update - Valens firmware
- Audio Update - DSP firmware
- FPGA Update - FPGA firmware
- OSD Update - OSD firmware

6. Select the new firmware file that was downloaded either from atlona.com or box.com

7. Press the update button

A progress bar will display as the update is completed. After the update is complete, if a restart is required, the web-GUI will display a prompt. The firmware update is now complete and the switcher is ready to be used.

Update Instructions

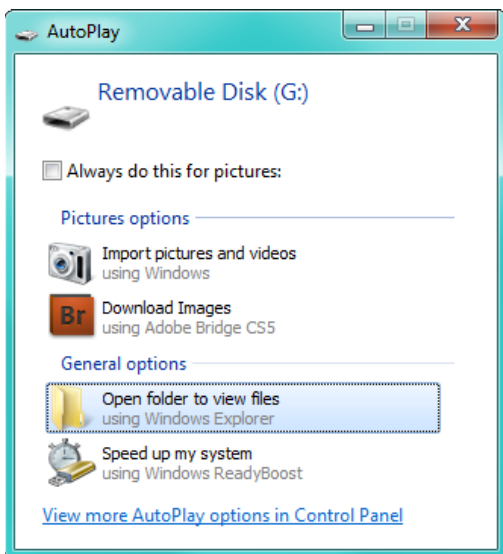
Updating (USB)

Putting the unit into update mode:

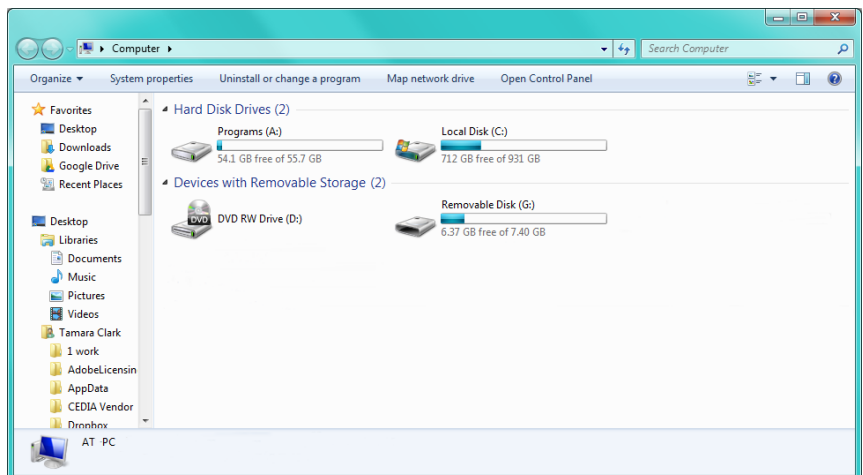
1. Unplug the power from the CLSO-601
2. Connect CLSO-601 to a computer using the mini USB to USB A cable
3. Press and hold the input key of the specific type of firmware update
 - Input 1 - USB/main firmware
 - Input 2 - OSD firmware
 - Input 3 - DSP/Audio firmware
 - Input 4 - FPGA firmware
 - Input 5 - Valens firmware
4. Plug the power back into the CLSO-601 (while still holding the input key)
5. Continue holding the input key for 5 seconds then release it

Updating

6. Click the option, "open folder to view files" (if AutoPlay runs)



If the computer does not auto detect the connection, open "My Computer" and select the USB drive.



7. Place the latest firmware in the folder (if there is already a file in the folder, delete it)
8. Remove the USB cable from the CLSO-601 and computer
9. Unplug the power cable from the CLSO-601
10. Plug the power cable back in
11. Repeat the process until all firmwares are updated

The update process is complete and the switcher is ready to be used Unplug the power from the CLSO-601