

# Update Instructions

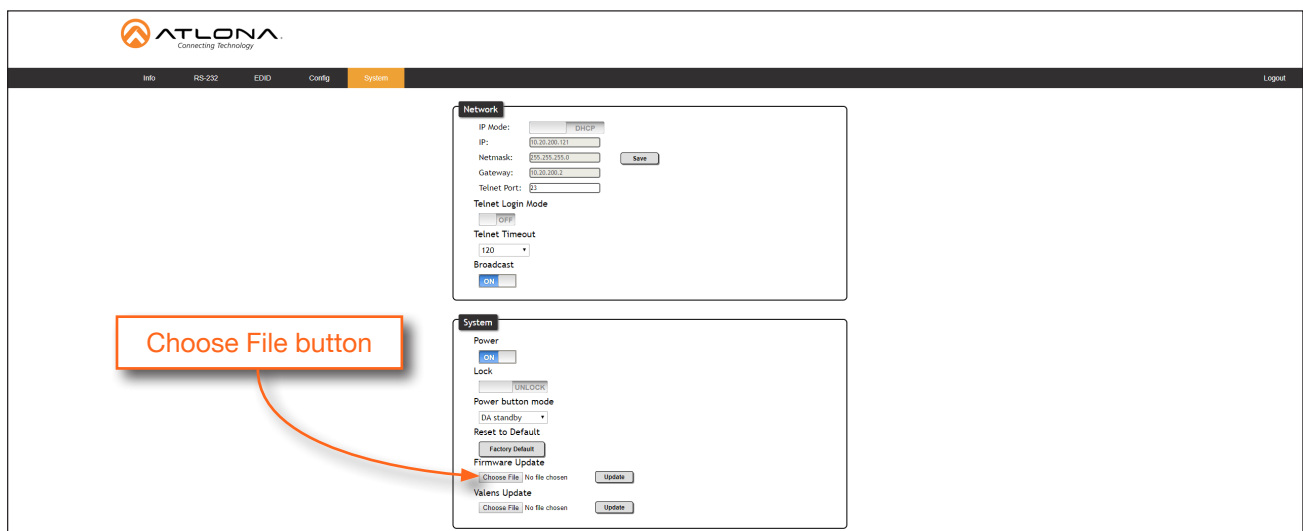
Updating the firmware can be completed using either the USB interface or the web GUI. Atlona recommends using the web GUI for updating the firmware. However, if a network connection is not available, the AT-UHD-CAT-4ED firmware can be updated using a USB-A to USB mini-B cable.

## Using the Web GUI

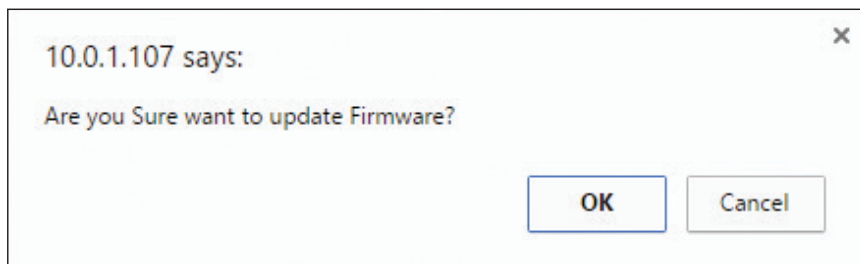
Requirements:

- AT-UHD-CAT-4ED
- Firmware file
- Computer running Microsoft Windows

1. Connect an Ethernet cable from the computer, containing the firmware, to the same network where the AT-UHD-CAT-4ED is connected.
2. Go to the **System** page (page 37) in the web GUI.



3. Click the **Choose File** button, under **Firmware Update**.
4. Browse to the location of the firmware file, select it, and click the **Open** button.
5. Click the **Update** button to begin the update process.
6. The following message box will be displayed.



7. Click the **OK** button to begin the firmware update process. Click the **Cancel** button to cancel the process.
8. After the firmware update process is complete, the **Login** screen will be displayed, indicating that the update process is complete.

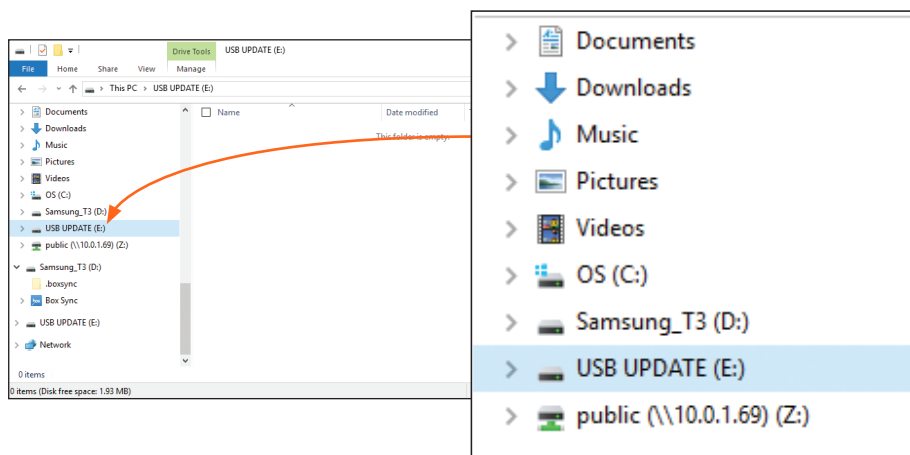
### Using USB

Required items:

- AT-UHD-CAT-4ED
- Computer containing the firmware file.
- USB-A to USB mini-B cable

1. Disconnect power from the AT-UHD-CAT-4ED.
2. Press and hold the **INPUT** button while connecting power to the AT-UHD-CAT-4ED.
3. Release the INPUT button. The **POWER** button will glow solid red, indicating that the AT-UHD-CAT-4ED is in update mode.
4. Connect the USB-A to USB mini-B cable between the PC and the firmware port on the AT-UHD-CAT-4ED.
5. The USB UPDATE folder will be displayed.

If this folder is not displayed, automatically, select the USB UPDATE drive from Windows Explorer.



7. Delete all files from the USB UPDATE drive, if any are present.
8. Drag-and-drop the firmware file to the drive. During the firmware update procedure, the **POWER** button will flash.
9. After the file has been copied, disconnect the USB cable from both the computer and the AT-UHD-CAT-4ED.
10. The firmware update process is complete.