

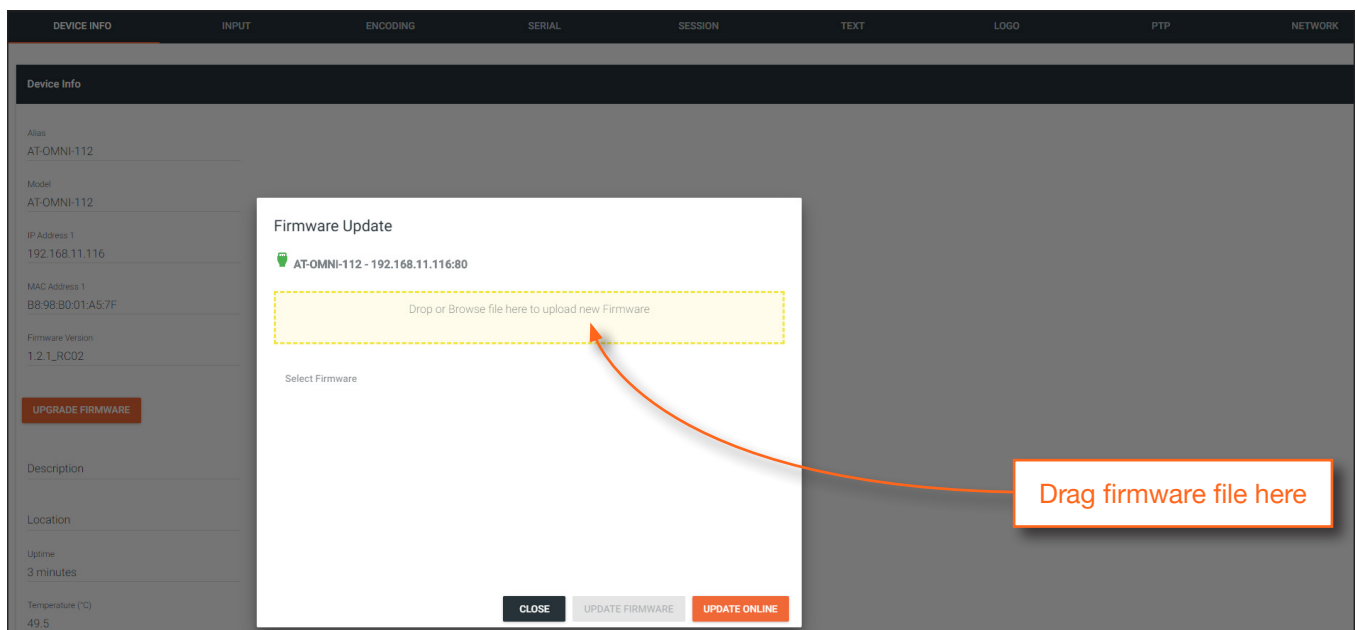
Update Instructions



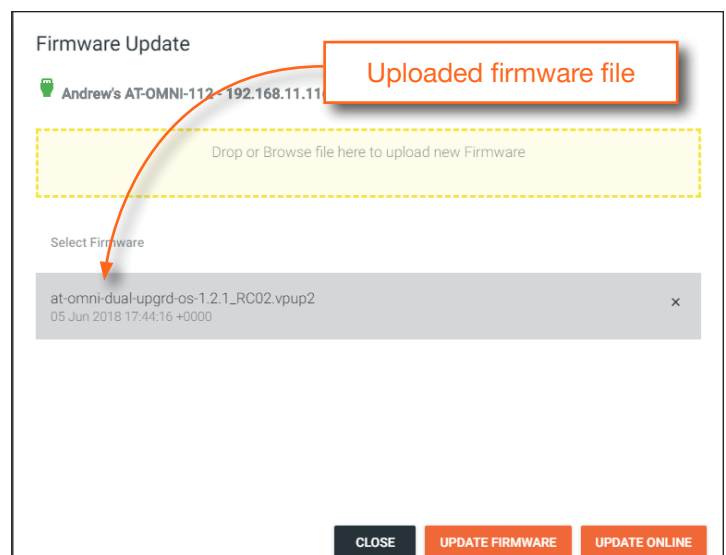
IMPORTANT:

- If updating to 1.2.1 from version 1.0, OmniStream units must first be updated to version 1.1. Note that this does *not* apply to OmniStream R-Type units. Version 1.1 firmware is included as part of the 1.2.1 firmware download and can be used to update a unit that is running 1.0.
- When updating the firmware, make sure that the unit does not lose power. The firmware update process should take approximately 1 to 2 minutes.
- For full functionality of OMNI 1.2.1, Velocity must be running at least 1.4.5 and AMS must be on firmware version 2.0.12 and above.

1. Login to the Atlona Management System (AMS). Refer to the *OmniStream User Manuals* if necessary.
2. Click **DEVICE INFO** in the menu bar.
3. Click the **UPDATE FIRMWARE** button to display the **Firmware Update** dialog.

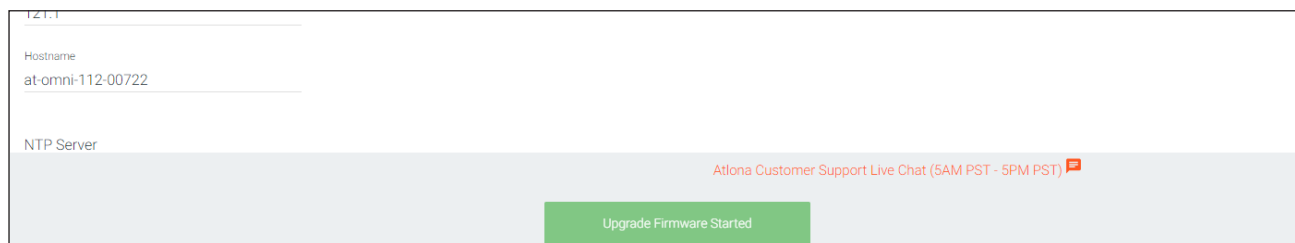


4. Click and drag the firmware file to yellow box, to upload the firmware to the device. Once the firmware file has been uploaded, it will appear under the **Select Firmware** section of the dialog box.
5. Click the **UPDATE FIRMWARE** button to begin the update process.
6. Click and drag the firmware file to yellow box, to upload the firmware to the device. OmniStream firmware files use the .v2pup file extension. Once the firmware file has been uploaded, it will appear under the **Select Firmware** section of the dialog box.

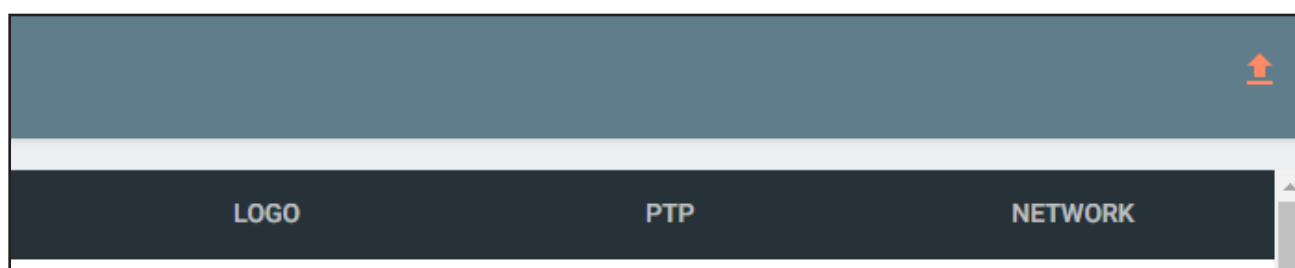


Update Instructions

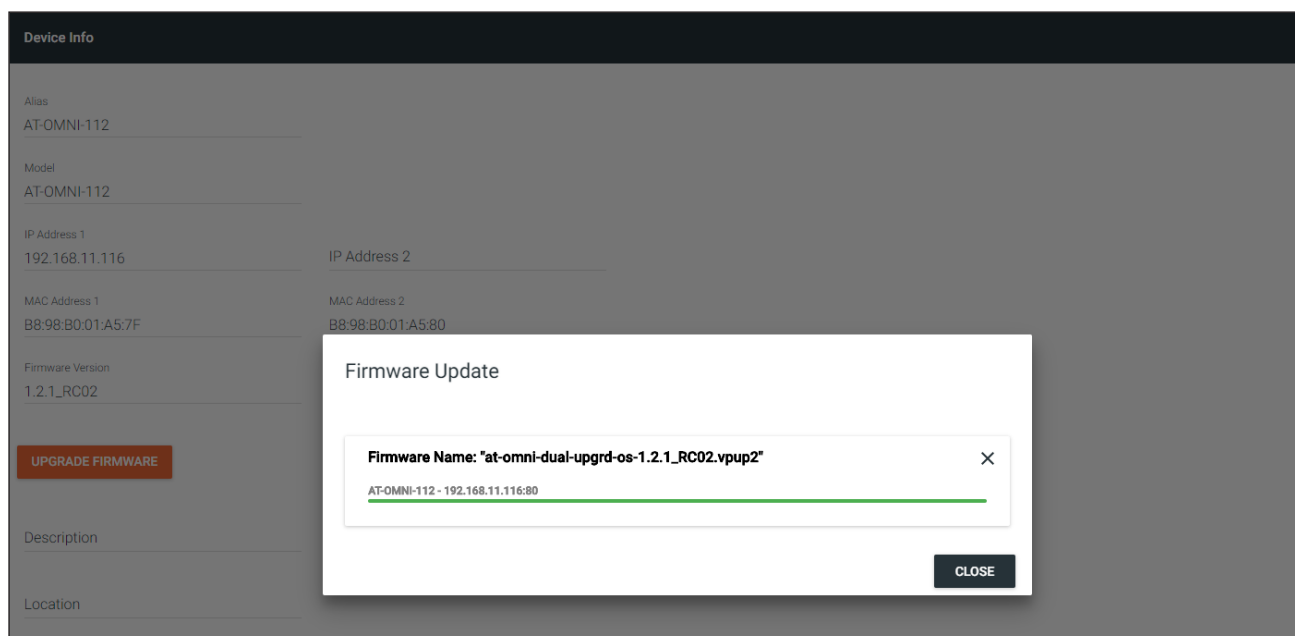
- Click on the firmware file name to highlight it.
- Click the **UPDATE FIRMWARE** button, at the bottom of the dialog box, to begin the update process. After the **UPDATE FIRMWARE** button is clicked, the Upgrade Firmware Started message box will be displayed.



- Click the orange up-arrow icon, in the upper-right corner of the screen, as shown below. If this icon is orange, it indicates that a firmware update is in progress.



The progress bar for the update process will be displayed. The update process should take a few seconds.



- Click the "X" to close out the progress bar window, then click the **CLOSE** button to dismiss the **Firmware Update** message box.
- The firmware update process is complete.
- Clear the web browser cache and refresh the web page. The new firmware version will appear in the **Firmware Version** field, in the **DEVICE INFO** page.