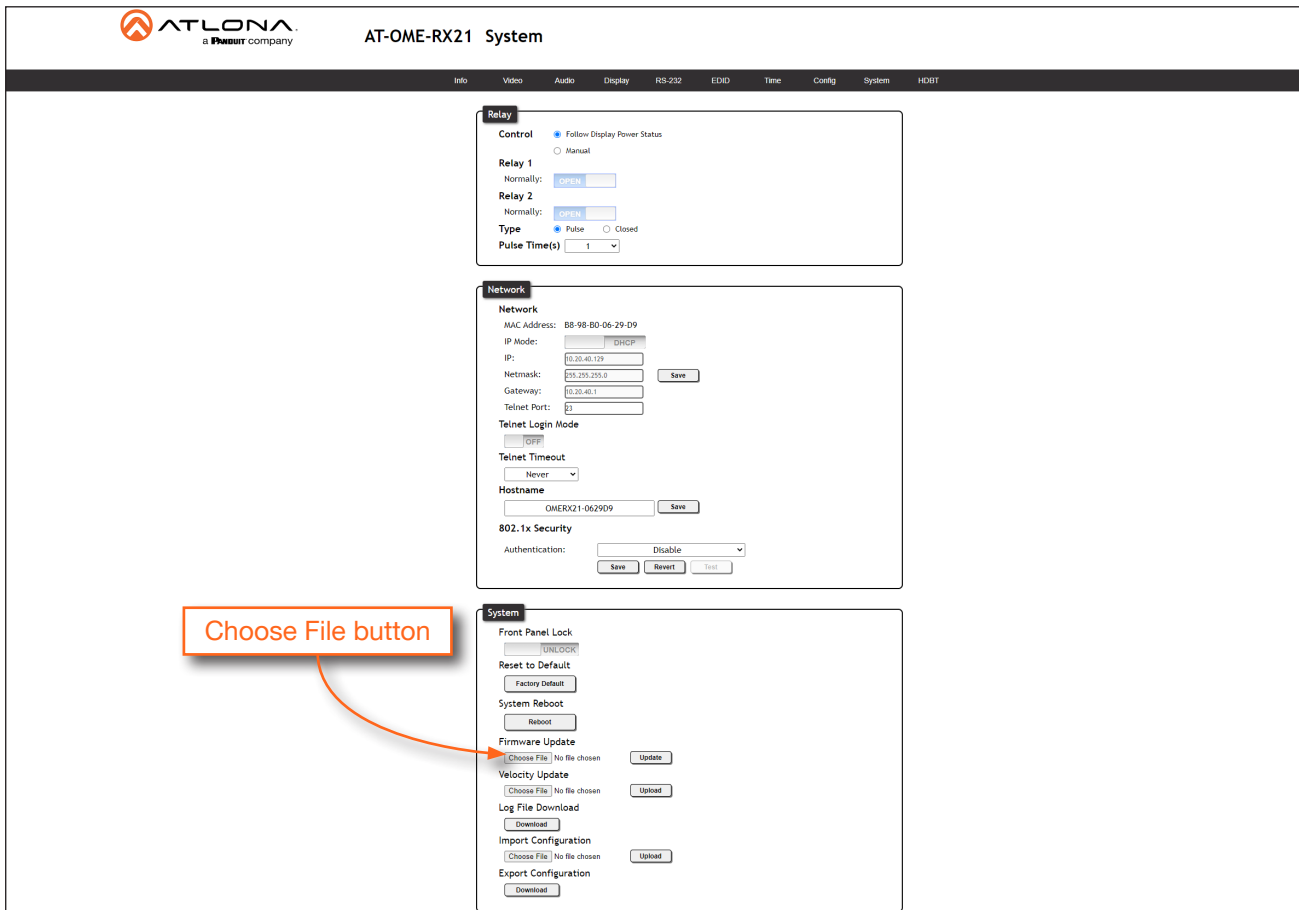


Update Instructions

Updating the firmware is performed using the built-in web server. Refer to the instructions below.

Requirements:

- AT-OME-RX21
 - Firmware file
 - Computer running Microsoft Windows
1. Connect an Ethernet cable from the computer, containing the firmware, to the same network where the AT-OME-RX21 is connected.
 2. Go to the **System** page in the web server.



The screenshot shows the AT-OME-RX21 System web interface. The top navigation bar includes links for Info, Video, Audio, Display, RS-232, EDID, Time, Config, System, and HDBT. The main content area is divided into three sections: Relay, Network, and System. The System section is currently active and contains options for Front Panel Lock, Reset to Default, System Reboot, Firmware Update, Velocity Update, Log File Download, Import Configuration, and Export Configuration. An orange callout box with the text "Choose File button" has an arrow pointing to the "Choose File" button in the Firmware Update section.

Relay

Control

☒ Follow Display Power Status

☐ Manual

Relay 1

Normally:

Relay 2

Normally:

Type

☒ Pulse ☐ Closed

Pulse Time(s)

Network

Network

MAC Address: BB-98-B0-06-29-D9

IP Mode:

IP:

Netmask:

Gateway:

Telnet Port:

Telnet Login Mode

Telnet Timeout

Hostname

802.1x Security

Authentication:

System

Front Panel Lock

Reset to Default

System Reboot

Firmware Update

No file chosen

Velocity Update

No file chosen

Log File Download

Import Configuration

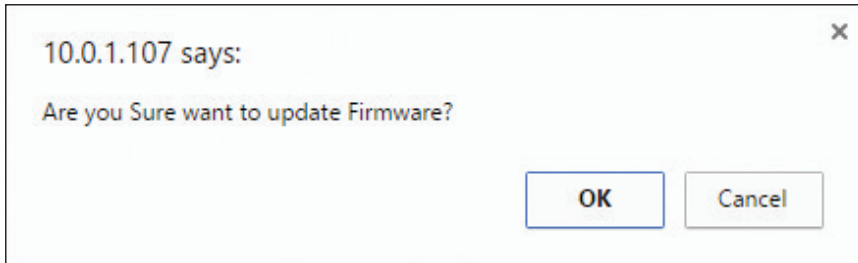
No file chosen

Export Configuration

3. Click the **Choose File** button, under **Firmware Update**.
4. Browse to the location of the firmware file, select it, and click the **Open** button.
5. Click the **Update** button, under the **Firmware Update** section.

Update Instructions

6. The following message box will be displayed.



7. Click the **OK** button to begin the firmware update process. Click the **Cancel** button to cancel the process.
8. After the firmware update process is complete, the **Login** screen will be displayed.
9. The firmware update process is complete.

