

Update Instructions

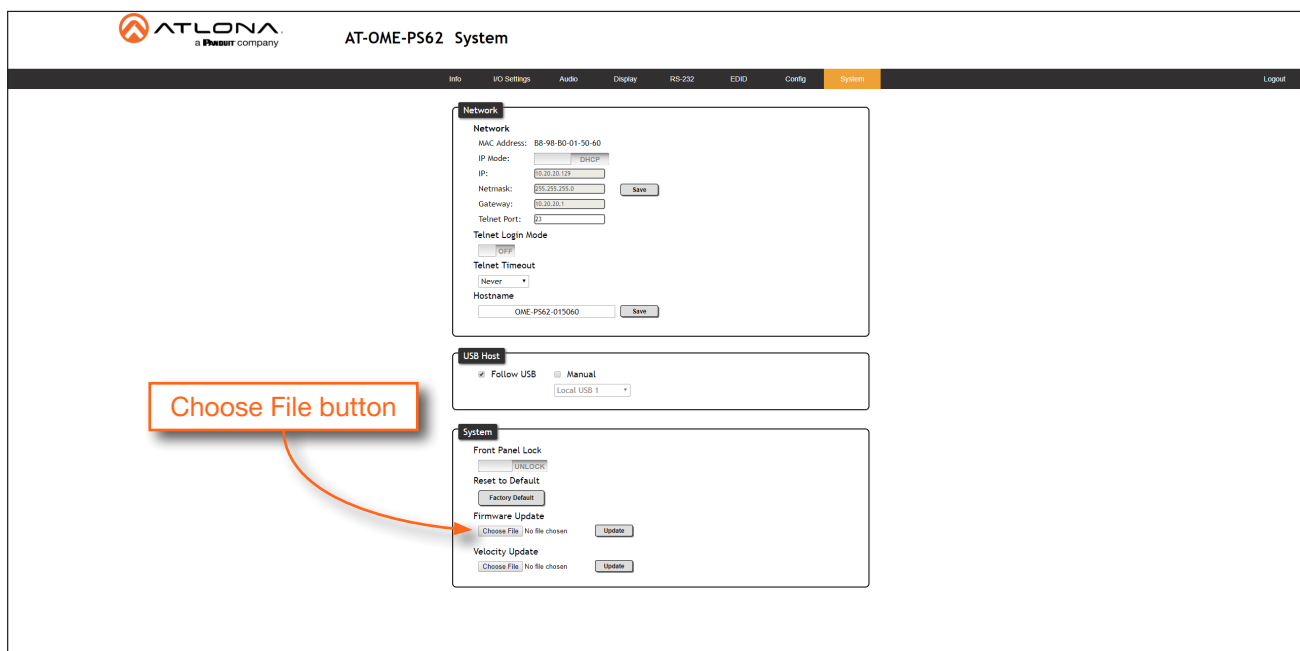
Updating the firmware is performed using the built-in web server.



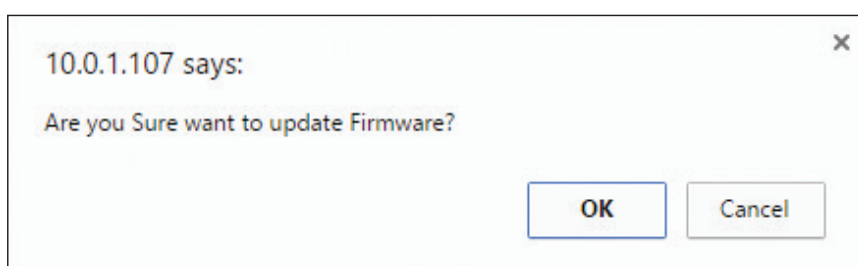
IMPORTANT: The Valens firmware update cycle can take anywhere from 5 to 15 minutes to complete.

Requirements:

- AT-OME-PS62
 - Firmware file
 - Computer on the same network as the AT-OME-PS62
1. Connect an Ethernet cable from the computer, containing the firmware, to the same network where the AT-OME-PS62 is connected.
 2. Launch a web browser and enter the IP address of the AT-OME-PS62 in the address bar.
 3. Login to the web GUI, then click **System** in the menu bar, near the top of the screen.

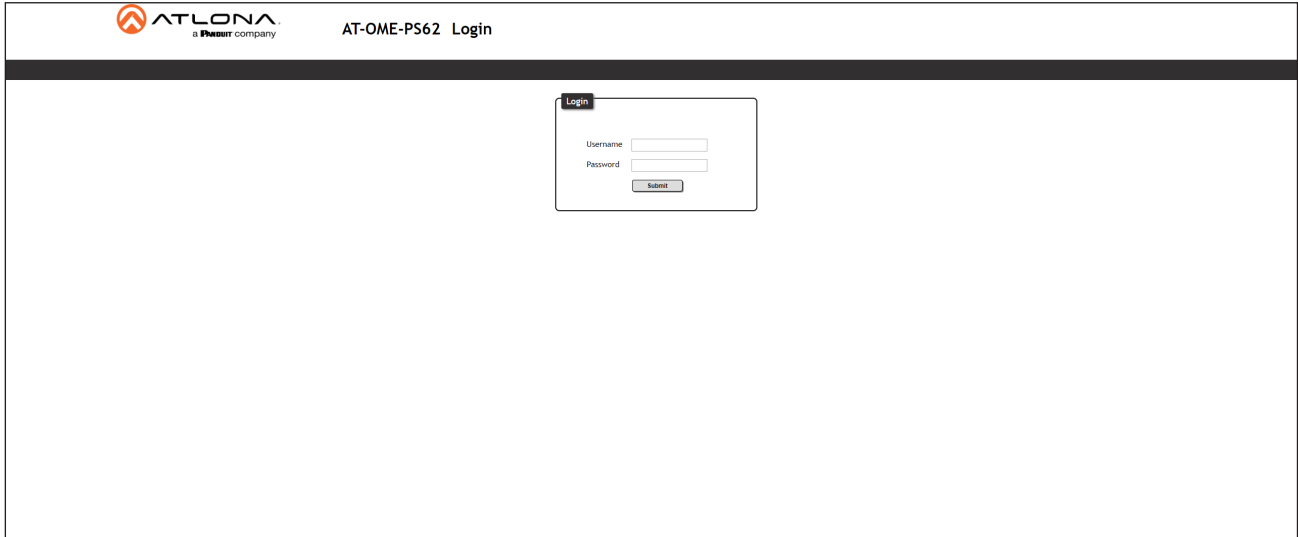


4. Click the **Choose File** button, under the **Firmware Update** section.
5. Browse to the location of the firmware file, select it, and click the **Open** button.
6. Click the **Update** button, under the **Firmware Update** section.
7. The following message box will be displayed.



Update Instructions

- Click the **OK** button to begin the firmware update process. Click the **Cancel** button to cancel the process.
- After the firmware update process is complete, the **Login** screen will be displayed.



The screenshot shows the AT-OME-PS62 Login screen. At the top left is the Atlona logo and text. To its right is the title 'AT-OME-PS62 Login'. Below the title is a dark horizontal bar. In the center of the screen is a login form with a 'Login' tab, 'Username' and 'Password' input fields, and a 'Submit' button.