

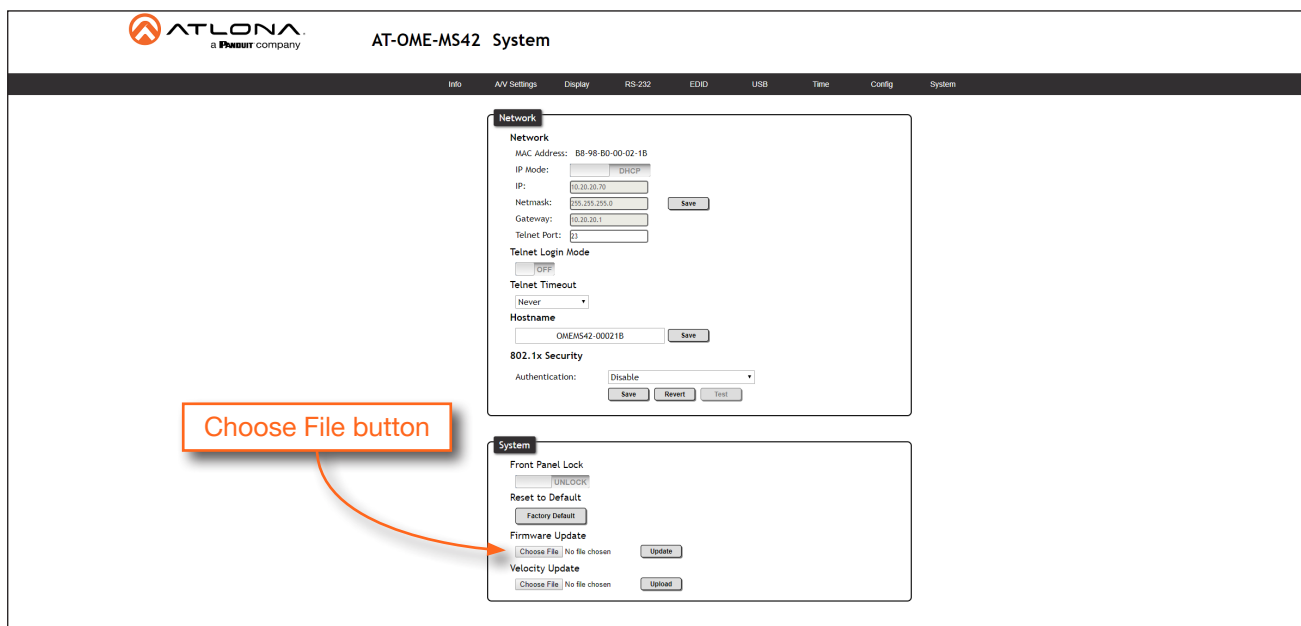
# Update Instructions

## Updating the Firmware

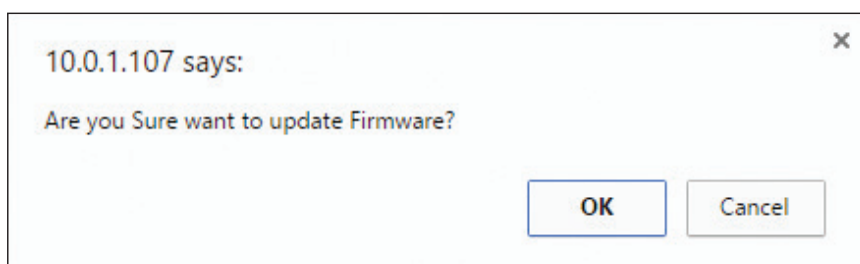
Updating the firmware is performed using the built-in web server.

Requirements:

- AT-OME-MS42
  - Firmware file
  - Computer on the same network as the AT-OME-MS42
1. Download the firmware file from [atlona.com](http://atlona.com) and extract the contents of the .zip file to a folder on the computer desktop.
  2. Connect an Ethernet cable from the computer, containing the firmware, to the same network where the AT-OME-MS42 is connected.
  3. Login to the built-in web server. Refer to the AT-OME-MS42 User Manual for details.
  4. Click **System** in the menu bar.

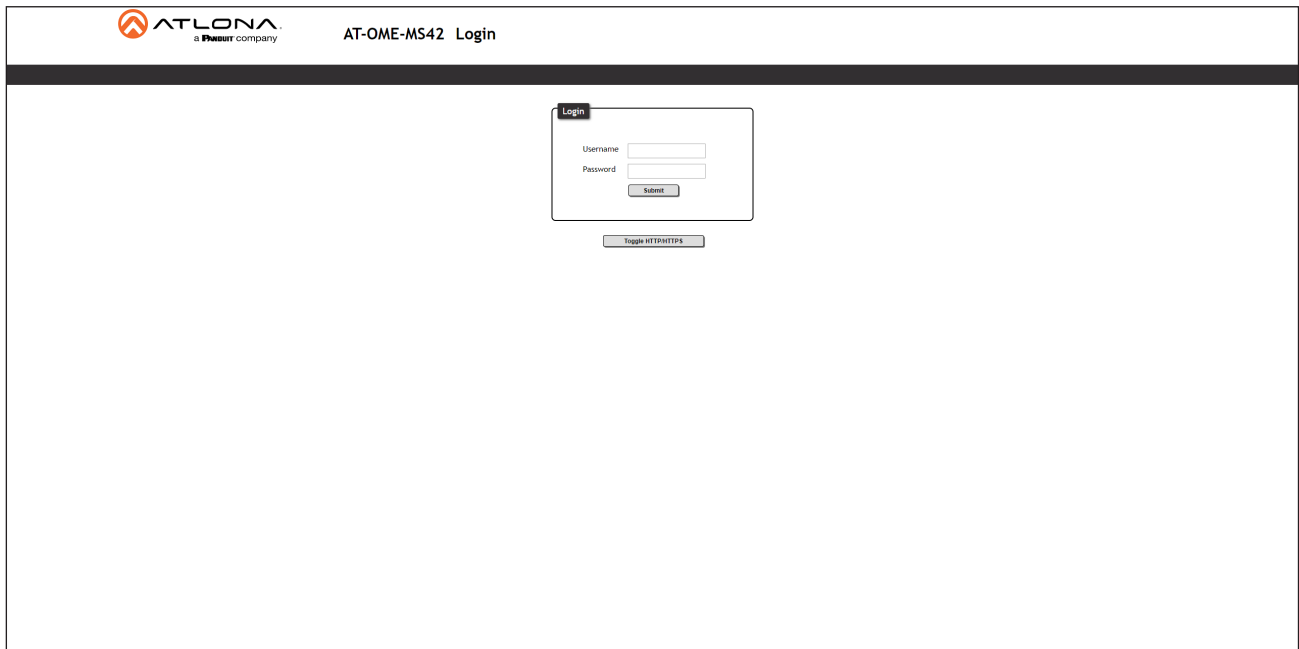


5. Click the **Choose File** button, under the **Firmware Update** section.
6. Browse to the location of the firmware file, select it, and click the **Open** button.
7. Click the **Update** button, under the **Firmware Update** section. The following message box will be displayed.



## Update Instructions

6. Click the **OK** button to begin the firmware update process. Click the **Cancel** button to cancel the process.
7. After the firmware update process is complete, the **Login** screen will be displayed.



The screenshot shows the login interface for the AT-OME-MS42 device. At the top left is the Atlona logo and text "a PANOUT company". To the right of the logo is the text "AT-OME-MS42 Login". Below this is a dark horizontal bar. The main area is white and contains a login form. The form has a title "Login" in a small box. Below the title are two input fields: "Username" and "Password". Below the "Password" field is a "Submit" button. Below the "Submit" button is a "Toggle HTTP/HTTPS" button.