

Firmware Update ~ AT-HDVS-200-RX

The unit can be updated through webGUI and USB.

Needed items (webGUI):

- New firmware - Downloaded from <http://www.atlona.com/product/AT-HDVS-200-RX>
- IP address of the unit
- Computer on the same network as the unit
- Username and password to access the webGUI of the unit

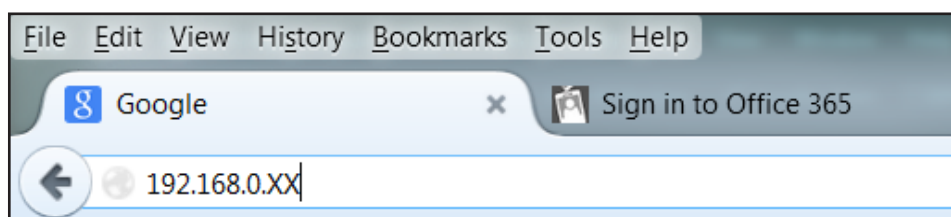
Needed items (USB):

- New firmware - Downloaded from <http://www.atlona.com/product/AT-HDVS-200-RX>
- Mini USB to USB A cable
- Computer with a USB port
- Unit and included power supply

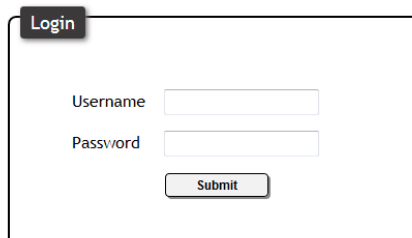
Updating (webGUI)

- Plug a LAN cable into the unit and your network router (if not already connected to the network)
- Type the IP address of the unit into a web browser (as seen below)

Note: Computer must be on the same network as the unit to access through IP



Important: If any stability issues are experienced, disable any anti-virus or firewall that may be interfering with network communication to the unit. Once set up is done and the webGUI is no longer being used, the firewall and anti-virus can be re-enabled.

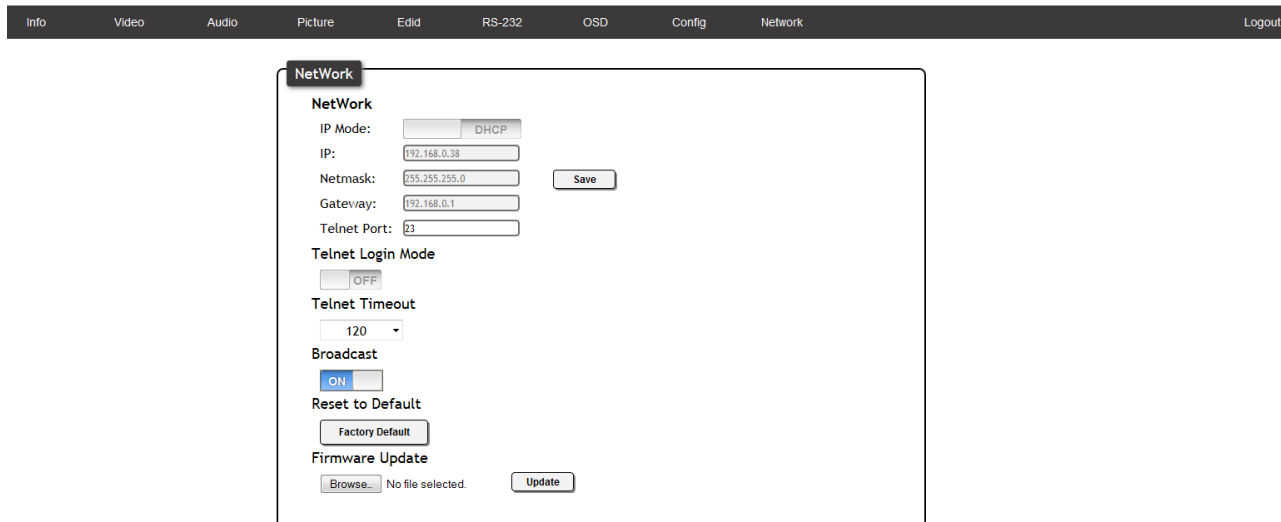
A login screen with a dark header bar. Below the header is a white box with a black border. Inside the box, the word 'Login' is in a small black box at the top left. Below it are two input fields: 'Username' and 'Password'. At the bottom of the box is a 'Submit' button.

A login screen will appear (this is the same log in for admin and general users).

- Login using the username and password (this would have been set up during installation)

Once logged in:

- Select the link named 'Network'

- Select the browse button under Firmware Update
- Select the new firmware file that was downloaded either from atlona.com or box.com
- Press the update button

A progress bar will display as the update is completed. After the update is complete, if a restart is required, the webGUI will display a prompt. The firmware update is now complete and the unit is ready to be used.

Updating (USB)

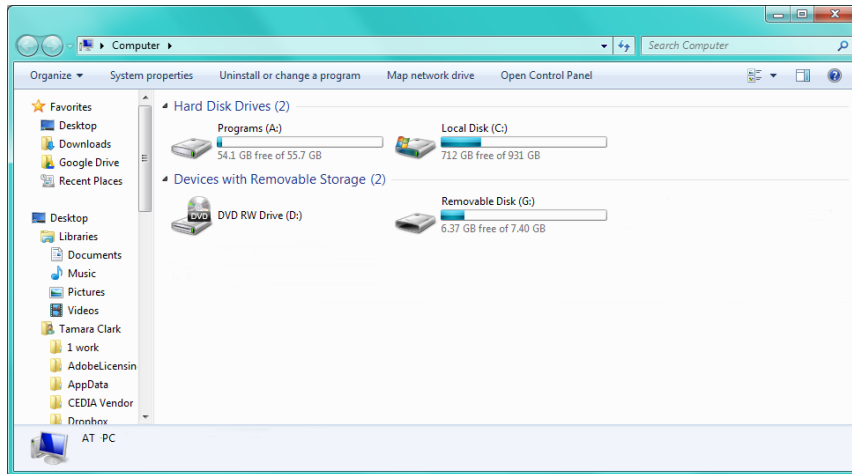
Putting the unit into update mode:

- Unplug the power from the HDVS-200
- Press and hold the menu button
- Plug the power back into the HDVS-200 (while still holding the menu button)
- Continue holding the menu button for 5 seconds then release it
- Connect HDVS-200 to a computer using the mini USB to USB A cable

Updating

- Click the option, "Open folder to view files" (if AutoPlay runs)





If the computer does not auto detect the connection, open "My Computer" and select the USB drive.

- Place the latest firmware in the folder (if there is already a file in the folder, delete it)
- Remove the USB cable from the HDVS-200 and computer
- Unplug the power cable from the HDVS-200
- Plug the power cable back in

The update process is complete and the unit is ready to be used