

Update Instructions

The UHD switchers can be updated through webGUI and USB.

Needed items (webGUI):


- New firmware - Downloaded from either atlona.com or through a box.com link sent by a Technical Support representative
- IP address of the Switcher
- Computer on the same network as the Switcher
- Username and password to access the webGUI of the Switcher

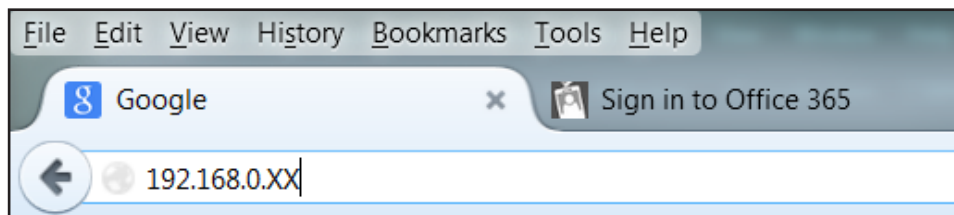
Needed items (USB):

- New firmware - Downloaded from either atlona.com or through a box.com link sent by a Technical Support representative
- Mini USB to USB A cable
- Computer with a USB port
- Switcher and included power supply

Updating (webGUI)

1. Plug a LAN cable into the switcher and your network router (if not already connected to the network)
2. Type the IP address of the switcher into a web browser (as seen below)

 **NOTE:** Computer must be on the same network as the switcher to access through IP



IMPORTANT: If any stability issues are experienced, disable any anti-virus or firewall that may be interfering with network communication to the switcher. Once set up is done and the webGUI is no longer being used, the firewall and anti-virus can be re-enabled.

**ATLONA**

Technical Support: US: 1 (877) 536-3976 International: 1 (408) 962-0515

Admin Login

User name

Password

A login screen will appear (this is the same log in for admin and general users).

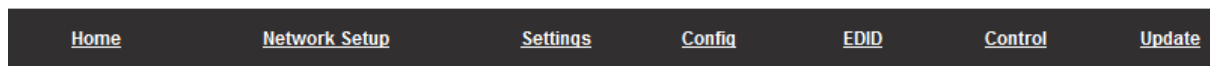
3. Login using the username and password (this would have been set up during installation)

Once logged in:

4. Select the link named 'Network'



AT-UHD-SW-52ED Update



Firmware Update

No file selected.

0%

Valens Tx Update

No file selected.

0%

The update page displays the switcher and HDBaseT transmitter firmware updating fields to make it easy to update not just the switch but the HDBaseT output chip as well.

5. Select the browse button under Firmware Update (for switcher updating)
6. Select the new firmware file that was downloaded either from atlona.com or box.com
7. Press the update button

A progress bar will display as the update is completed. After the update is complete, if a restart is required, the webGUI will display a prompt. The firmware update is now complete and the switcher is ready to be used.

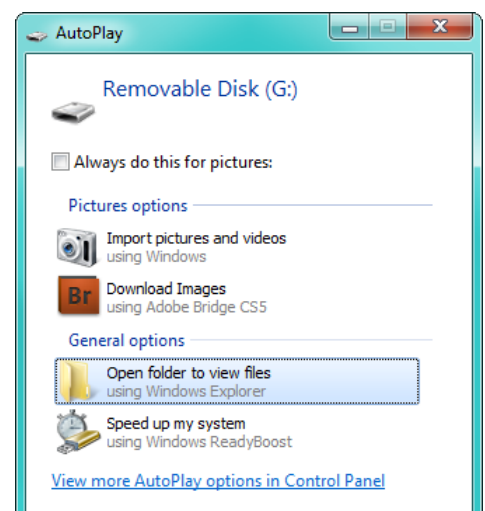
Updating (USB)

Putting the unit into update mode:

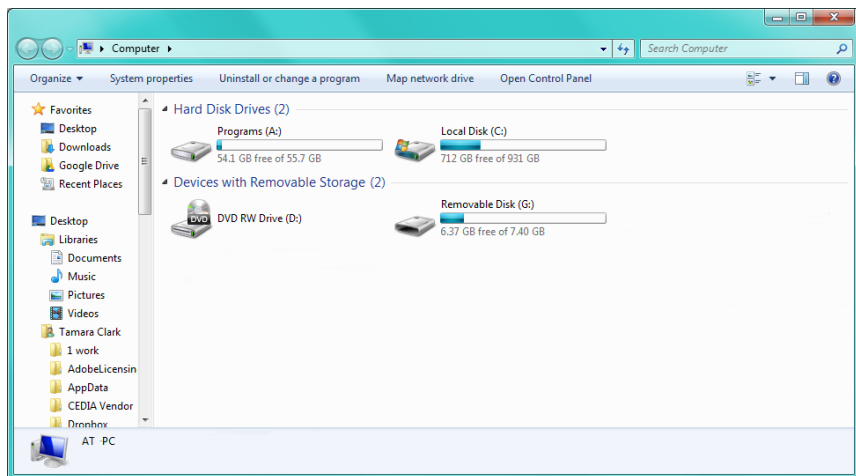
1. Unplug the power from the UHD-SW
2. Connect UHD-SW to a computer using the mini USB to USB A cable
3. Press and hold the input key
4. Plug the power back into the UHD-SW (while still holding the input key)
5. Continue holding the input key for 5 seconds then release it

Updating:

6. Click the option, "Open folder to view files" (if AutoPlay runs)



Update Instructions



NOTE: If the computer does not auto detect the connection, open “My Computer” and select the USB drive.

7. Place the latest firmware in the folder (if there is already a file in the folder, delete it)
8. Remove the USB cable from the UHD-SW and computer
9. Unplug the power cable from the UHD-SW
10. Plug the power cable back in

The update process is complete and the switcher is ready to be used