

AT-LINE-PRO2 Updating Guide

I. Requirements:

1. AT-LINE-PRO2 w/ power supply
2. Desktop PC or Laptop PC w/ RS-232 Port
3. RS-232 cable (DB9 Female-to-Male, non-crossover type)
4. ISP software (8051spWriter.exe)
5. Latest firmware (downloadable from atlona.com)

II. Installation:

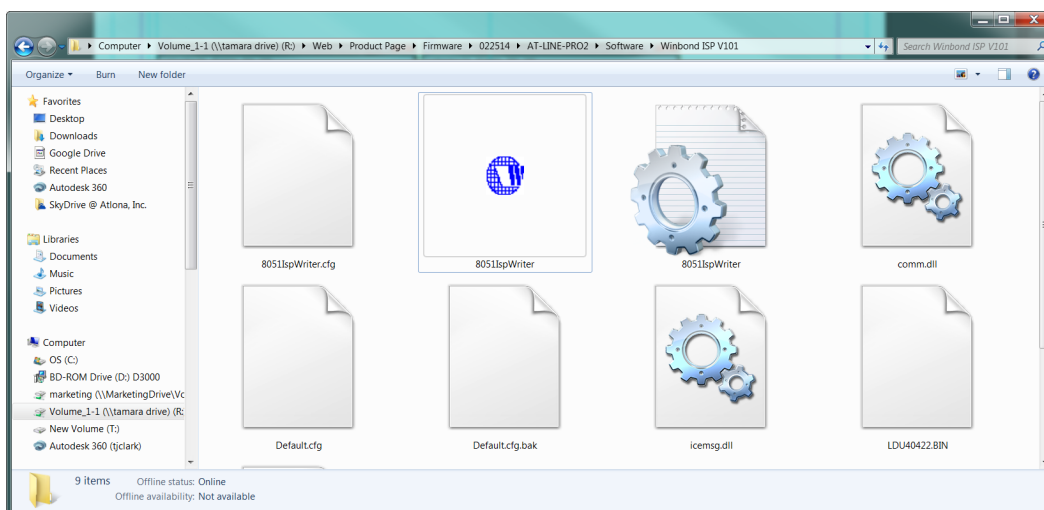
1. Connect AT-LINE-PRO2 to a PC using the RS-232 cable

III. ISP Mode:

1. Unplug the power supply (if plugged in) from the LINE-PRO2
2. Press and hold the power button
3. Plug the power supply in (while still holding the power button)
If the power LED does not illuminate, it has entered ISP mode

IV. Firmware Upgrade:

1. Run 8051spWriter.exe (see picture A)



2. In the Select Chip field choose the "W79E632" chip (see picture B)

3. Use the "Select File0" button to browse the computer and select the firmware file ending .T00

4. Use the "Select File1" button to browse the computer and select the firmware file ending .T01

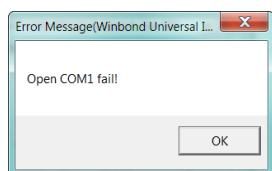
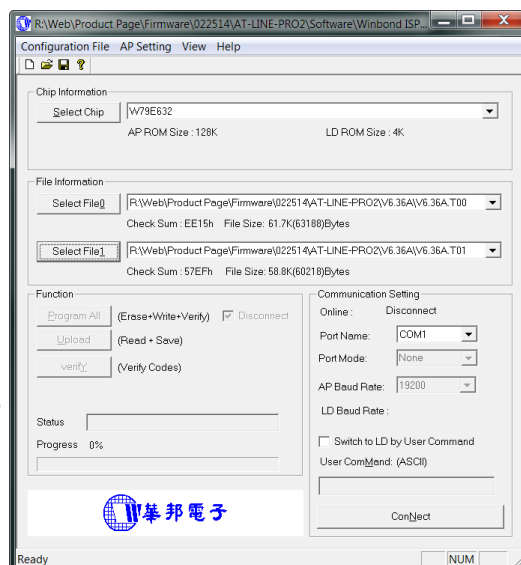
5. Press the "ConNect" button to ensure the PRO2 and PC have a good connection

If the connection fails an error message will pop up "Open COMX fail!" (see picture C)

If the connection is good the button will change from "ConNect" to "ConNect Next Chip"

6. Press "Program All" to start the firmware upgrade

The status bar on the bottom left will display firmware progress.



Once the update has been completed successfully the unit will reboot and start up normally.