

Firmware Update ~ AT-HDVS-200-TX & TX-WP

The unit can be updated through webGUI and USB.

Needed items (webGUI):

- New firmware - Downloaded from <http://www.atlona.com/product/AT-HDVS-200-TX> or <http://www.atlona.com/product/AT-HDVS-200-TX-WP>
- IP address of the unit
- Computer on the same network as the unit
- Username and password to access the webGUI of the unit

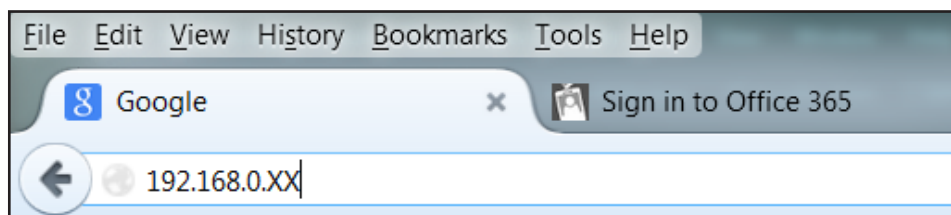
Needed items (USB):

- New firmware - Downloaded from <http://www.atlona.com/product/AT-HDVS-200-TX> or <http://www.atlona.com/product/AT-HDVS-200-TX-WP>
- Mini USB to USB A cable
- Computer with a USB port
- Unit and optional power supply or HBaseT cable connected to PoE receiver

Updating (webGUI)

- Plug a LAN cable into the unit and your network router (if not already connected to the network)
- Type the IP address of the unit into a web browser (as seen below)

Note: Computer must be on the same network as the unit to access through IP



Important: If any stability issues are experienced, disable any anti-virus or firewall that may be interfering with network communication to the unit. Once set up is done and the webGUI is no longer being used, the firewall and anti-virus can be re-enabled.



Login

Username

Password

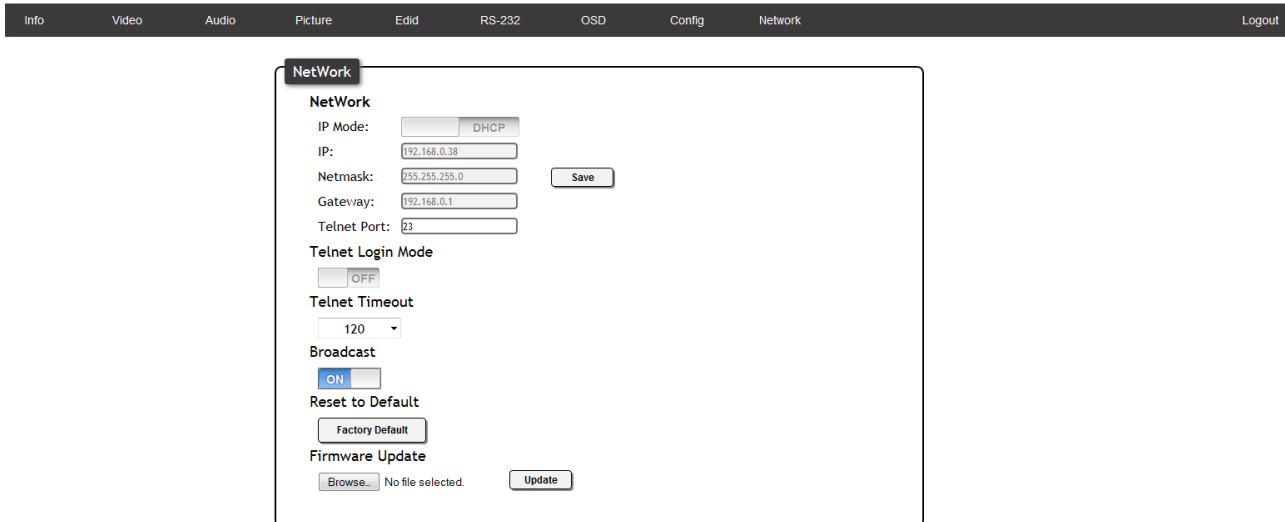
Submit

A login screen will appear (this is the same log in for admin and general users).

- Login using the username and password (this would have been set up during installation)

Once logged in:

- Select the link named 'Network'

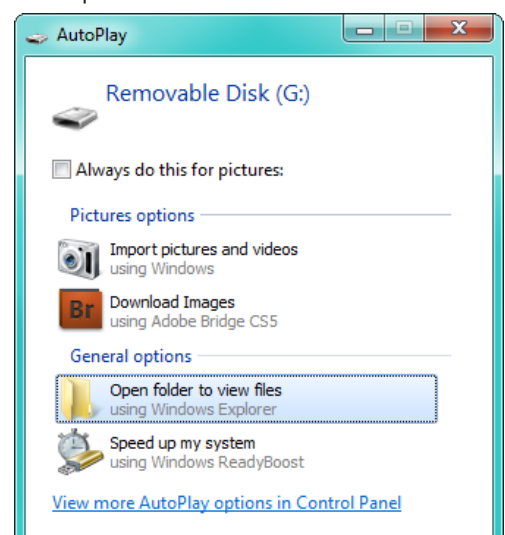



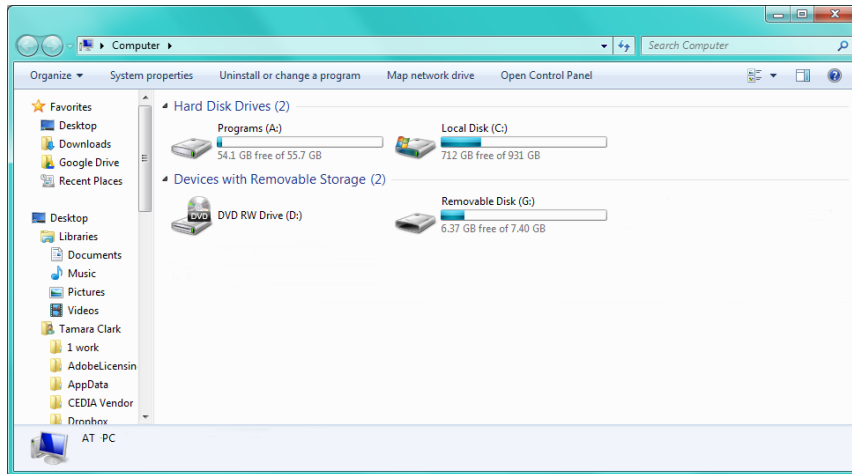
- Select the browse button under Firmware Update
- Select the new firmware file that was downloaded either from atlona.com or box.com
- Press the update button

A progress bar will display as the update is completed. After the update is complete, if a restart is required, the webGUI will display a prompt. The firmware update is now complete and the unit is ready to be used.

Updating (USB)

- Connect a mini-USB type-B to USB type-A type cable from the FW port on the HDVS-200 to a USB port on the computer which contains the firmware file
- **Note:** To access the USB port on the HDVS-200-TX-WP, remove the front face plate
- Press and hold the INPUT button
- While holding down the INPUT button, power the HDVS-200 by connecting an Ethernet cable from the HDBaseT OUT port, on the HDVS-200, to an HDBaseT power source
- Continue holding the INPUT button until the internal disk folder for the HDVS-200 is displayed. If the AutoPlay dialog is displayed, then click the "Open folder to view files" option.
- Remove any existing firmware files in the folder
- Drag and drop the firmware (*.bin) file into the folder





If the computer does not auto detect the connection, open "My Computer" and select the USB drive.

- Disconnect the USB cable from the HDVS-200 and the computer
- Power-cycle the HDVS-200 by disconnecting and reconnecting the power

The update process is complete and the unit is ready to be used