

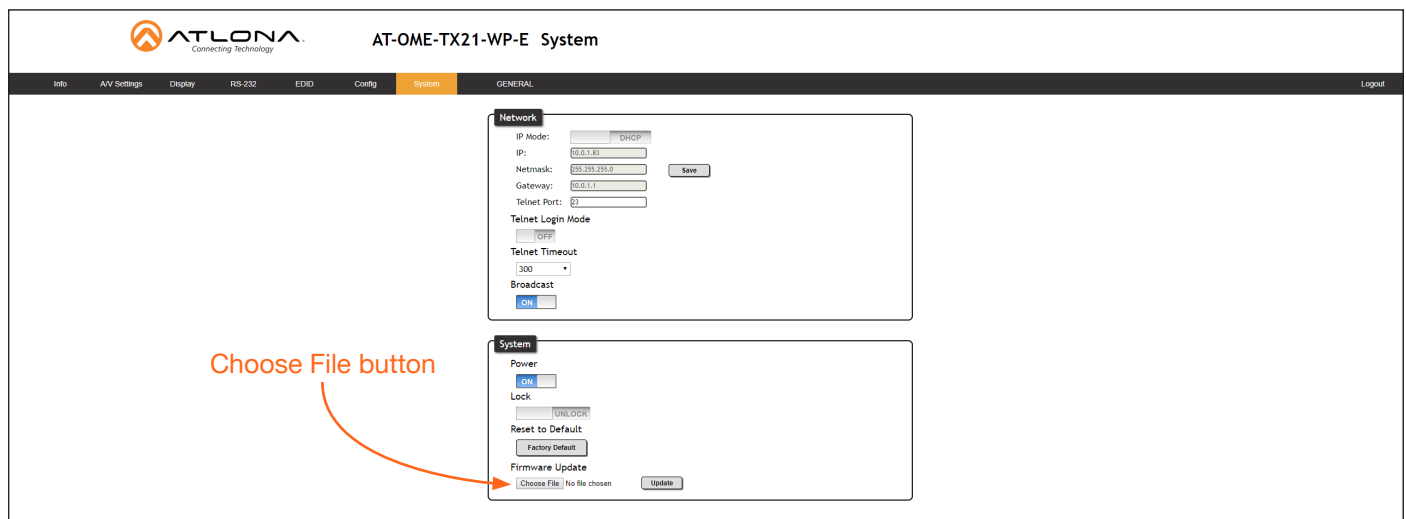
Update Instructions

Updating the firmware can be completed using either the USB interface or the web GUI. Atlona recommends using the web GUI for updating the firmware. However, if a network connection is not available, the AT-OME-TX21-WP-E firmware can be updated using a USB-A to USB mini-B cable.

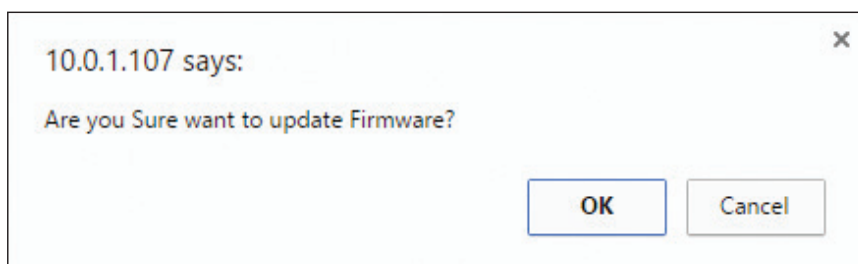
Using the Web GUI

Requirements:

- AT-OME-TX21-WP-E
 - Firmware file
 - Computer
1. Connect an Ethernet cable from the computer, containing the firmware, to the same network where the AT-OME-TX21-WP-E is connected.
 2. Go to the **System** page (page 36) in the web GUI.

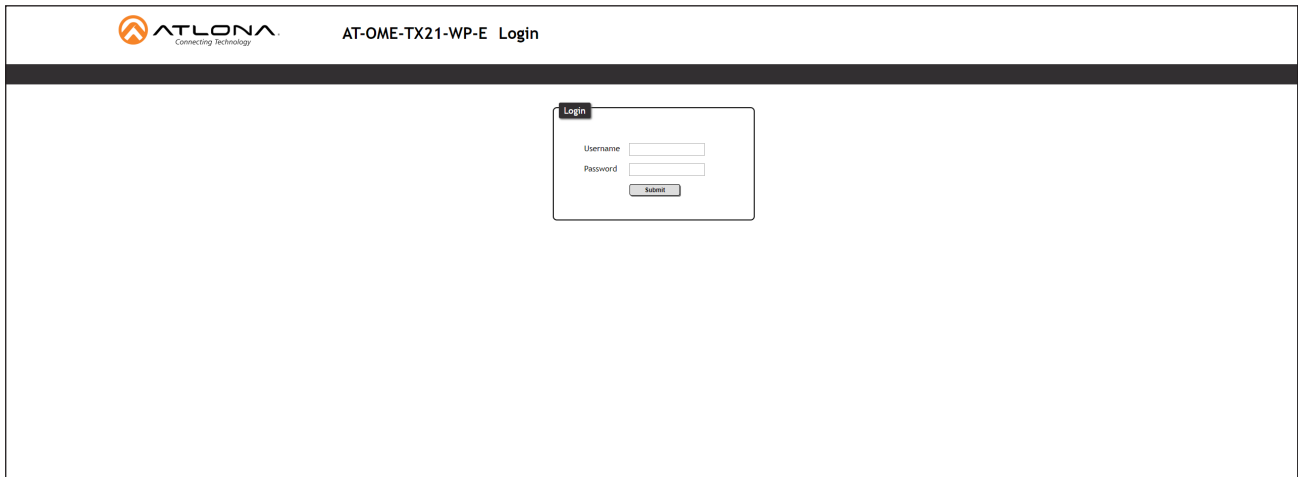


3. Click the **Choose File** button, under the **Firmware Update** section.
4. Browse to the location of the firmware file, select it, and click the **Open** button.
5. Click the **Update** button, under the **Firmware Update** section.
6. The following message box will be displayed.



Update Instructions

- Click the **OK** button to begin the firmware update process. Click the **Cancel** button to cancel the process.
- After the firmware update process is complete, the **Login** screen will be displayed.



ATLONA
Connecting Technology

AT-OME-TX21-WP-E Login

Login

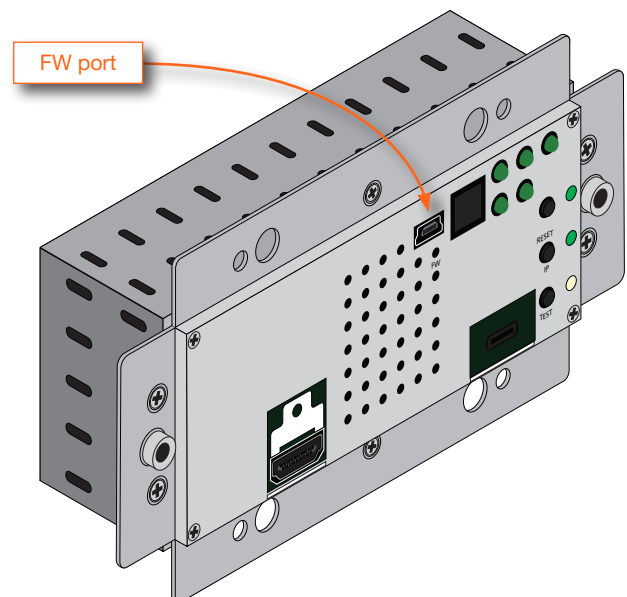
Username

Password

Using USB

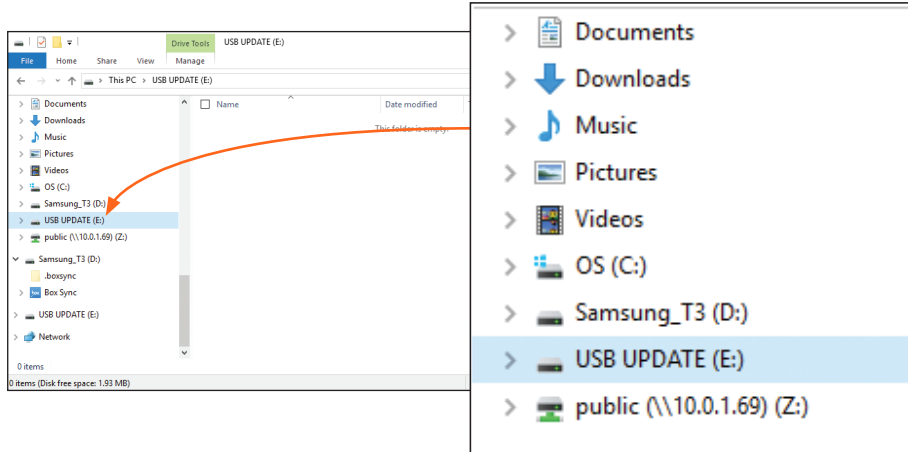
Requirements:

- AT-OME-TX21-WP-E
 - Firmware file
 - Computer running Windows
 - USB-A to USB mini-B cable
- Remove the wall plate from the AT-OME-TX21-WP-E. Refer to [Faceplate Removal and Assembly \(page 36\)](#) if necessary.
 - Locate the firmware port.
 - Connect the USB-A to USB mini-B cable between the PC and the firmware port on the AT-OME-TX21-WP-E. The unit will be powered by the USB cable.



Update Instructions

4. The USB UPDATE folder will be displayed. If this folder is not displayed, automatically, select the USB UPDATE drive from Windows Explorer.



5. Delete all files from the USB UPDATE drive, if any are present.
6. Drag-and-drop the firmware file to the drive.
7. After the file has been copied, disconnect the USB cable from both the computer and the AT-OME-TX21-WP-E.
8. The firmware update process is complete.
9. Reconnect the Ethernet cable to the **HDBaseT OUT** port.