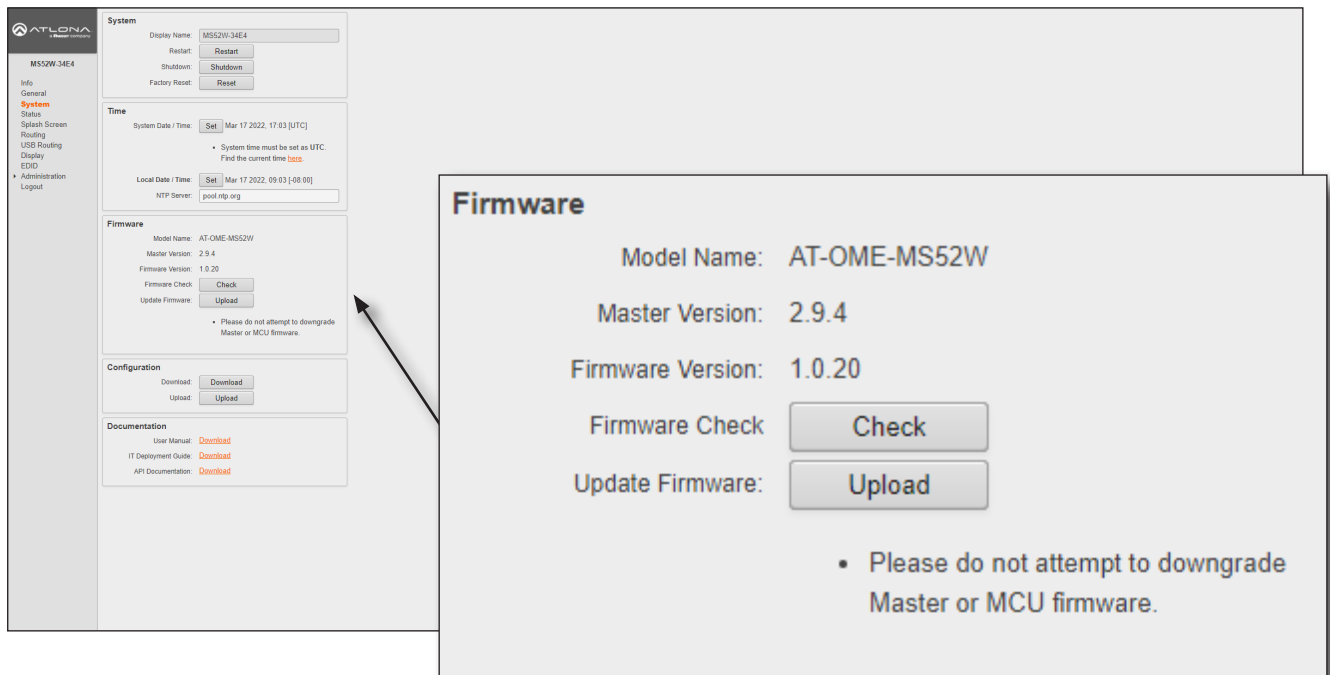


Update Instructions

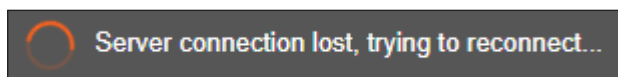
Updating the firmware is performed using the built-in web server. *It is recommended to review both pages of this document, before proceeding, in order to become familiar with the update procedure.*

Requirements:

- AT-OME-MS52W
 - Firmware file
 - Computer on a network that can reach the network where AT-OME-MS52W is connected
1. Download the latest firmware from atlona.com and extract the contents of the .zip file to a folder on the computer.
 2. Connect an Ethernet cable from the computer, containing the firmware, to the same network where the AT-OME-MS52W is connected.
 3. Login to the unit using <http://<IP Address>>.
 4. Click **System** in the side menu bar.



5. Under the **Firmware** window group, click the **Upload** button.
6. Browse to the location of the SW510_MS52W-[version].bin firmware file, select it, and click the **Open** button.
7. During the update process, the following message will appear in the upper-right corner of the screen. The unit will automatically reboot as part of the update process.



IMPORTANT: Note that the firmware update process could take anywhere from 8 to 10 minutes to complete. Do not disconnect power or touch the unit during the firmware update process.

Update Instructions

8. After the firmware process has completed, the AT-OME-MS52W will automatically reboot and the following message will appear at the top of the screen.

Communication problem Take note of any unsaved data, and click here or press ESC to continue.

9. Click the message or press the ESC key to return to the **Login** screen. Enter the login credentials.
10. The firmware update process is complete.

Addendum for updating to firmware version 2.9.2:

Firmware version 2.9.2 includes a Valens firmware update to 7.5.4. Since the Valens update is part of the normal 2.9.2 firmware update, the update process is more time-consuming. The following table provide a general time line that can be used as a metric, to estimate the completion of the 2.9.2 firmware update.

Estimated Time (min:sec)	Event
4:00	Video output will stop
4:20	Output 1 LED begins to cycle slowly between input LEDs
5:00	Output 1 LED HDMI 3 blinks rapidly (Valens update begins)
6:10	Output 1 BYOD blinks quickly (Valens update)
7:45	Output 1 LED begins to cycle (Valens update complete)
8:15	Atlona Splash Screen will be displayed
10:30	AT-OME-MS52W power-up sequence
11:00	Output 1 LED begins to cycle quickly/BYOD screen comes up
12:00	Firmware/Valens update complete