

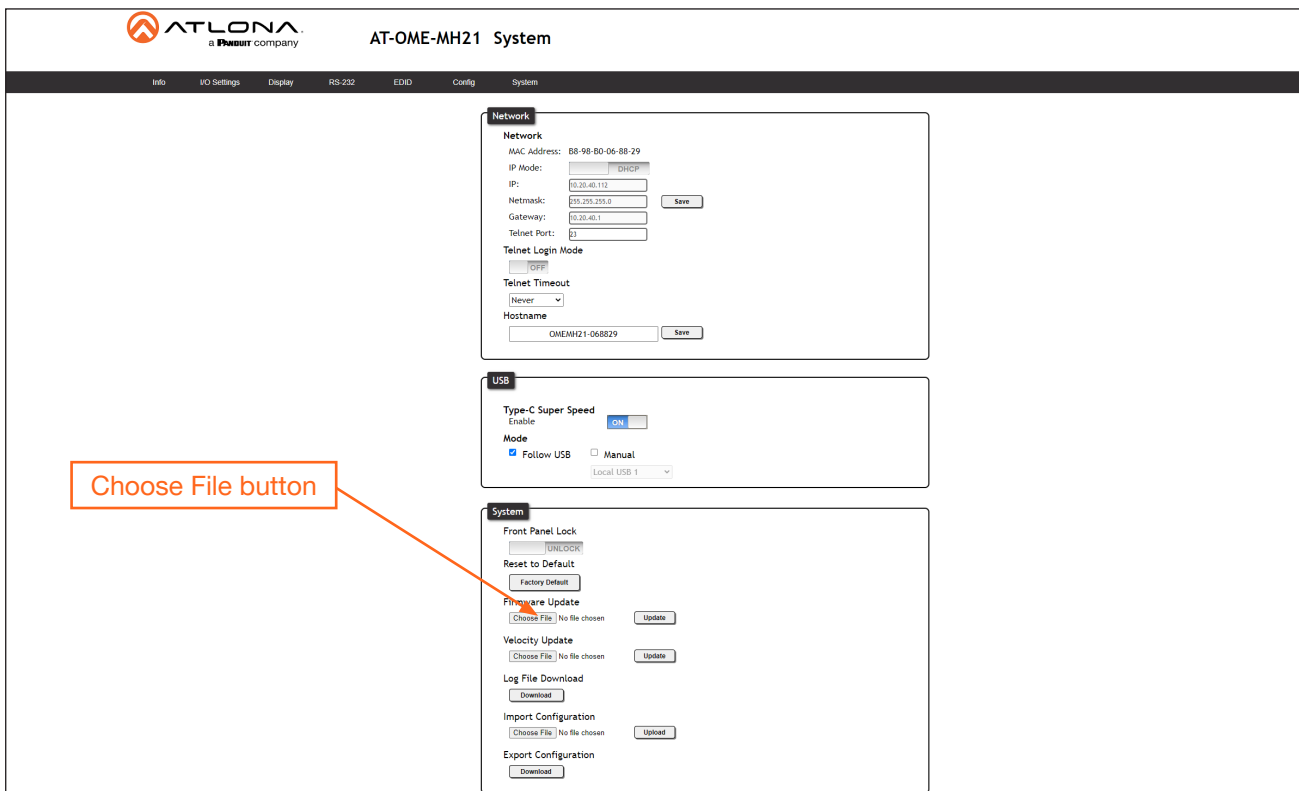
# Update Instructions

Updating the firmware can be performed using either the built-in web server or over USB.

## Using the Web Server

Requirements:

- AT-OME-MH21 / AT-OME-MH21-CP
  - Firmware file
  - Computer on the same network as the AT-OME-MH21 / AT-OME-MH21-CP
1. Download the firmware file from [atlona.com](http://atlona.com) and extract the contents of the .zip file to a folder on the computer desktop.
  2. Power on the unit and connect an Ethernet cable from the computer, containing the firmware, to the same network where the AT-OME-MH21 / AT-OME-MH21-CP is connected.
  3. Login to the web server.
  4. Click **System** in the menu bar.

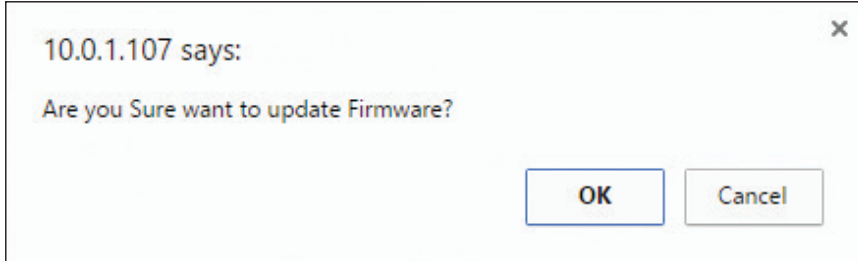


The screenshot shows the AT-OME-MH21 System web interface. The top navigation bar includes links for Info, I/O Settings, Display, RS-232, EIO, Config, and System. The main content area is divided into three sections: Network, USB, and System. The Network section contains fields for MAC Address, IP Mode (DHCP), IP, Netmask, Gateway, Telnet Port, Telnet Login Mode (OFF), Telnet Timeout (Never), and Hostname. The USB section contains a Type-C Super Speed toggle (ON) and a Mode selection (Follow USB or Manual). The System section contains a Front Panel Lock toggle (UNLOCK), a Reset to Default button, and three update sections: Firmware Update, Velocity Update, and Log File Download. Each update section has a 'Choose File' button and an 'Update' button. An orange box labeled 'Choose File button' points to the 'Choose File' button under the Firmware Update section.

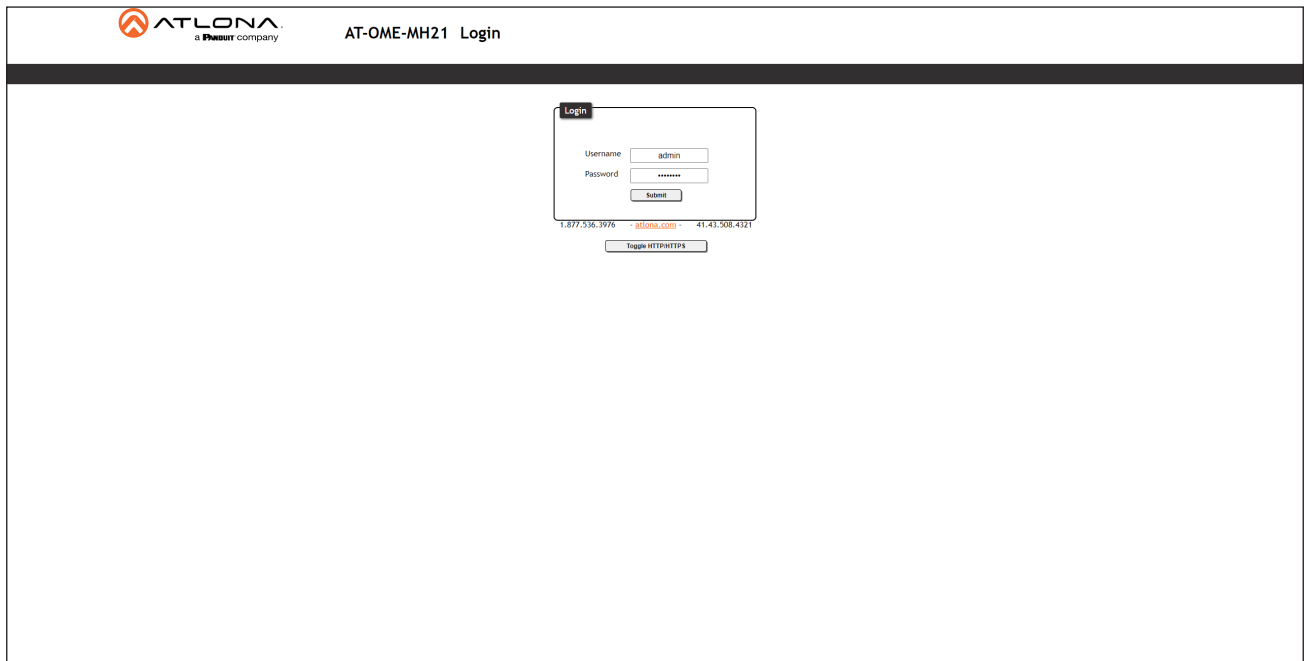
5. Click the **Choose File** button, under the **Firmware Update** section.

## Update Instructions

6. Browse to the location of the firmware file, select it, and click the **Open** button. Click the **Update** button, under the **Firmware Update** section. The following message box will be displayed.



7. Click the **OK** button to begin the firmware update process. Click the **Cancel** button to cancel the process.
8. After the firmware update process is complete, the **Login** screen will be displayed.



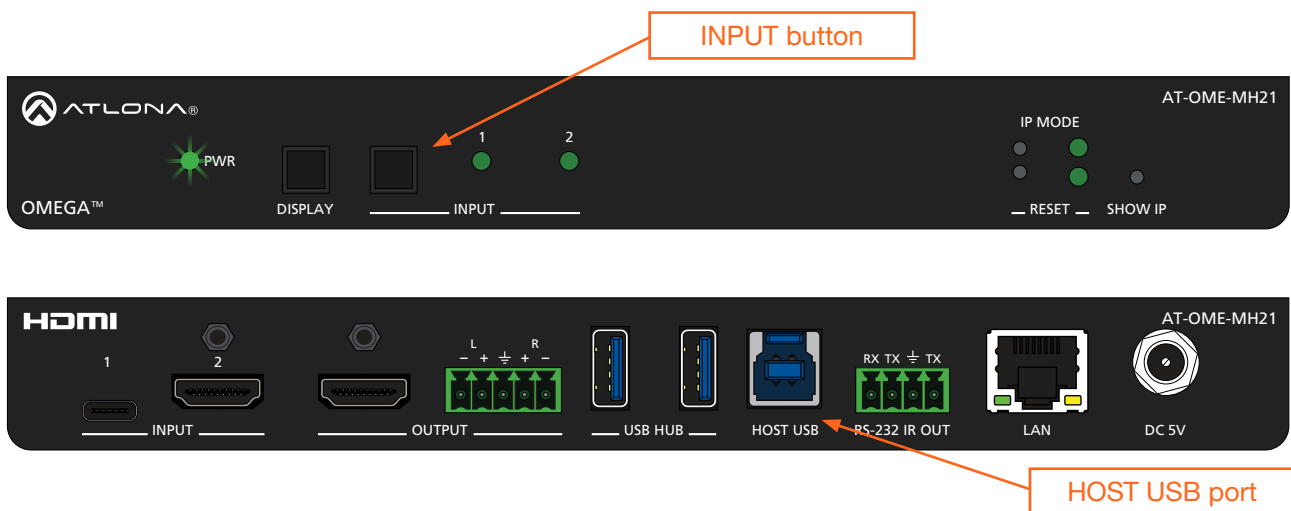
## Update Instructions

### Using USB

#### Requirements:

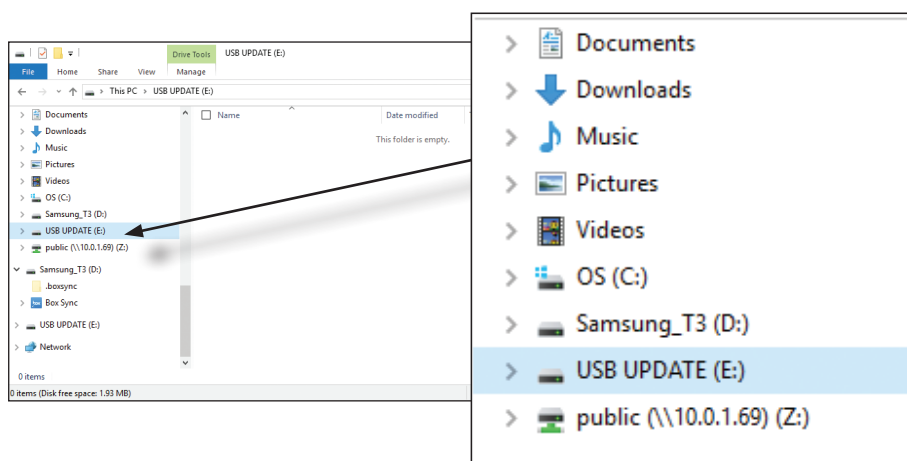
- AT-OME-MH21 / AT-OME-MH21-CP
- Firmware file
- Computer running Windows
- USB-A to USB-B cable

1. Make sure the unit is powered, using the included power supply.
2. Press and hold the **INPUT** button. While depressing the **INPUT** button, connect the USB cable between the **HOST USB** port on the AT-OME-MH21 / AT-OME-MH21-CP and the computer containing the firmware.



3. The USB UPDATE folder will be displayed.

If this folder is not displayed, automatically, select the USB UPDATE drive from Windows Explorer.



4. Delete all files from the USB UPDATE drive, if any are present.
5. Drag-and-drop the firmware file to the drive folder. The **PWR** LED indicator will flash green during the update procedure.
6. Disconnect the USB cable from the AT-OME-MH21 / AT-OME-MH21-CP.
7. The AT-OME-MH21 / AT-OME-MH21-CP will automatically reboot. When the **PWR** LED indicator is solid green, the firmware update process will be complete. The unit is now ready for use.