

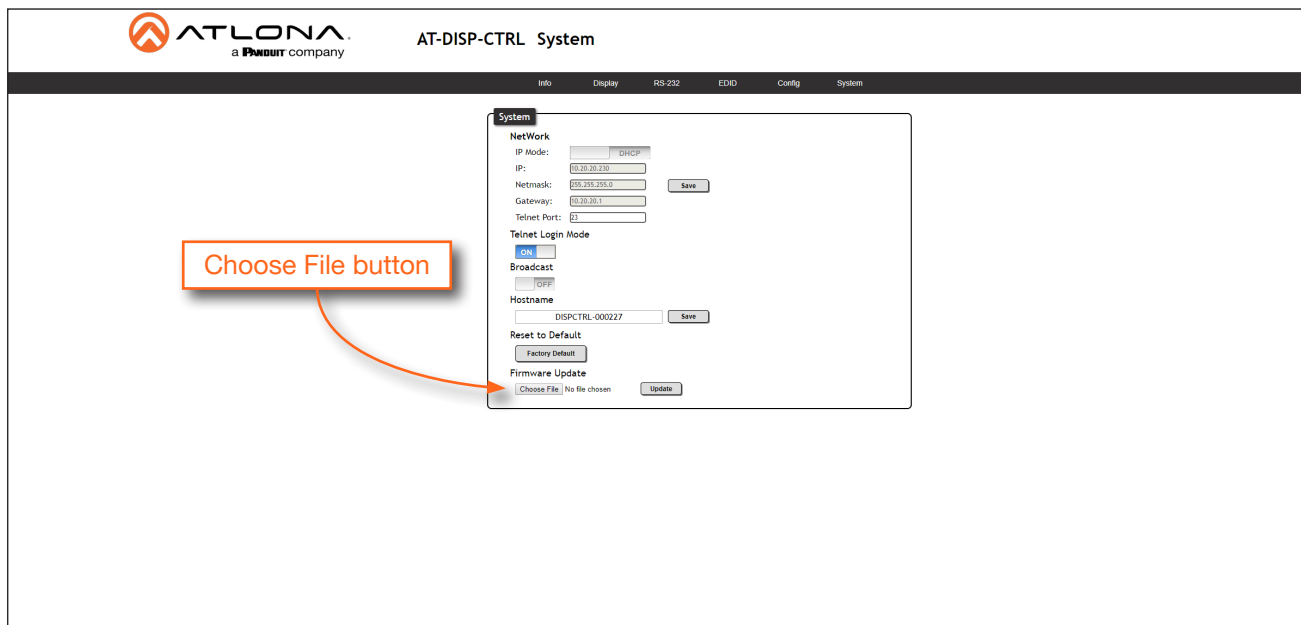
Update Instructions

Updating the firmware can be completed using either the USB interface or the web server. Atlona recommends using the web server for updating the firmware. However, if a network connection is not available, the AT-DISP-CTRL firmware can be updated using a USB-A to USB mini-B cable.

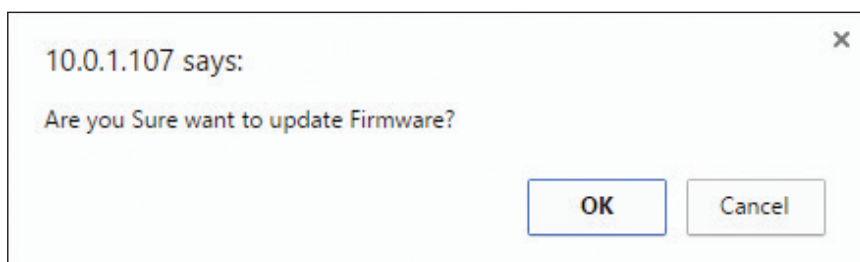
Using the Web Server

Requirements:

- AT-DISP-CTRL
 - Firmware file
 - Computer on the same network as the AT-DISP-CTRL
1. Download the firmware file from atlona.com and extract the contents of the .zip file to a folder on the computer desktop.
 2. Connect an Ethernet cable from the computer, containing the firmware, to the same network where the AT-DISP-CTRL is connected.
 3. Login to the web server. Refer to the User Manual for more information.
 4. Click **System** in the menu bar and click the **Choose File** button, under the **Firmware Update** section.

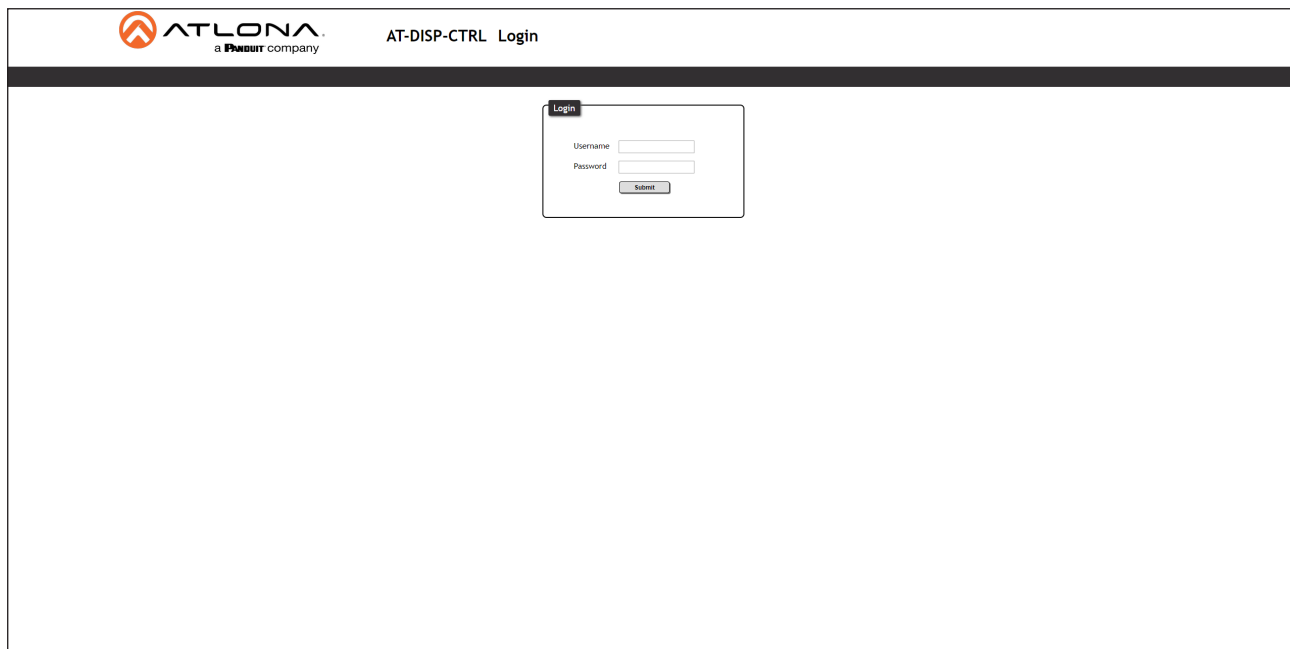


5. Browse to the location of the firmware file, select it, and click the **Open** button.
6. Click the **Update** button, under the **Firmware Update** section. The following message box will be displayed.



Update Instructions

6. Click the **OK** button to begin the firmware update process. Click the **Cancel** button to cancel the process.
7. After the firmware update process is complete, the **Login** screen will be displayed.

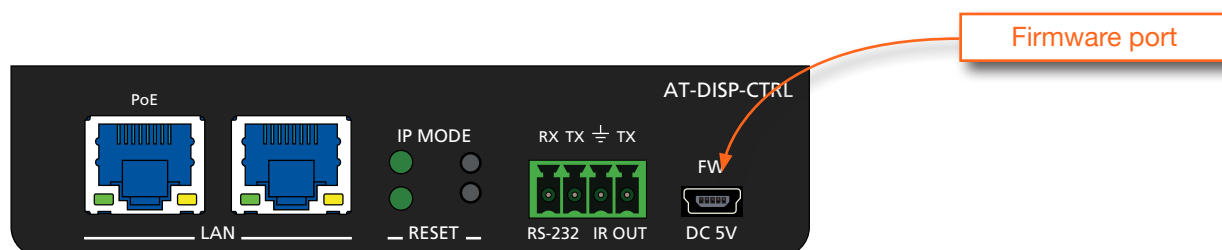


Using USB

Requirements:

- AT-DISP-CTRL
- Firmware file
- Computer
- USB-A to USB mini-B cable

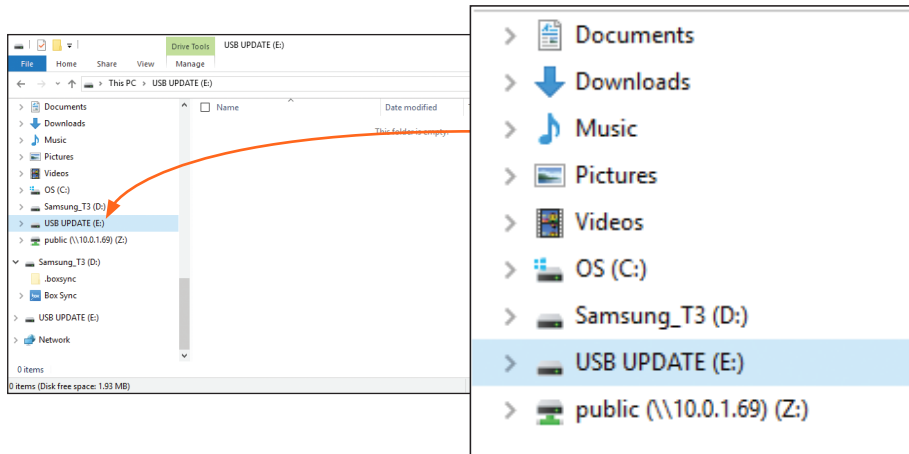
1. Disconnect power from the AT-DISP-CTRL.
2. Connect a USB-A to USB mini-B cable between the PC and the firmware port on the AT-DISP-CTRL. The unit will be powered by the USB cable.



Update Instructions

3. The USB UPDATE folder will be displayed.

If this folder is not displayed, automatically, select the USB UPDATE drive from Windows Explorer.



4. Delete all files from the USB UPDATE drive, if any are present.
5. Drag-and-drop the firmware file to the drive.
6. After the file has been copied, disconnect the USB cable from both the computer and the AT-DISP-CTRL.
7. The firmware update process is complete.