

# AT-HDSync Updating Guide

## I. Requirements:

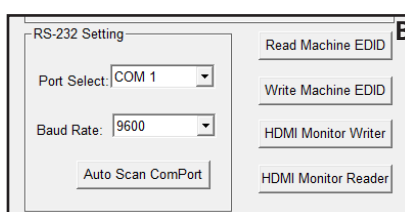
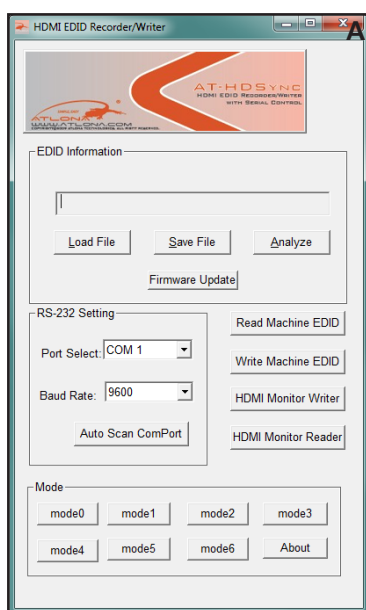
1. AT-HDSync w/ power supply
2. Desktop PC or Laptop PC w/ RS-232 Port
3. RS-232 cable (9-pin, Female-to-Male, non-crossover type)

## II. Installation:

1. Connect a 9pin to 9pin cable from the HDSync to your PC.  
(a 9pin to USB cable may also be used)
2. Turn on your PC and the HDSync.
3. Install "HDMI EDID Recorder/Writer" software

## III. Firmware Update:

1. Open the software file "HDMI EDID Recorder" (see picture A)

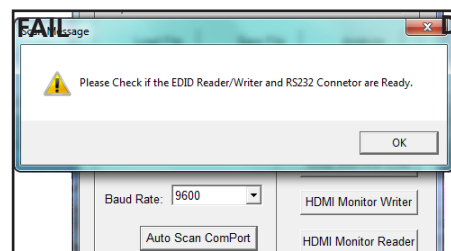
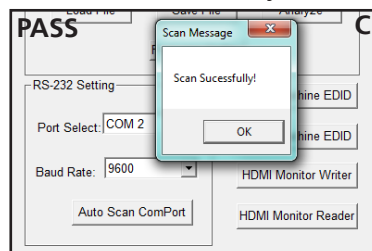


2. Once open (as pictured to the left), you should see the "RS-232 Setting" box.

3. Press the "Auto Scan ComPort" button. (see picture B)

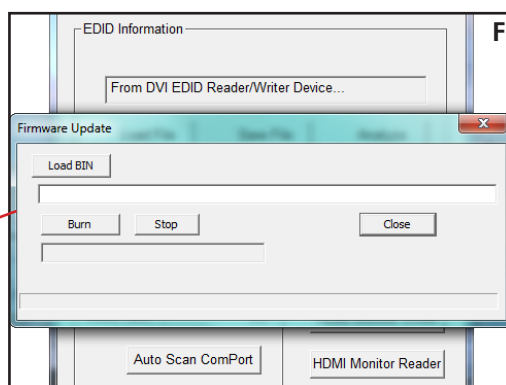
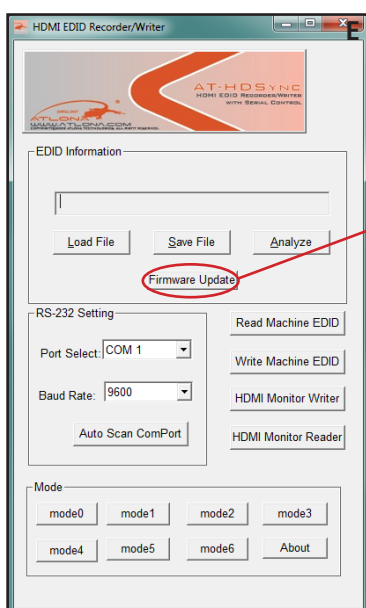
**\*\*If successful you should get a command pass window (see picture C)**

**\*\*\*If unsuccessful you will get a check device window (see picture D)**



4. Select the "Firmware Update" at any time. (see picture E)

This update is for the AT-HDSync only, not attached devices.



5. Once the Firmware Update window comes up, (see picture F) press the "Load BIN" button and select the most recent firmware file (downloaded from [atlona.com](http://atlona.com)). The file path should show in the white address bar.

6. Once the correct firmware displays, press the "burn" button.  
A blue progress bar will fill at the bottom of the Firmware Update window.
7. Once done, the firmware update is complete and you may close out of the program.