



# velocity<sup>TM</sup>

by Atlona

## Integration Note for Symetrix<sup>®</sup>

## Version Information

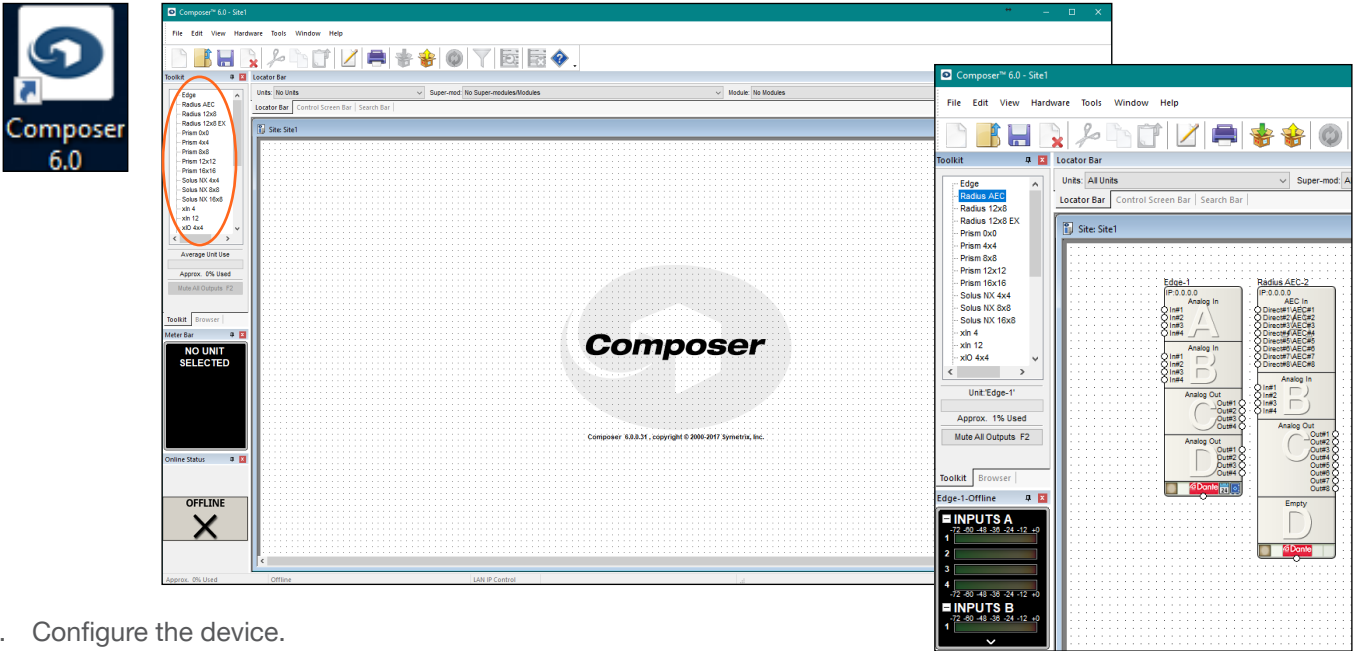
---

Version	Release Date	Notes
1	Apr 2018	Initial release
2	June 2020	Updated for new navigation in Velocity firmware 2.1.0

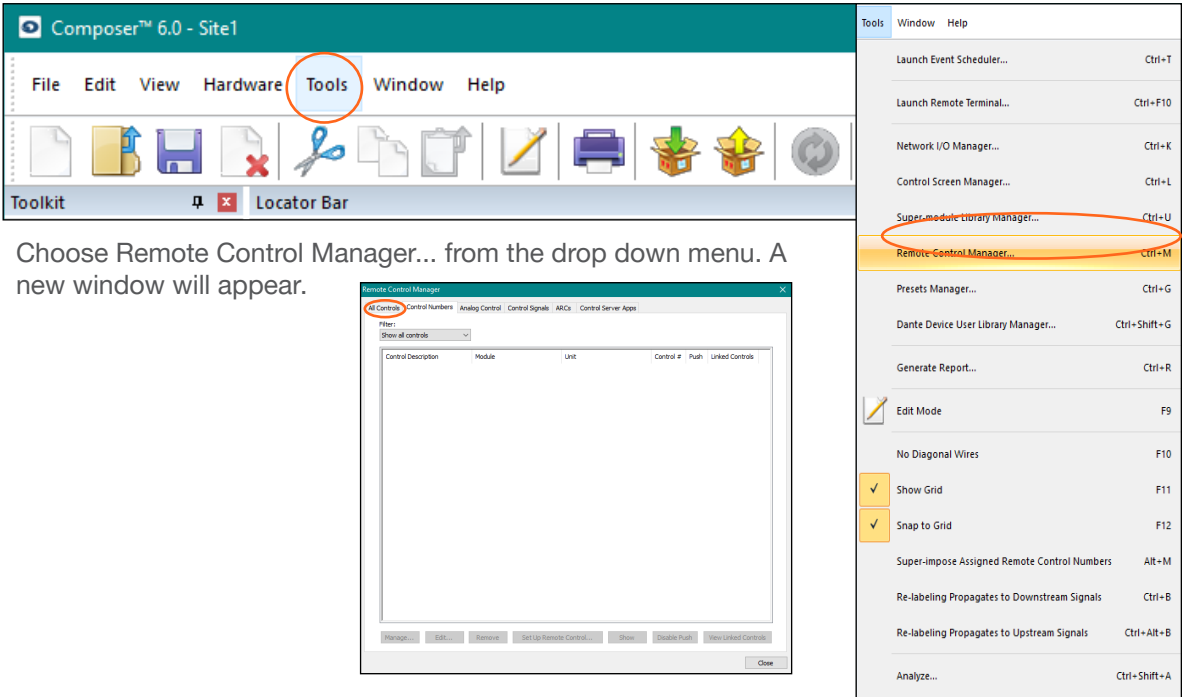
# Integration Note

Velocity is an easy to use control system, designed to ensure all devices can be integrated into a system without a large amount of programming needed. To make integration with Symetrix® products simpler, Velocity can import reports created using Composer.

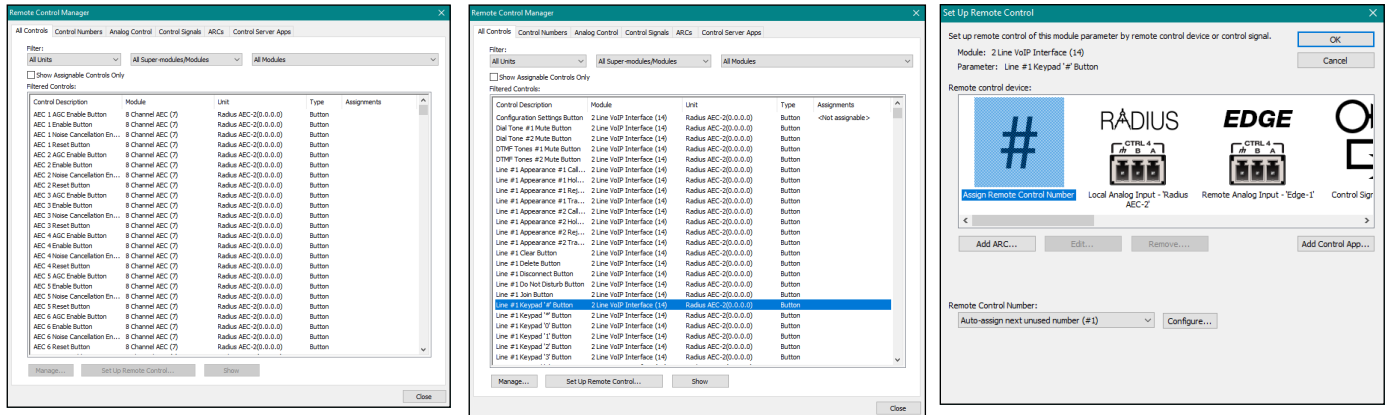
1. Open Composer.
2. Add the correct Symetrix device from the Toolkit to the site within composer.



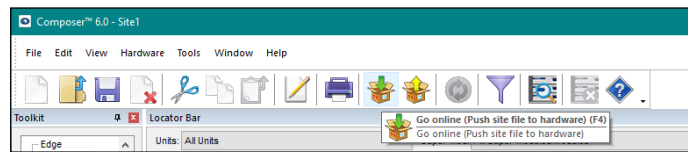
3. Configure the device.
4. Once the device is set up, select tools from the top navigation.



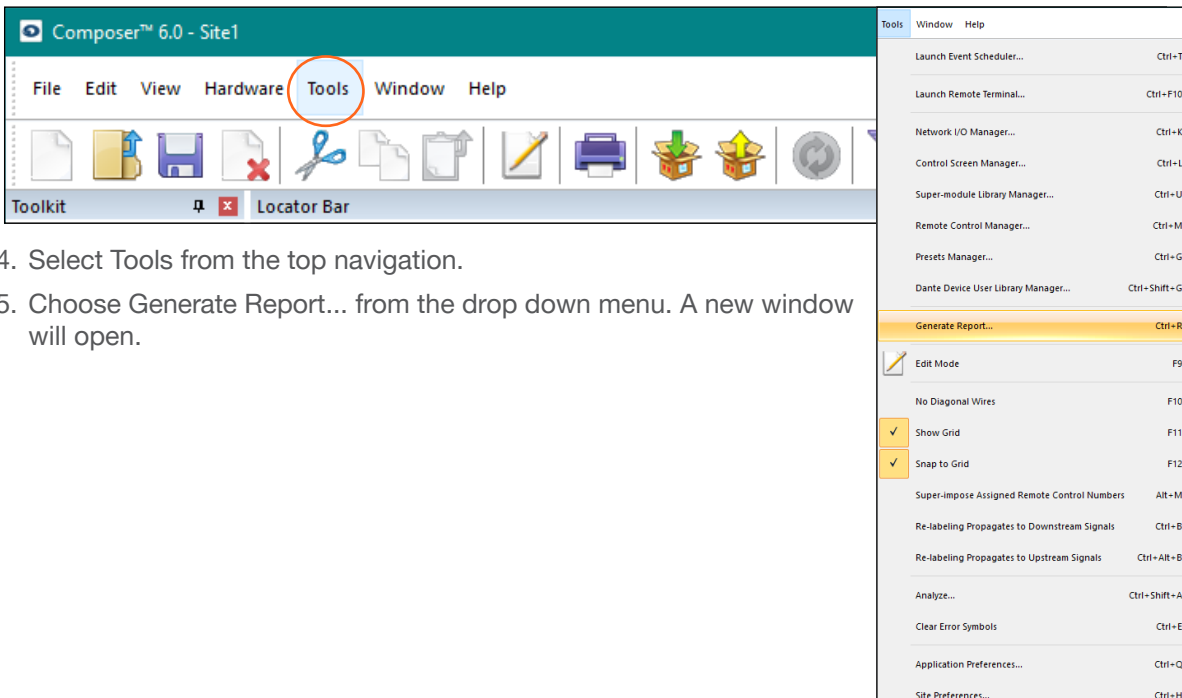
6. Select All Controls from the top navigation within the pop up window.



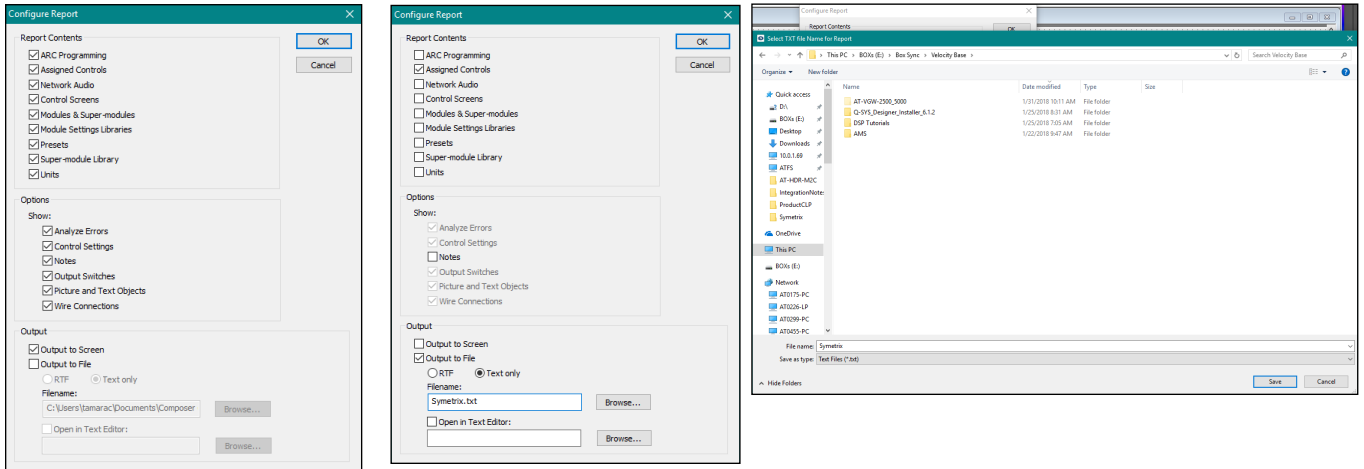
7. Select a control from the controls list and press the Set Up Remote Control... button. A new pop up will appear.
8. Select the Assign Remote Control Number icon.
9. Leave the Remote Control Number drop down on auto assign and press OK.
10. Repeat steps 7 through 9 until all needed controls have been assigned a remote control number.
11. Close the Remote Control Manager window by pressing the X or Close button.



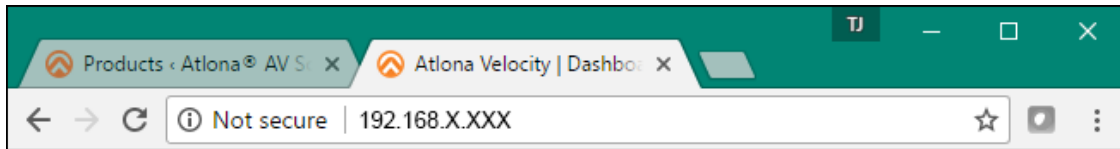
12. Select Go online (box icon with the green arrow).
13. Press OK on both pop ups as they appear.



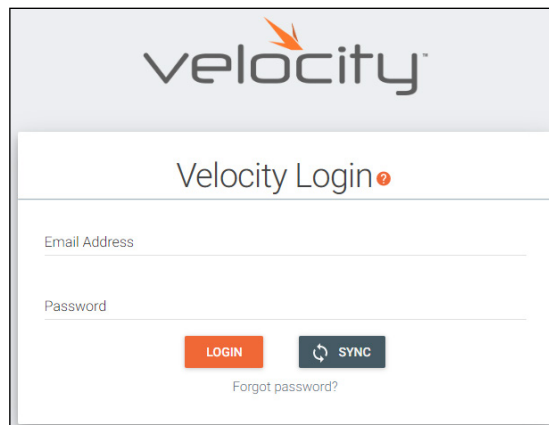
14. Select Tools from the top navigation.
15. Choose Generate Report... from the drop down menu. A new window will open.



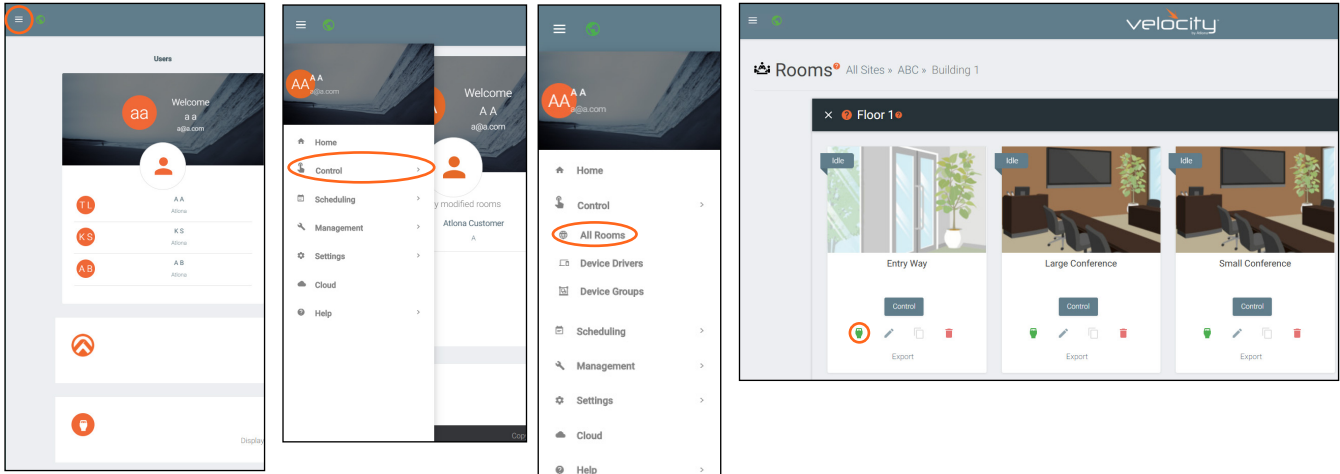
16. Deselect all options except for Assigned Controls from the Report Contents section.
17. Select Output to File within the output section.
18. Move the radial button to Text only.
19. Name the file and then press the browse button. A new window will open.
20. Choose an easy to find area on the local computer and select save.



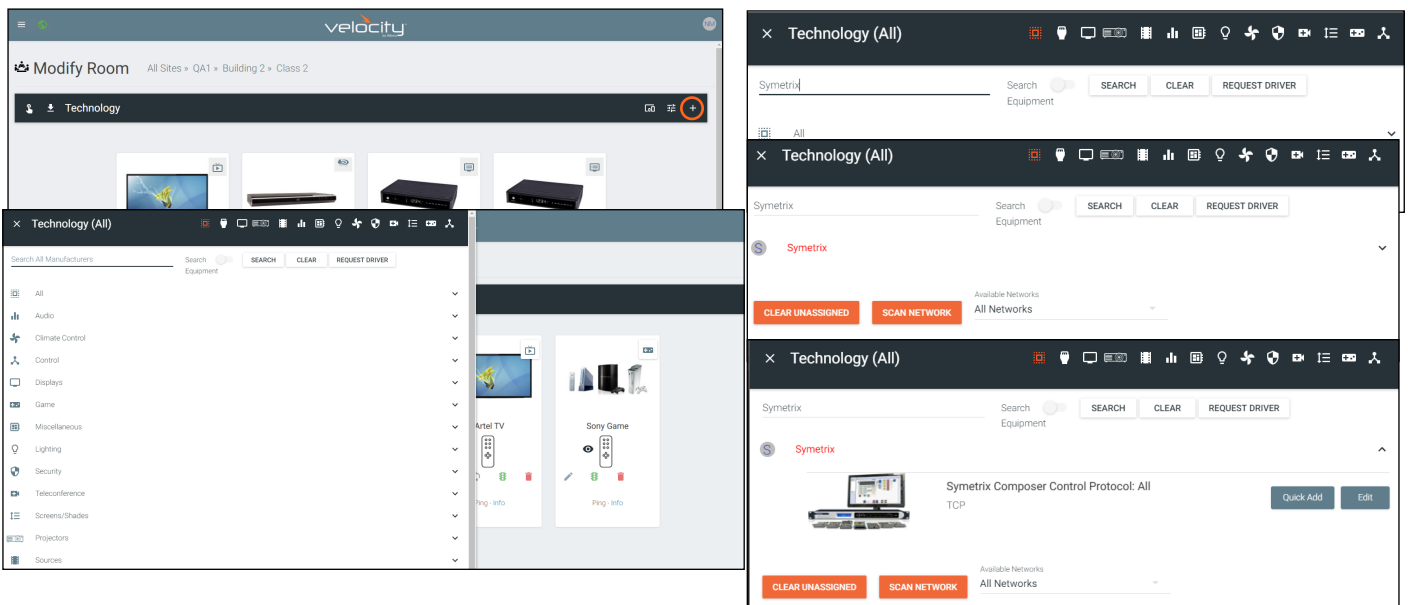
21. Open a browser on the local computer and inter in Velocity's IP address.
22. Log into Velocity

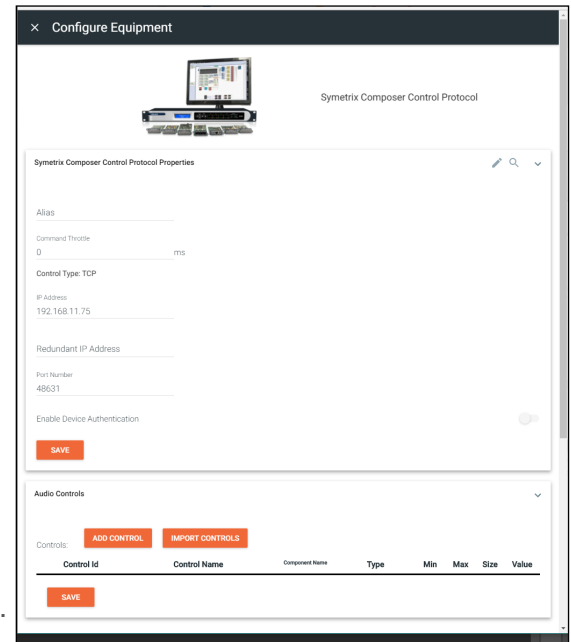
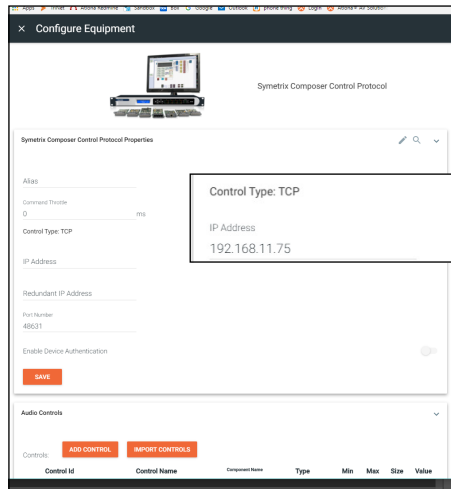


23. Locate the ≡ in the top left corner of the home page and left click to open the menu.
24. Select **Control** from the menu. New options will appear.
25. Select **All Rooms**. A new screen will open.
26. Select the **Edit Room Technology** button.

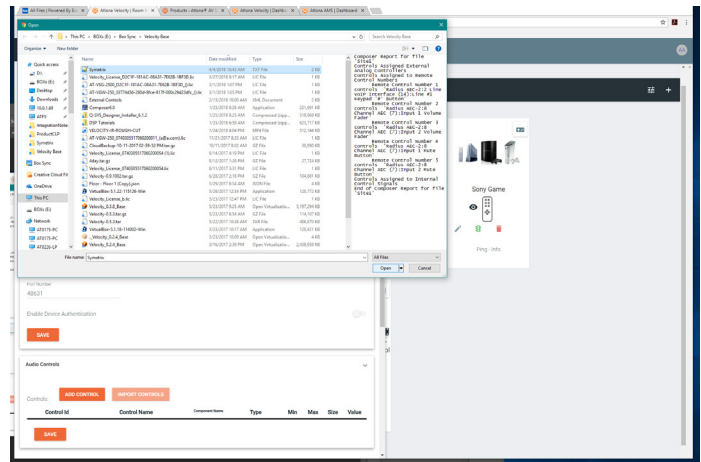
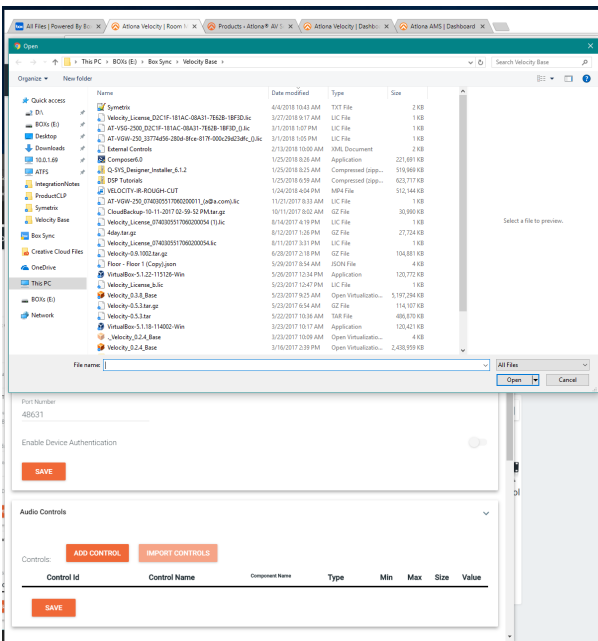


27. Select the + (add) button within the room. A new navigation will slide open.
28. Type Symetrix into the search field and press the SEARCH button.
29. Select the orange Symetrix option below the search field.
30. Press the “Quick Add” button next to Symetrix Composer Control Protocol: All. The device will appear in the main room screen.

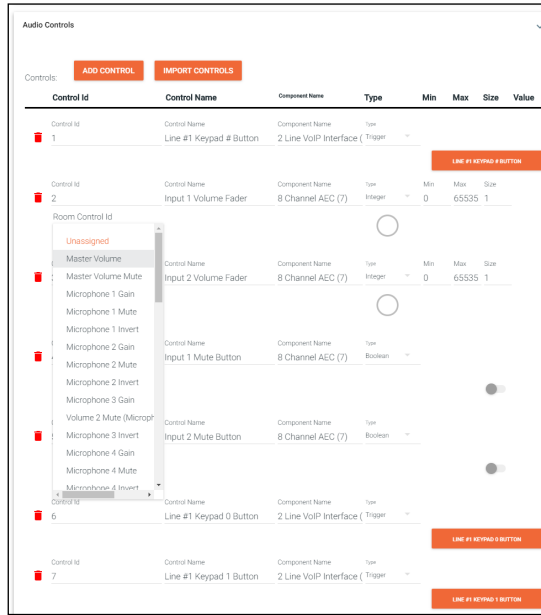
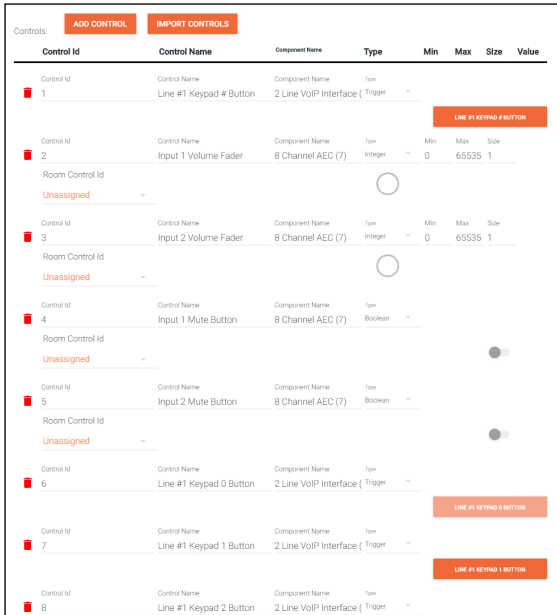




31. Select the Edit (pencil) button on the symetrix box. The Configure Equipment screen will slide open.
32. Type in the IP of the Symetrix device and press the save button.
33. Press the Edit button from the Symetrix device to reopen the Configure Equipment screen.
34. Select IMPORT IMPORT CONTROLS. A new window will open.

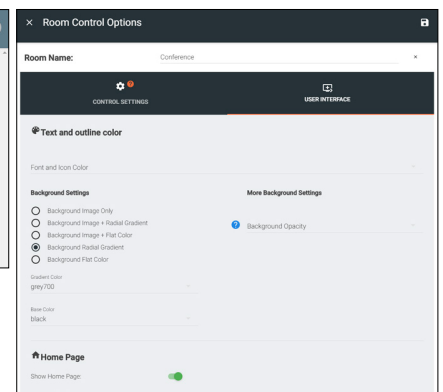
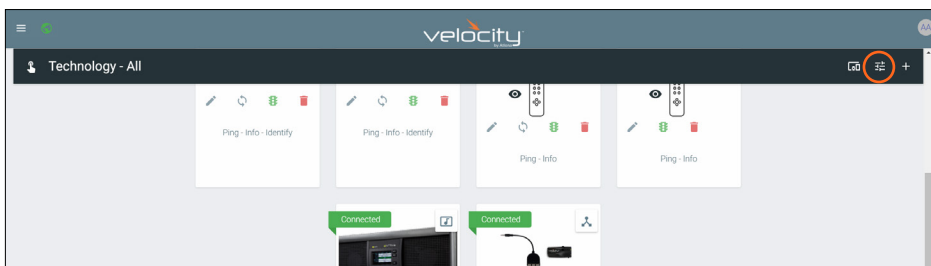


35. Select the previously saved Symetrix text only report file and press open. The controls will appear in the Audio Controls Section.

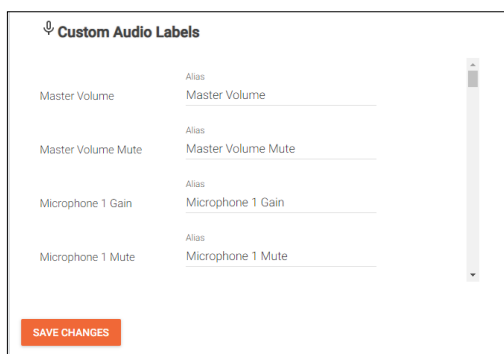


36. Press the save button to keep the imported commands. The Configure Equipment Screen will close.
  37. Each command will need to be assigned to a room control. Select the Unassigned drop down menu and select from the room commands list.
- IMPORTANT:** Master Volume and Master Volume Mute must be selected for commands first to ensure the controls function correctly.
38. Press the **SAVE** button to keep the current set up. The Symetrix device is now set up and the room control can be launched using the hand in the top left corner of the screen

**NOTE:** The room commands can be renamed within the Room Control Options.



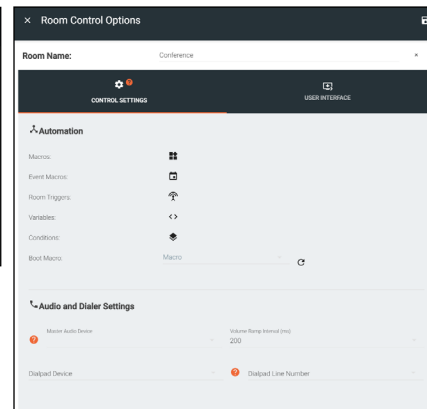
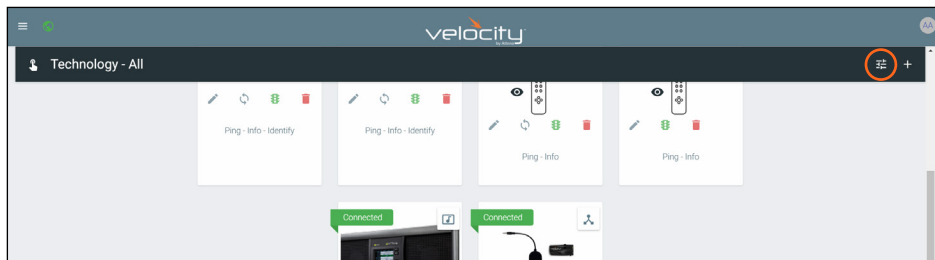
1. Select **Room Control Options** from the top right corner of the room. A new screen will slide open on the left side of the page.
2. Select **User Interface** from the top navigation.
3. Scroll down to the bottom of the screen.



4. Enter an alias for each command. If the room does not have enough of a certain type of command (such as volume) a different command can be given an alias that will display in the room commands list.



**NOTE:** If the Symetrix Device has VoIP controls imported, the dialpad must be selected inside the room control options under the **User Interface** selection before it can be used.



1. Select **Room Control Options** from the top right corner of the room. A new screen will slide open on the left side of the page.
2. Select Symetrix Composer from the Dialpad Device drop down menu.
3. Select the Dialpad Line Number to select the line the VoIP goes through.
4. \*Optional\* Check the Visible on Home Page box next to Dialer.
5. Press the Apply Settings (floppy disc icon) at the top of the Room Control Options to save all the changes. The dialer will appear in the navigation on the room control page or the home page when selected.

Master Audio Device	Volume Ramp Interval (ms)
	200
Dialpad Device	Dialpad Line Number
Symetrix Composer Control Protocol	1

Control Action:	Home Screen	Custom Label:	Custom Icon:
ROOM ON	<input checked="" type="checkbox"/>		Default icon
ROOM OFF	<input type="checkbox"/>		Default icon
Control Pages:	Start Page	Home Screen	Can Navigate
VIDEO	<input checked="" type="checkbox"/>	<input checked="" type="checkbox"/>	Default icon
MACROS	<input type="checkbox"/>	<input type="checkbox"/>	Default icon
DIALER	<input type="checkbox"/>	<input type="checkbox"/>	Default icon
VIDEO CONFERENCE	<input type="checkbox"/>	<input type="checkbox"/>	Default icon
(Dial Start Page)			
Navigation Macros			

