

velocity™ by Atlona

Integration Note for

Sennheiser TCC2

with AT-HDVS-CAM

Version Information

| Version | Release Date | Notes |
|---------|--------------|-----------------|
| 1 | Oct 2021 | Initial release |

Integration Note

Velocity is an easy to use control system, designed to ensure all devices can be integrated into a system without a large amount of programming needed. Velocity provides an easy way to set up and control an AT-HDVS-CAM with a Sennheiser TeamConnect Ceiling 2 (TCC2).

Before integrating the devices with Velocity, the devices and Velocity must had basic set up.

Set up and mounting instructions for the AT-HDVS-CAM can be found at <https://atlon.com/product/hdvs-cam/> under the resources tab.

Set up and mounting instructions for the Sennheiser TCC2 can be found at <https://en-us.sennheiser.com/tcc2>.

Set up instructions for Velocity Software can be found at <https://atlon.com/pdf/manuals/Velocity.pdf>. Depending on the Velocity device mounting/installation can be found on the product SKUs page.

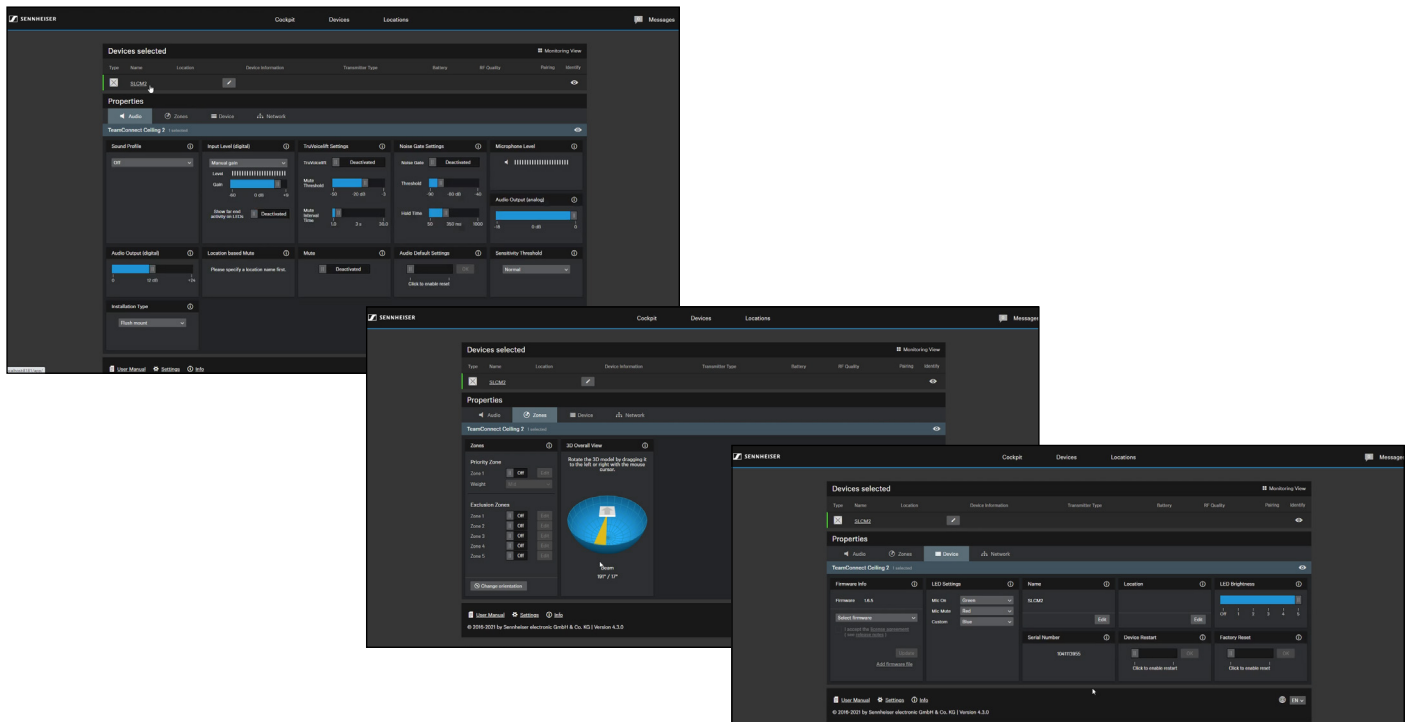
- AT-VGW-SW: <https://atlon.com/product/at-vgw-sw/>
- AT-VGW-HW: <https://atlon.com/product/vgw-hw/>
- AT-VTPG-1000VL: <https://atlon.com/product/vtpg-1000vl/>

AT-HDVS-CAM

- AT-HDVS-CAM should be mounted at its permanent location.
- All location preset should be programmed in, using either the remote control or webUI.
- AT-HDVS-CAM should have an active network connection and be on the same network as Velocity and the TCC2.
- Notate the IP of the AT-HDVS-CAM for integration within Velocity.

Sennheiser TeamConnect Ceiling 2 (TCC2)

- The TCC2 should be mounted at its permanent location.
- The TCC2 should have an active network connection and be on the same network as Velocity and AT-HDVS-CAM.
- Basic audio, device, and zone settings should be set up through the TCC2 UI.
- Notate the IP of the TCC2 for integration within Velocity.

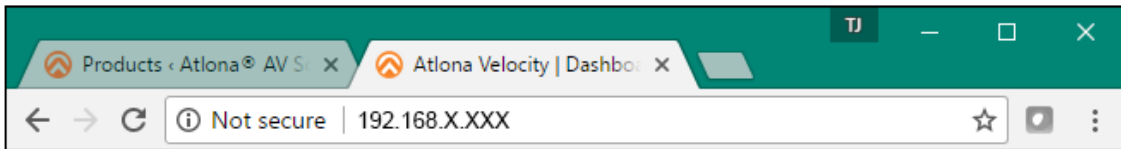


Velocity

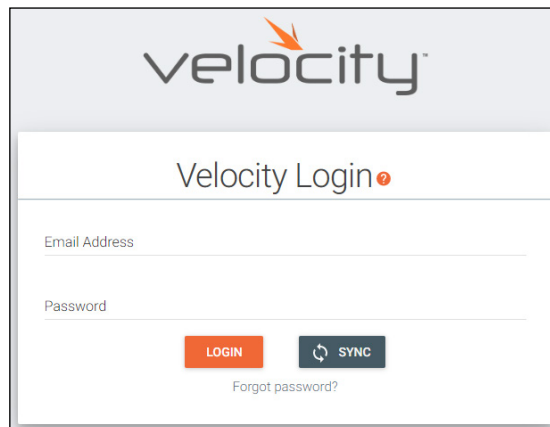
- Velocity should be on the latest firmware.
- Site, building, and room should be set up.
- Velocity should have an active network connection and be on the same network as TCC2 and AT-HDVS-CAM.
- Notate the IP of Velocity for set up.

Velocity Setup and Integration

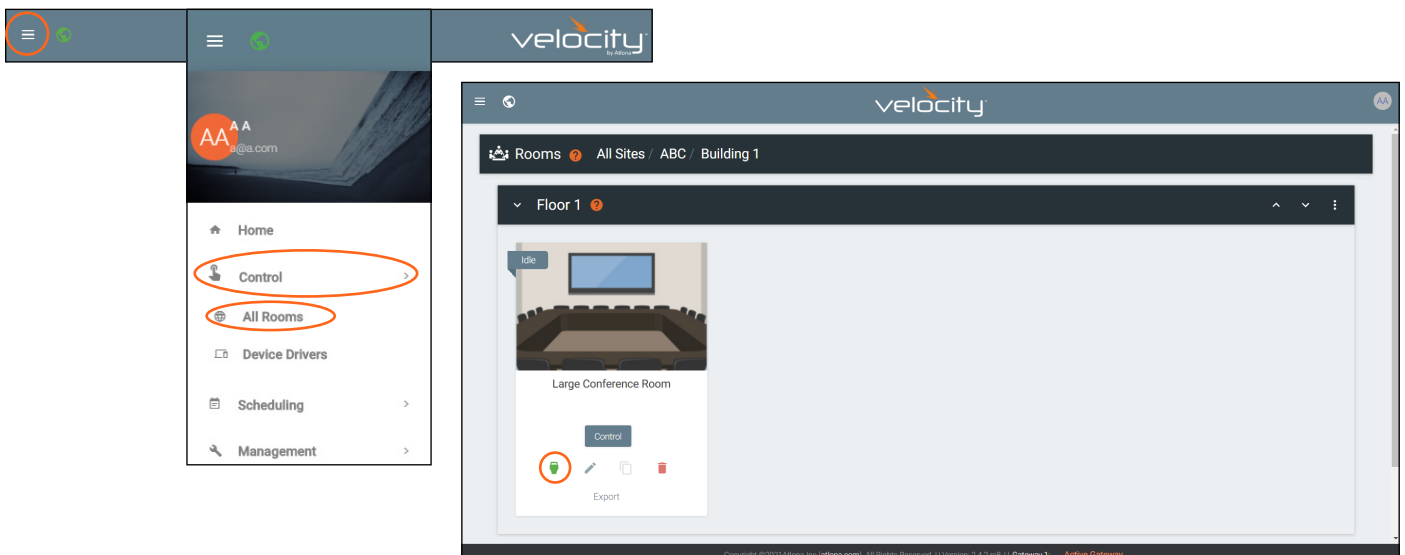
1. Once all the devices are on the network and their IPs found, open a browser on a local network computer.
2. Type Velocity's IP address into the current address bar.



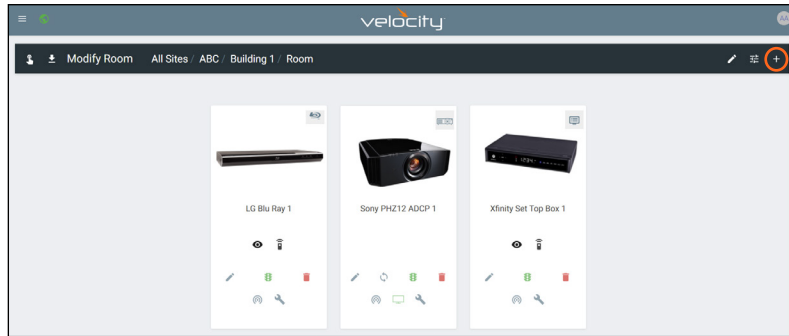
3. Log into Velocity. A new screen will open.



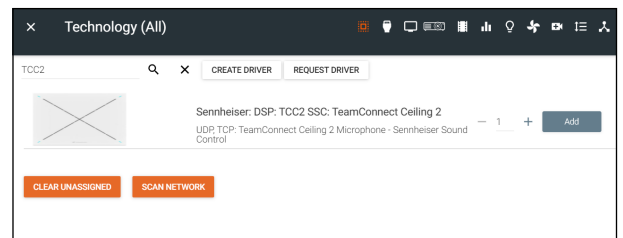
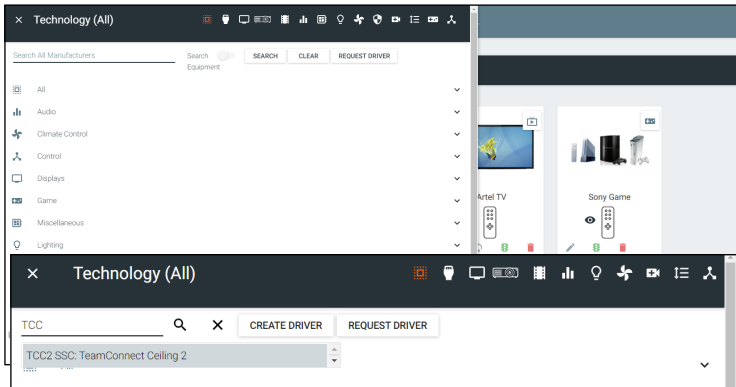
4. Select the = button at the top right corner to open the navigation.
5. Select **All Rooms** from the control menu.



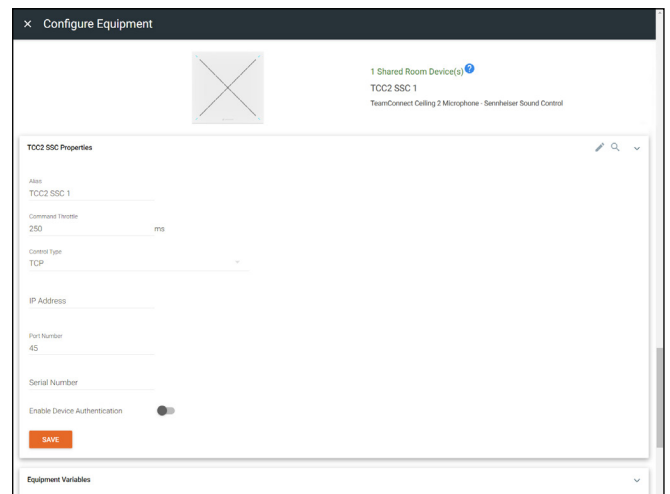
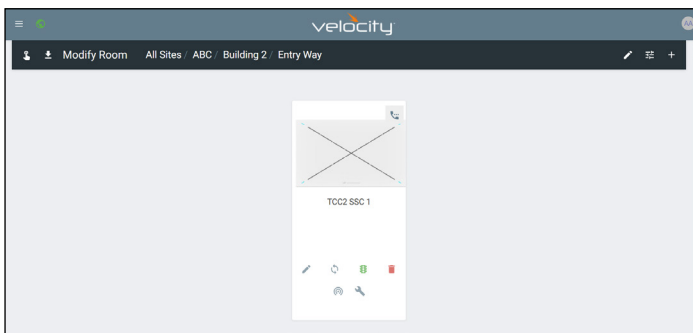
6. Select **Edit Room Technology** for the room the TCC2 will be located.
7. Once the Modify Room page is open, select the + button. A new navigation will slide open.



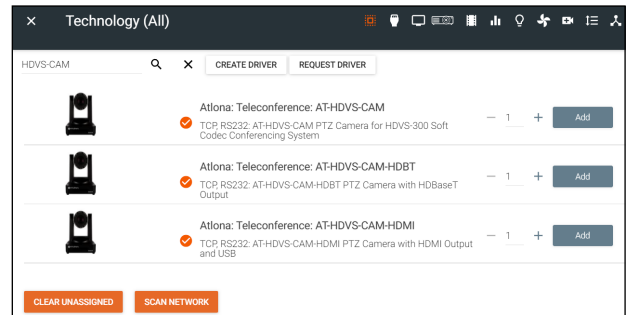
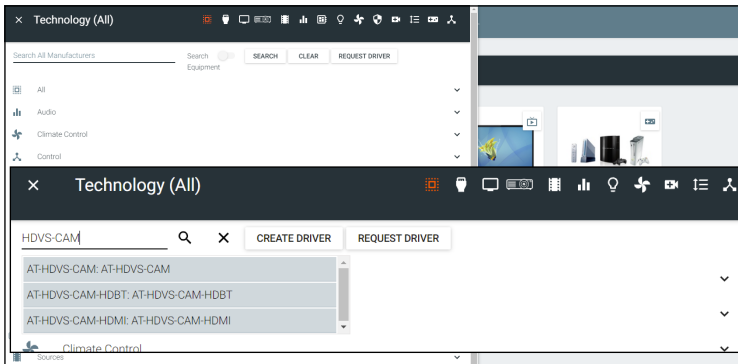
8. Type Sennheiser or TCC2 into the search field and press enter or select TCC2 SSC TeamConnect Ceiling 2 from the drop down.
9. Select the **Add** button next to Sennheiser: DSP: TCC2 SSC: TeamConnect Ceiling 2. The TCC2 tile will appear in the room.



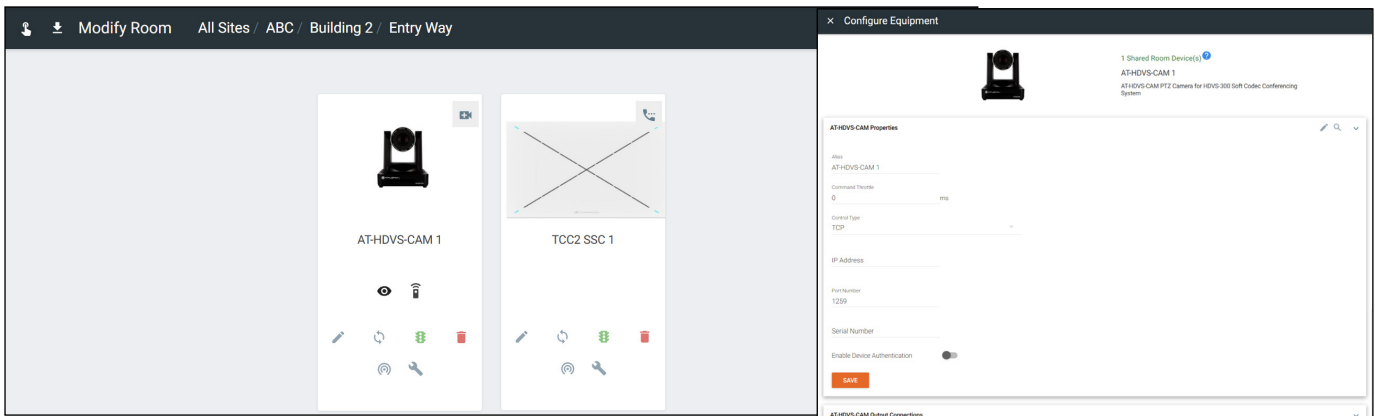
10. Click outside the device menu or select the X next to Technology to close the menu.
11. Select the edit button on the Sennheiser tile. A new menu will slide open on the left side of the screen.



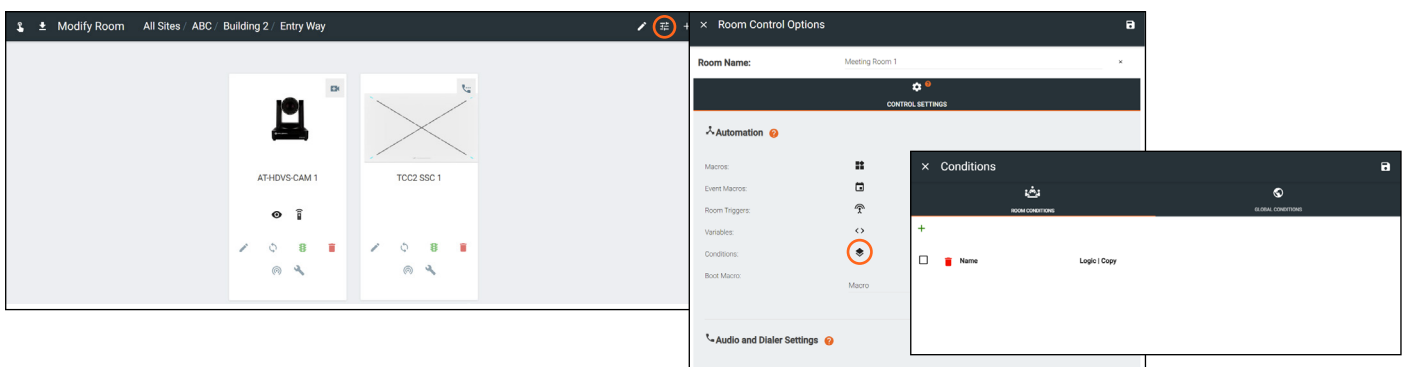
12. Enter the Command Throttle (in milliseconds), Control Type, IP address, Port number, and Serial (optional).
13. Select **SAVE**. The edit screen will close.
14. Now that the TCC2 is set up, the HDVS-CAM will need to be set up. Select the + button in the top right.



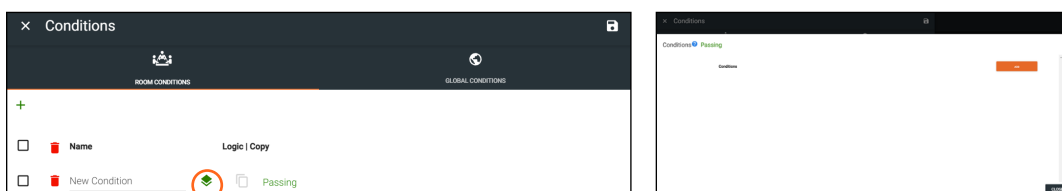
15. Type HDVS-CAM into the search field and press enter or select AT-HDVS-CAM: AT-HDVS-CAM from the drop down menu.
16. Select the ADD button next to the AT-HDVS-CAM. The AT-HDVS-CAM tile will appear in the room.
17. Click outside the device menu or select the X next to Technology to close the menu.
18. Select the edit button on the AT-HDVS-CAM tile. A new menu will slide open on the left side of the screen.
19. Enter the Command Throttle (in milliseconds), Control Type, IP address, Port number, and Serial (optional).
20. Select **SAVE**. The edit screen will close.



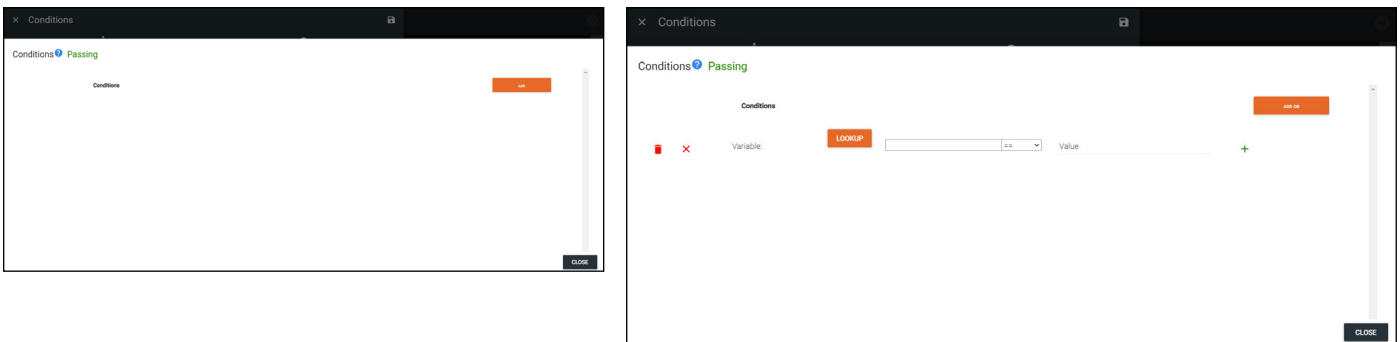
21. Select Room Options at the top right side of the page. A menu will slide open on the left side of the screen.



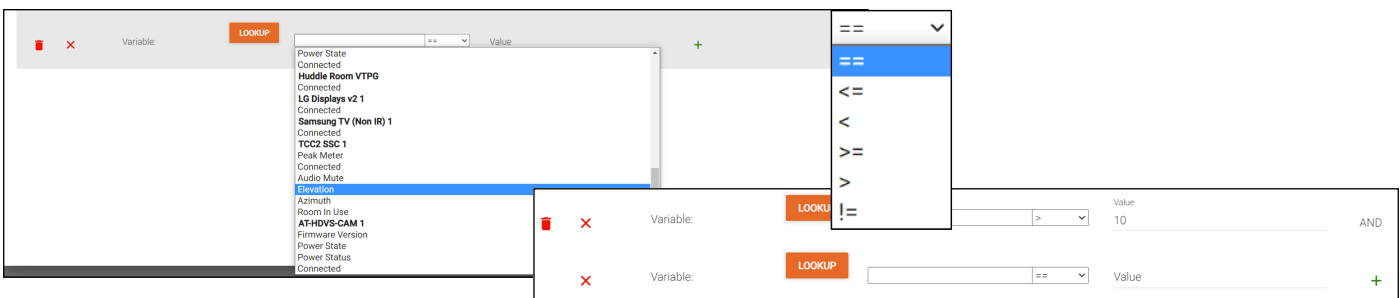
22. Select Conditions from the Automation section. A new menu will take over.
23. Conditions will be used to automate the camera moving to where a speaker is. To do this, add a new condition using the green + button on the top left.



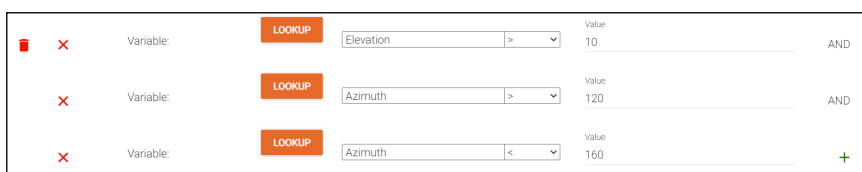
24. Select the Conditions button (green stacked papers). A new menu will open.



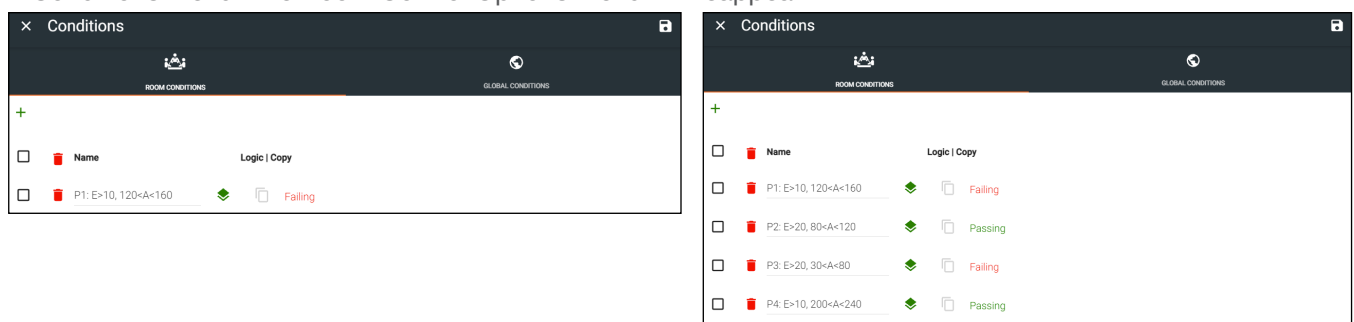
- 25. Select the ADD button. New options will appear.
- 26. Select the first drop down menu. This will display a list of options.
- 27. Select Elevation from under the TCC2 SSC 1 section.
- 28. Next select the > sign from the second drop down menu.
- 29. Fill in the Elevation value of the preset 1 camera height position.



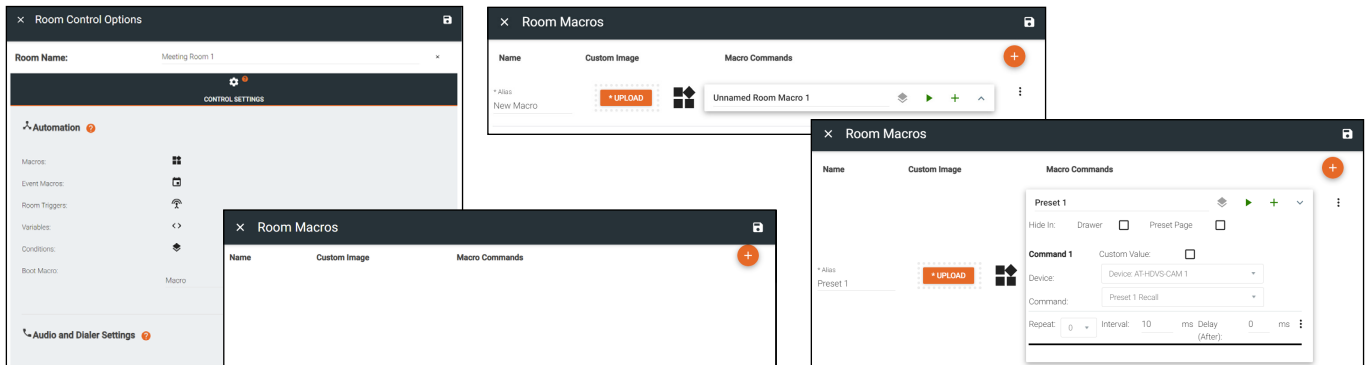
- 30. Select the + button next to the value to create another and value.
- 31. Select Azimuth from the first drop down. Azimuth will require a greater than and a less than value. They can be done in any order.



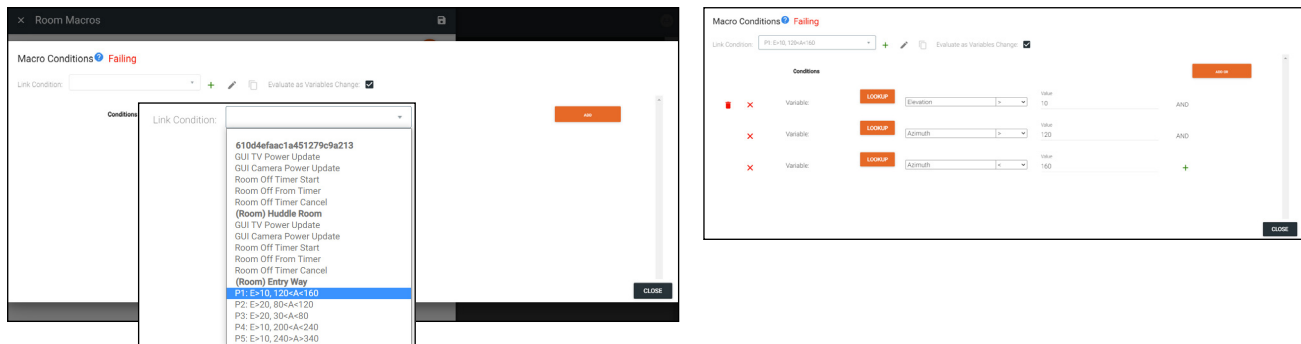
- 32. Set two rows of Azimuth values to provide the condition with the direction for the horizontal camera preset position.
- 33. Select the CLOSE button in the bottom left corner.
- 34. Once back in the Conditions menu, rename the condition so it will be easy to remember.
- 35. Repeat for as many preset conditions that are need.
- 36. Press the save (disk) button in the top right corner of the menu and then press the X in the left corner to close the Conditions menu. The Room Control Options menu will reappear.



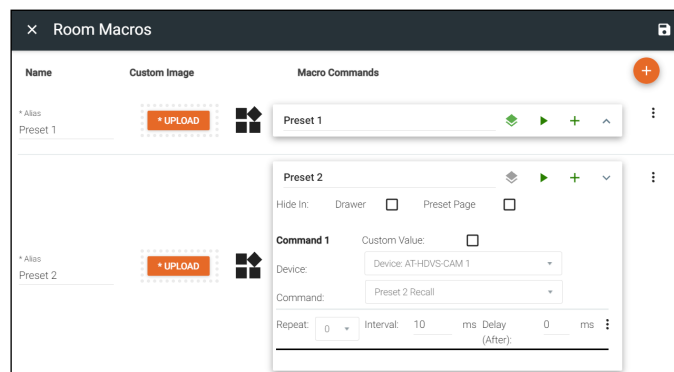
37. Select Macros from the Automation section. A new menu will open.
38. Select the orange + circle in the top right corner of the screen. New options will appear.
39. Fill in the Alias and Macro command names as Preset 1.
40. Select the + button on the Macro Commands box. New options will open.
41. Since this will call in the HDVS-CAM presets set during installation, select AT-HDVS-CAM as the Device.
42. Select Preset 1 Recall as the command.
43. Press the conditions button at the top of the Macro Commands field. A new screen will open.



44. Select the Link Condition drop down.
45. Select the previously created Preset 1 condition that was named in step 34. The conditions will appear below the drop down menu.
46. Select close to return to the macro menu.



47. Repeat the Macro steps until all presets are created.



The room is now set up for the AT-HDVS-CAM and Sennheiser to adjust video positioning automatically.

Copyright, Trademark, and Registration

© 2021 Atlona Inc. All rights reserved. "Atlona" and the Atlona logo are registered trademarks of Atlona Inc. Pricing, specifications and availability subject to change without notice. Actual products, product images, and online product images may vary from images shown here.

All other trademark(s), copyright(s), and registered technologies mentioned in this document are the properties of their respective owner(s).