

*OmniStream*TM

by Atlona

Integration Note for

 **Symetrix**

Version Information

| Version | Release Date | Notes |
|---------|--------------|-----------------|
| 1 | 06/18 | Initial release |

Integration Note

Atlona OmniStream products support AES67 audio which delivers high-performance LPCM audio streaming over IP networks. Symetrix® Composer provides a visual approach to device configuration and routing end-to-end audio paths, making AES67 transport stream setup simple and effortless.

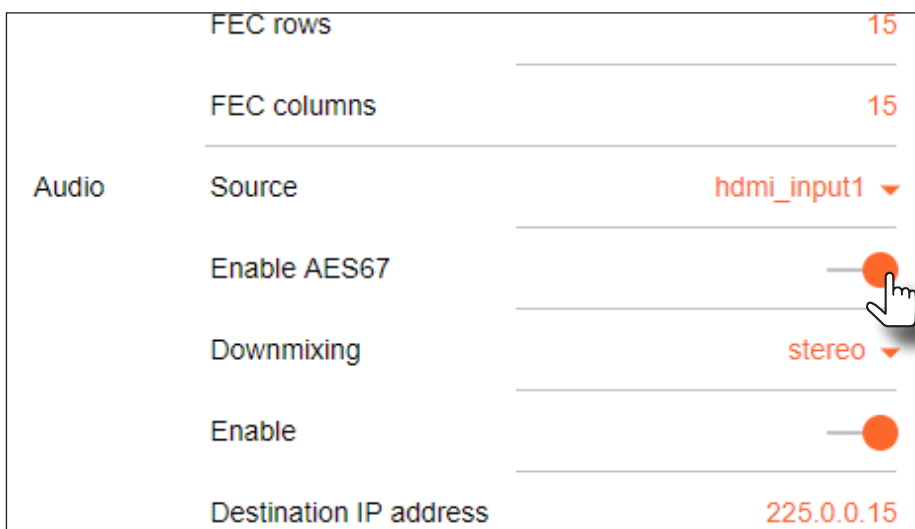
Before configuring the DSP, AES67 must be enabled on the OmniStream encoder.

Enabling AES67 in OmniStream

1. Launch a web browser.
2. Enter the IP address of the OmniStream encoder in the address bar of the web browser.
3. Enter the username and password at the login screen. The default login credentials are as follows. Note that login credentials are case-sensitive.

Username: **admin**
 Password: **Atlona**

4. Click the **Continue** button, or press the ENTER key, to continue.
5. Click **Session** in the menu bar.
6. Locate the **SAP** section and click the **Enable** toggle switch. When enabled, the toggle switch will be orange.
7. In the **Audio** section, do the following:
 - a. Click the **Source** drop-down list and select the desired source.
 - b. Click the **Enable AES67** toggle switch to enable AES67. When enabled, the toggle switch will be orange.
 - c. Click the **Downmixing** drop-down list and select **stereo**.
8. Click the **SAVE** button within the **Session** section.

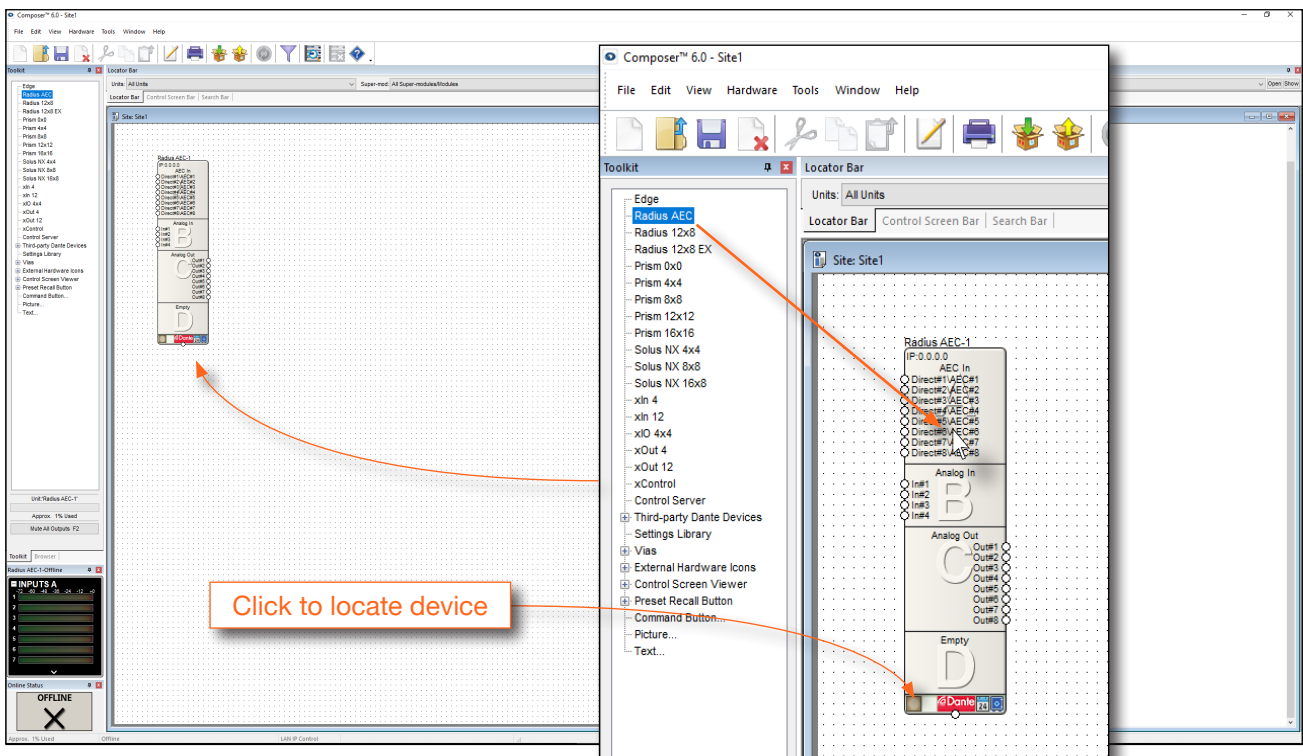


Once AES67 is enabled on the OmniStream encoder, the DSP can be configured. The procedure, beginning on the next page, illustrates how to configure a Symetrix DSP with a dual-channel OmniStream Pro encoder (AT-OMNI-112). Note that the following procedure is applicable to all Dante-enabled Symetrix DSP products that are managed by Composer.

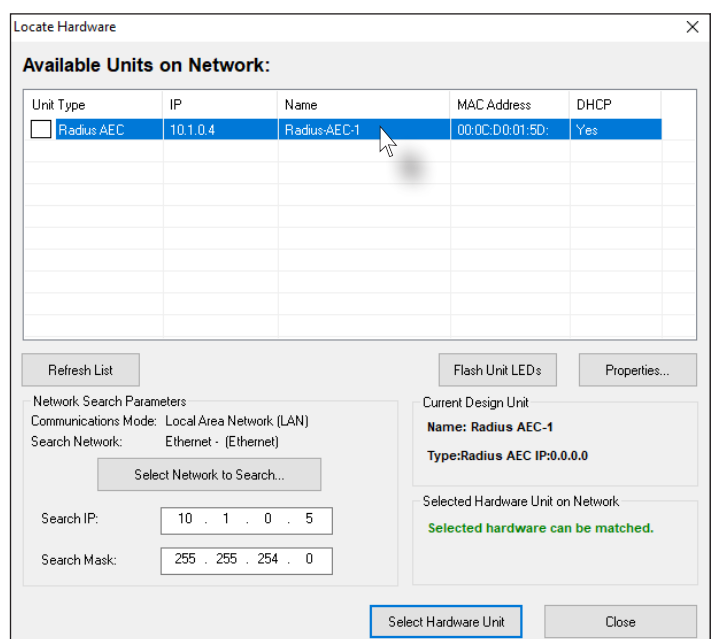
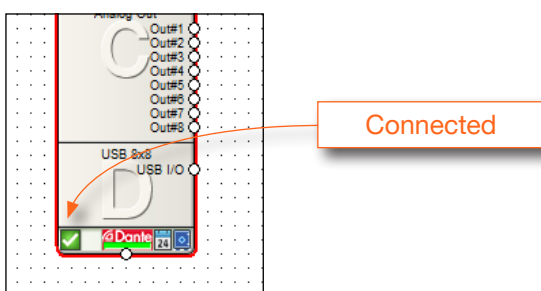
Configuring Symetrix Composer

The following example shows how to configure the Symetrix RADIUS AEC DSP using one receiver and one transmitter.

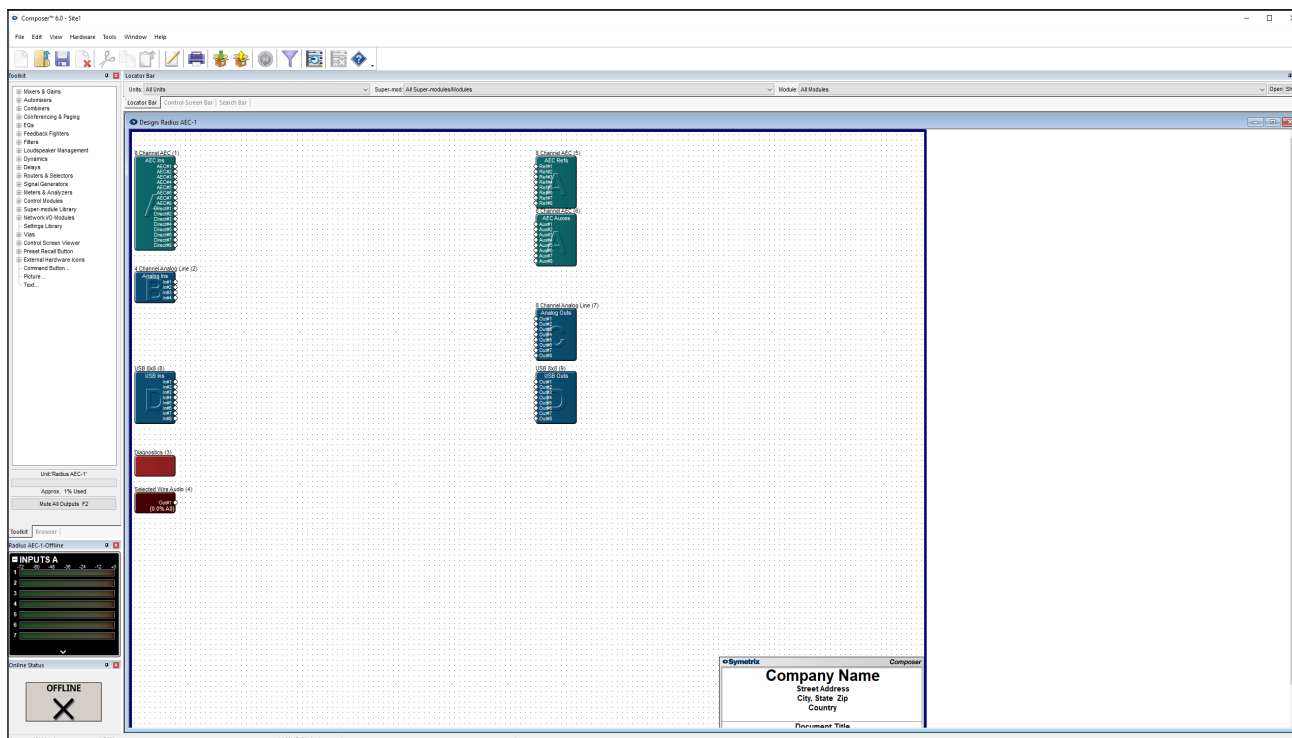
1. Make sure that OmniStream devices, DSP, and the computer which is running Composer, are connected to the same network switch.
2. Launch Symetrix Composer.
3. Click and drag the DSP from the **Toolkit** window, on the left side of the screen, to the **Site** window. Release the mouse button to place the device in the **Site** window.



5. Left-click on box in the lower-left corner of the icon to display the **Locate Hardware** dialog box.
6. Click the DSP in the list box.
7. Click the **Select Hardware Unit** button. If a connection is made, a green check mark will appear in the lower-left corner of the DSP, in the **Site** window.



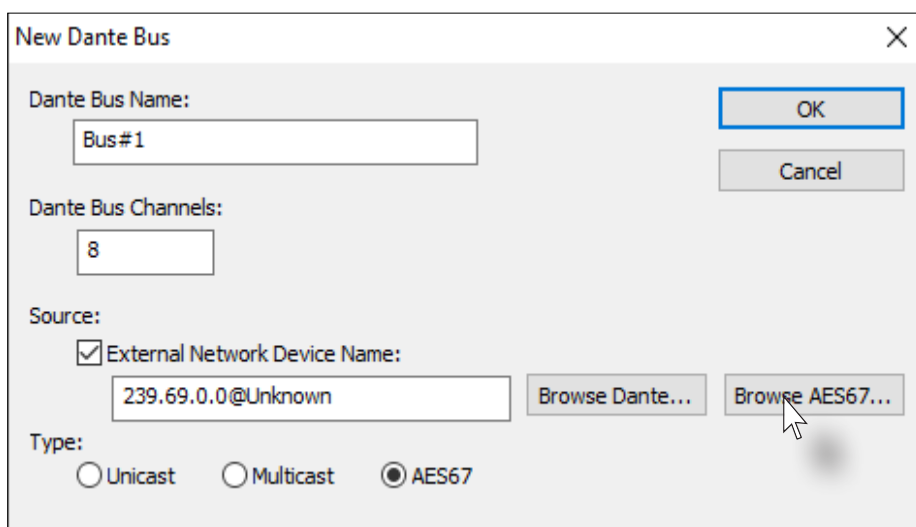
8. Double-click on the DSP to open the **Design** window.



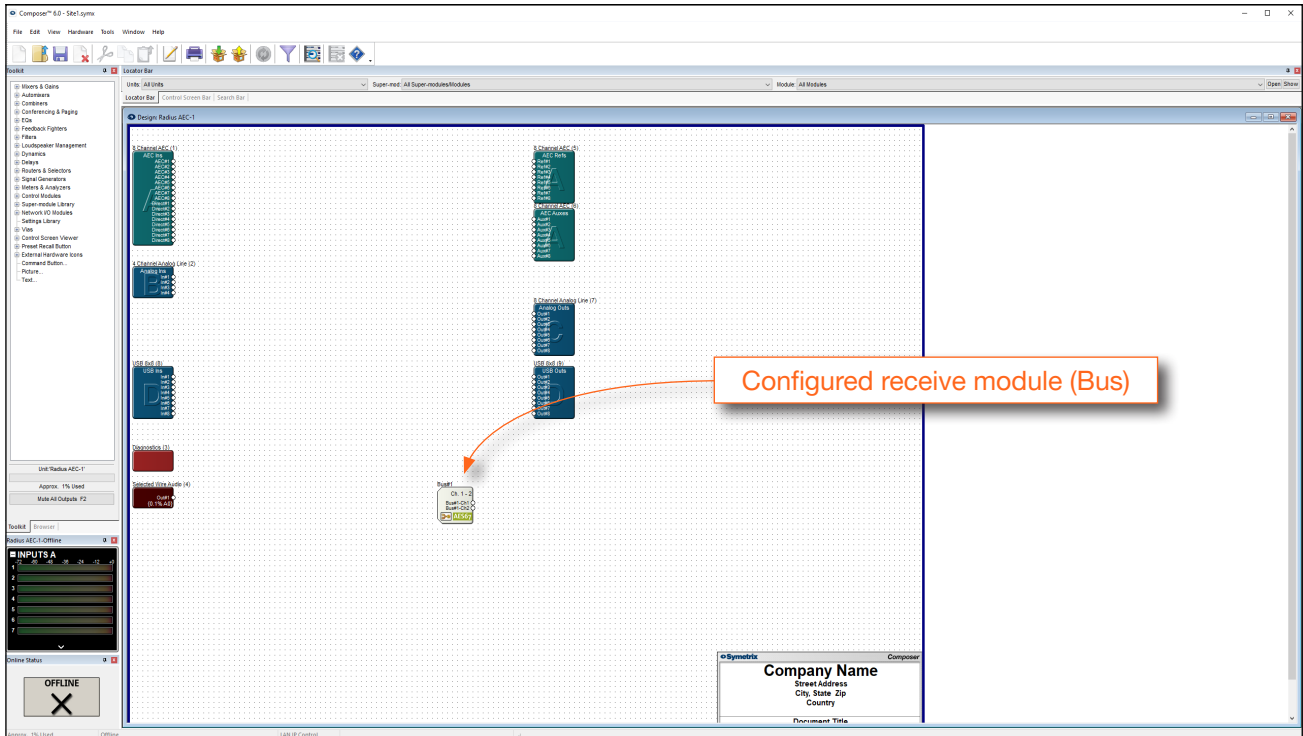
9. Click and drag a receive module to the **Design** window. In this example, the selected receive module will be found under **Network I/O Modules > Receive Modules > New Network Receive Module**, in the **Toolkit** window. When the receive module is added to the **Design** window, the **Network Receive Module Properties** dialog box will be displayed.

10. Click the **Add New Bus...** button.

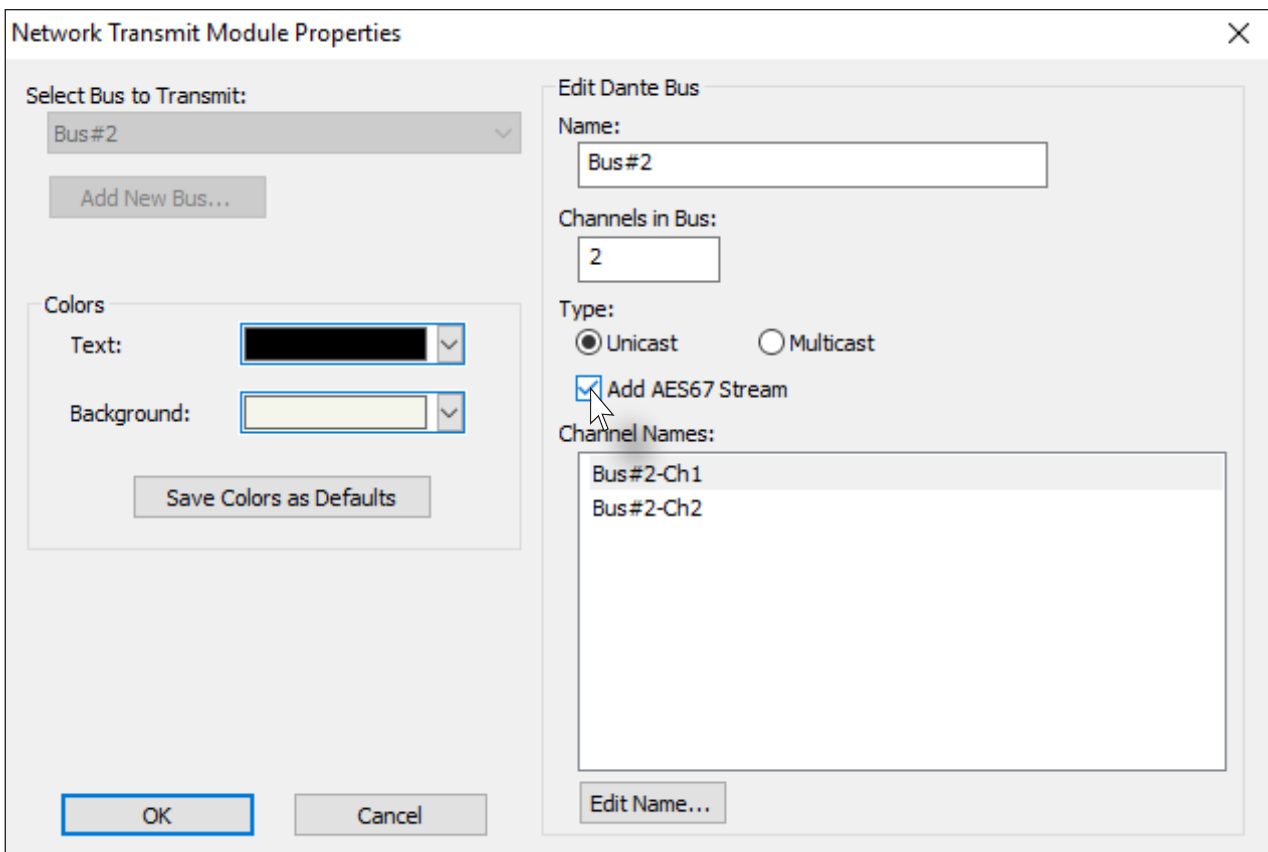
11. The **New Dante Bus** dialog box will be displayed. Click the **External Network Device Name** check box, then click the **AES67** radio button.



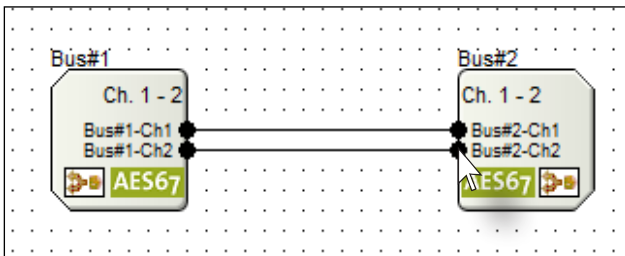
12. Click **Browse AES67...**



17. Click and drag a transmit module from **Network I/O Modules > Transmit Modules > New Network Transmit Module**, in the **Toolkit** window, to the **Design** view. The Network Transmit Module Properties dialog box will be displayed.
18. Check the **Add AES67 Stream** check box.

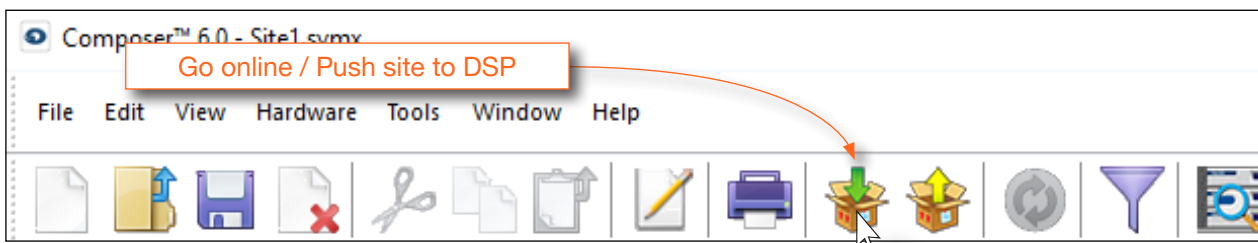


19. Connect the channel nodes on the transmit module to the receive module.

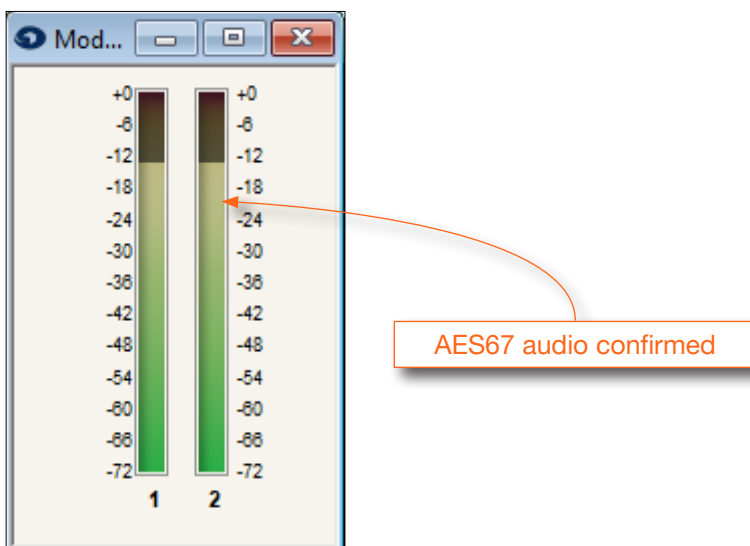


20. Save the site file.

21. Push the site to the DSP by clicking the **Go online (Push site file to hardware)** button in the toolbar, at the top of the screen, or by pressing **F4** on the computer keyboard.



22. Double-click on the transmit module to display the VU meter dialog. The AES67 audio signal should be displayed in the VU meter dialog. Repeat this process for the receive module to make sure both input and output audio signals are being registered by Symetrix Composer.



23. The configuration process is complete.

