

# velocity™ by Atlona

## Integration Note for Biamp® Tesira

## Version Information

---

Version	Release Date	Notes
1	May 2018	Initial release
2	June 2020	Updated for new navigation in Velocity firmware 2.1.0

## Features Supported

---

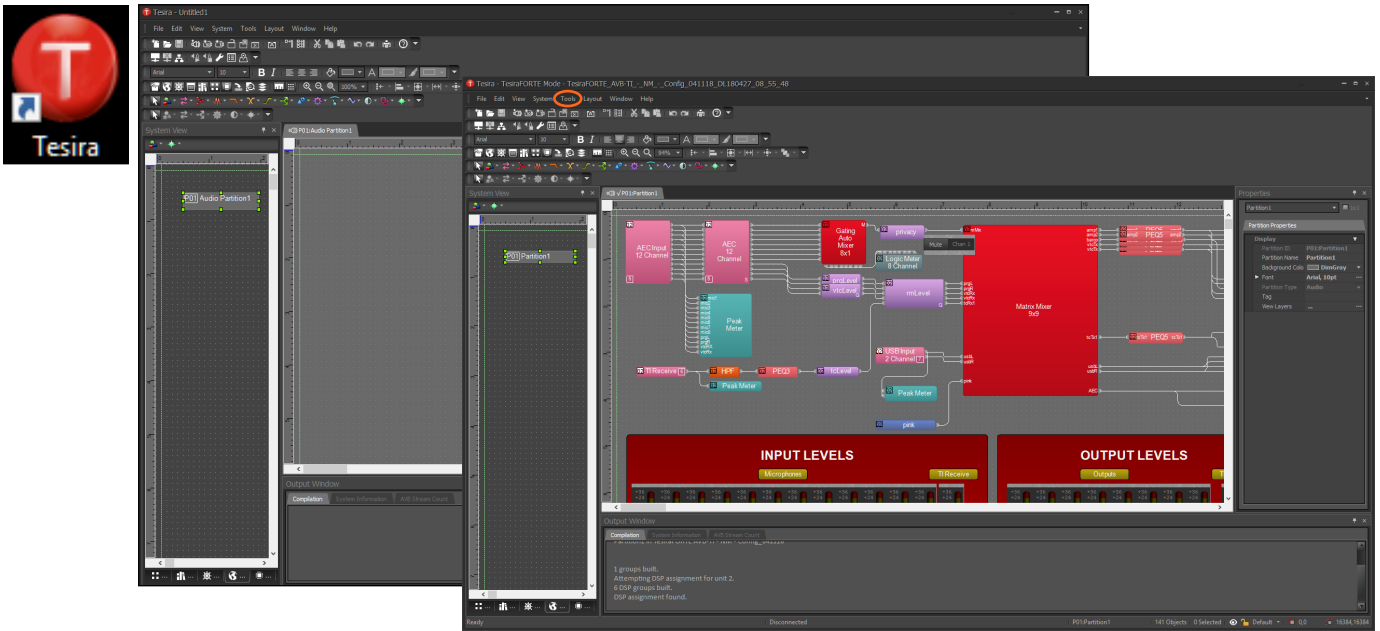
### Velocity 1.4.1 and above

- All control blocks with level & mute control
- TI and VoIP control & status
- Loading & recall of presets

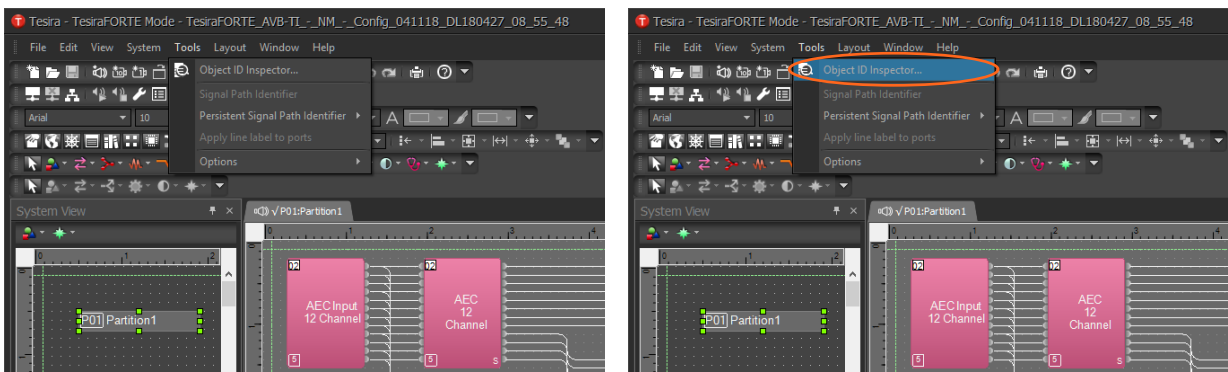
# Integration Note

Velocity is an easy to use control system, designed to ensure all devices can be integrated into a system without a large amount of programming needed. To make integration with Biamp® products simpler, Velocity can import .csv files created using Tesira software.

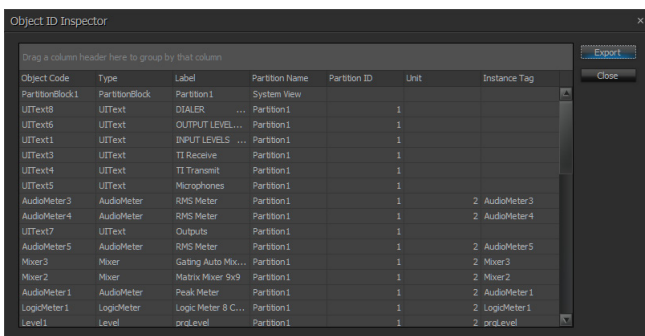
1. Open Tesira software.
2. Open a DSP file.



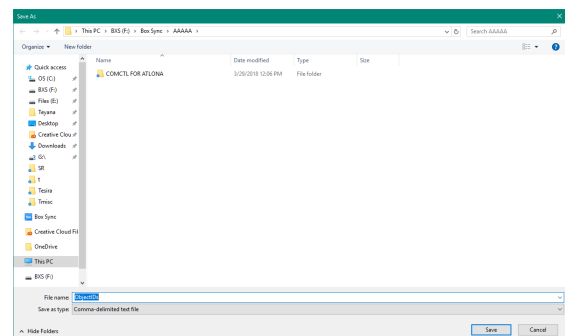
3. Once the blocks are set up, select **Tools** from the top navigation.
4. Select **Object ID Inspector...** from the drop down menu. A new pop up window will appear.



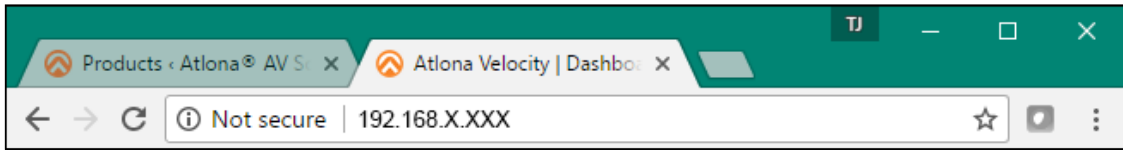
5. Select the **Export** button on the right side of the window. A new pop up will appear.
6. Save the .csv file to an easy to find area on the local computer.



Object Code	Type	Label	Partition Name	Partition ID	Unit	Instance Tag
PartitionBlock1	PartitionBlock	Partition1	System View			
UIText8	UIText	DIALER	Partition1		1	
UIText6	UIText	OUTPUT LEVELS	Partition1		1	
UIText1	UIText	INPUT LEVELS	Partition1		1	
UIText3	UIText	TI Receive	Partition1		1	
UIText4	UIText	TI Transmit	Partition1		1	
UIText5	UIText	Microphones	Partition1		1	
AudioMeter3	AudioMeter	RMS Meter	Partition1		2	AudioMeter 3
AudioMeter4	AudioMeter	RMS Meter	Partition1		2	AudioMeter 4
UIText7	UIText	Outputs	Partition1		1	
AudioMeter5	AudioMeter	RMS Meter	Partition1		2	AudioMeter 5
Mixer3	Mixer	Gain/Auto Mix...	Partition1		1	Mixer3
Mixer2	Mixer	Main/Mixer 9x9	Partition1		2	Mixer2
AudioMeter1	AudioMeter	Peak Meter	Partition1		2	AudioMeter 1
LogicMeter1	LogicMeter	Logic Meter 8 C...	Partition1		2	LogicMeter 1
Level1	Level	proLevel	Partition1		2	proLevel



7. Open a browser on the local computer and enter in Velocity's IP address.



8. Log into Velocity

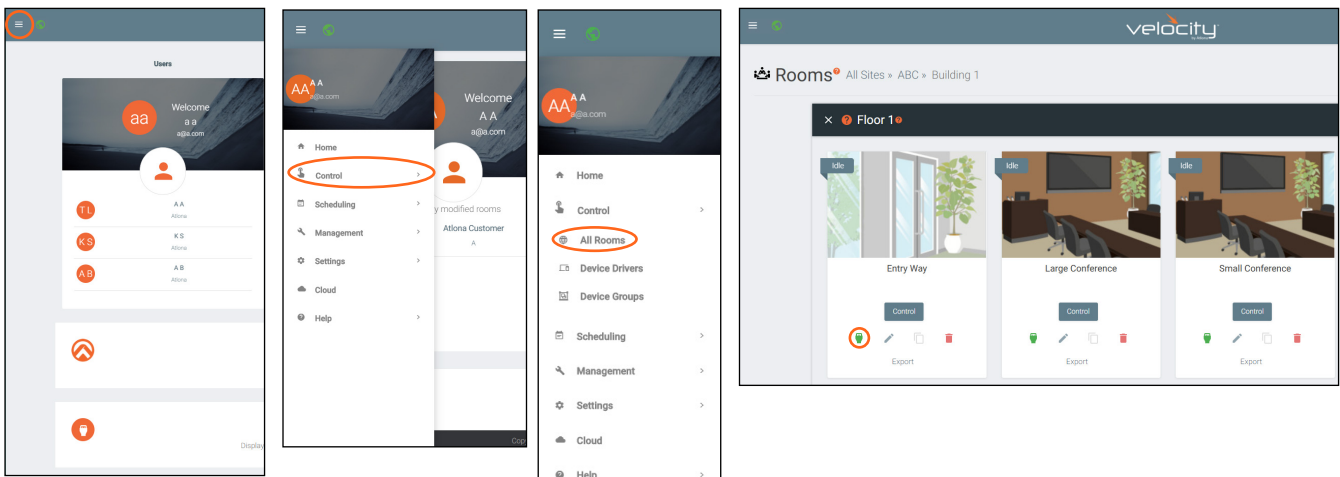


9. Locate the ≡ in the top left corner of the home page and left click to open the menu.

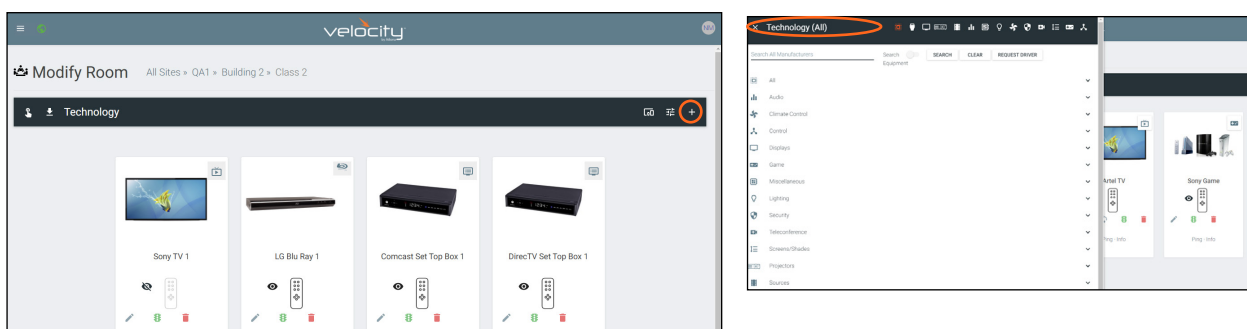
10. Select **Control** from the menu. New options will appear.

11. Select **All Rooms**. A new screen will open.

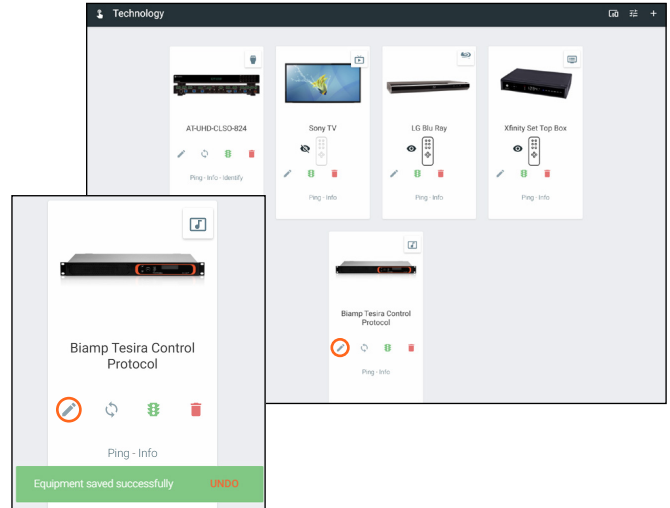
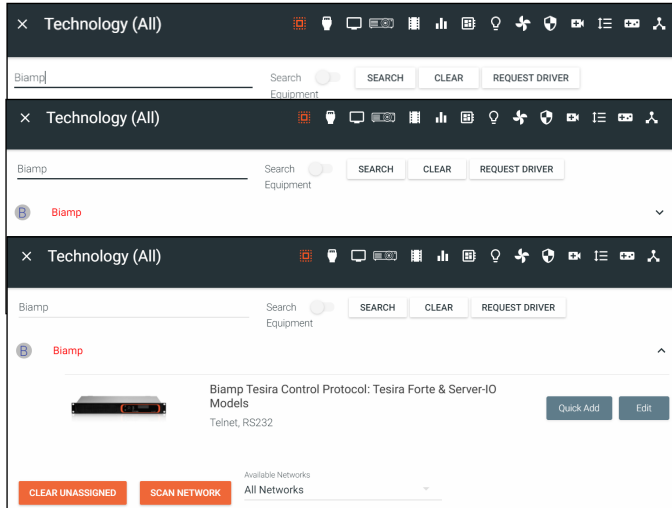
12. Select the **Edit Room Technology** button.



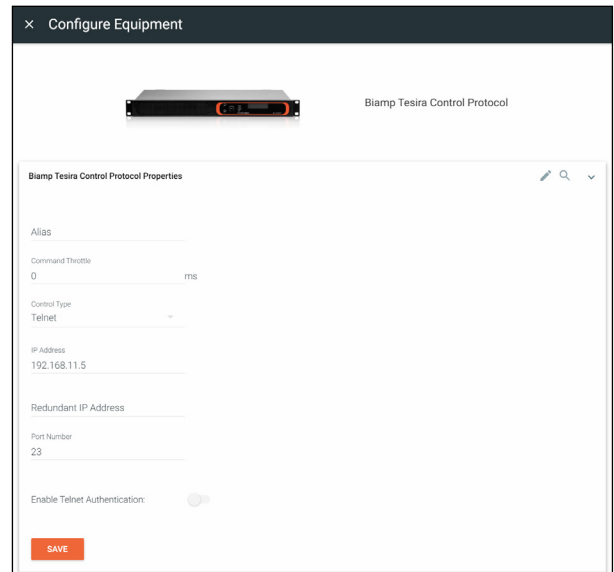
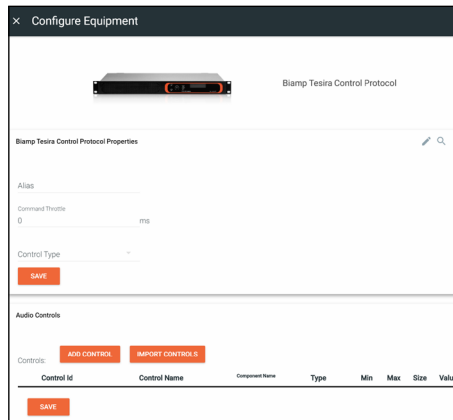
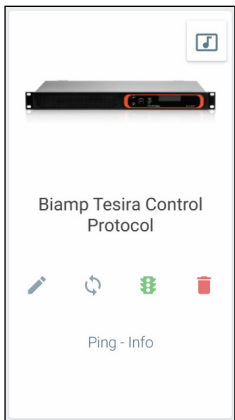
13. Select the + (add) button within the room. A new navigation will slide open.



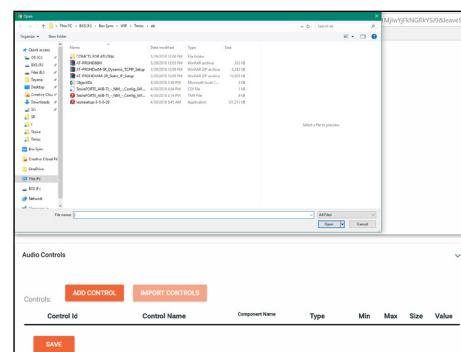
- Type Biamp into the search field and press the SEARCH button.
- Select the orange Biamp option below the search field.
- Press the “Quick Add” button next to Biamp Tesira Control Protocol: Tesira Forte & Server-IO Models. The device will appear in the main room screen.



- Select the Edit (pencil) button on the Biamp box. The Configure Equipment screen will slide open.
- Type in the IP of the Biamp Tesira device and press the save button.

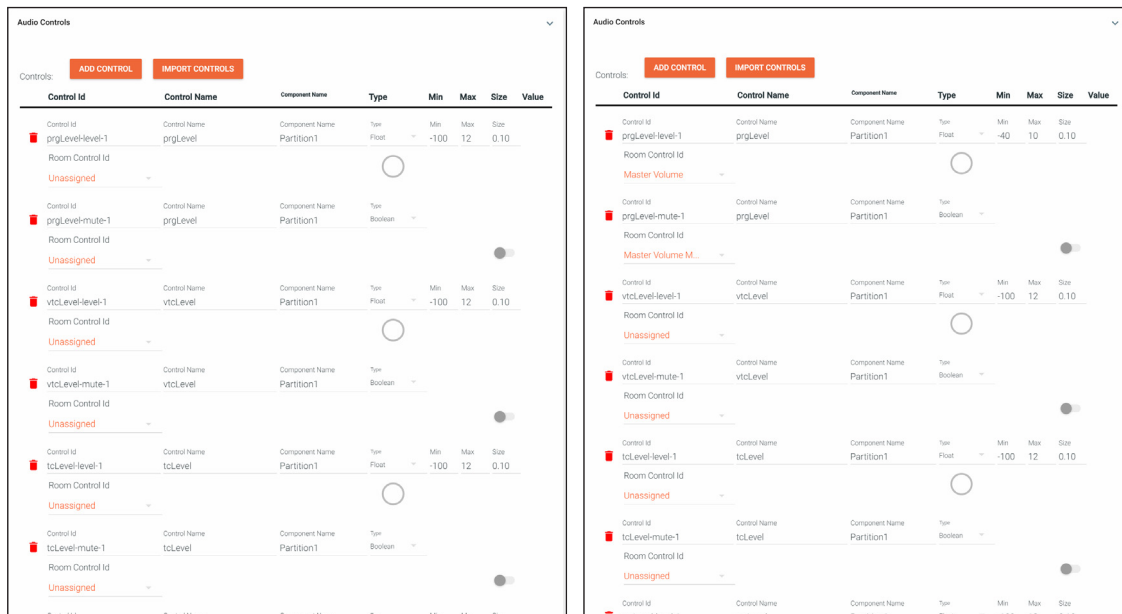


- Press the Edit button of the Biamp device box to reopen the Configure Equipment screen.
- Select **IMPORT CONTROLS**. A new window will open.

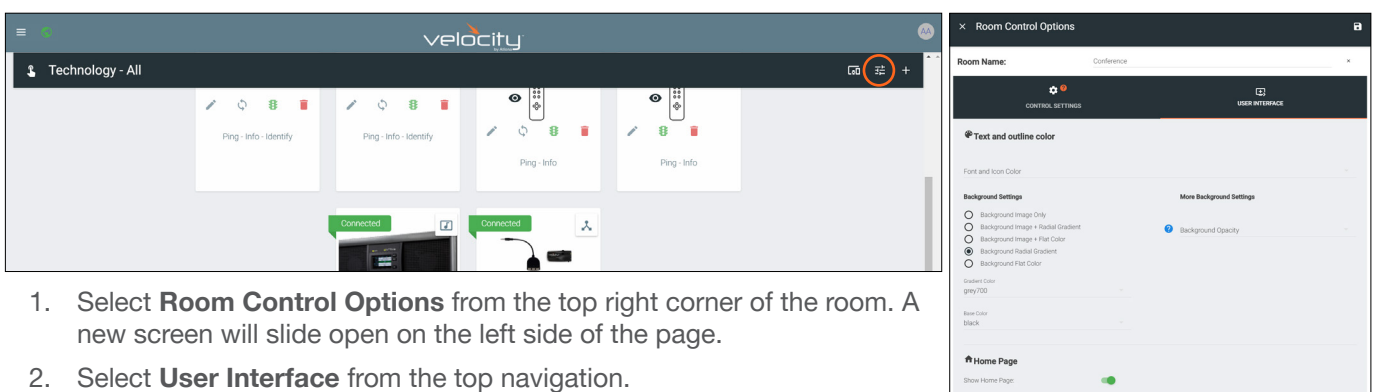


## Integration Note

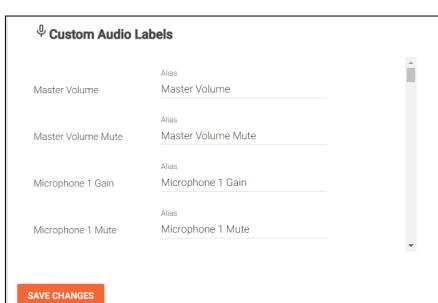
21. Select the previously saved Biamp .CSV file and press open. The controls will appear in the Audio Controls Section.
22. Press the save button to keep the imported commands. The Configure Equipment Screen will close.
23. Press the edit button on the device box to reopen the Biamp Tesira configure equipment screen.
24. Assign all user controls to a room command. Select the Unassigned drop down menu and select from the room commands list.
  - IMPORTANT:** Master Volume and Master Volume Mute must be selected for commands first to ensure the controls function correctly, unless using only the VoIP function.
25. Press the **SAVE** button to keep the current set up. The Biamp Tesira device is now set up and the room control can be launched using the hand in the top left corner of the screen



**NOTE:** The room commands can be renamed within the Room Control Options.

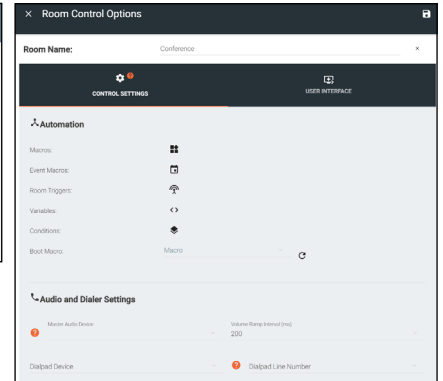
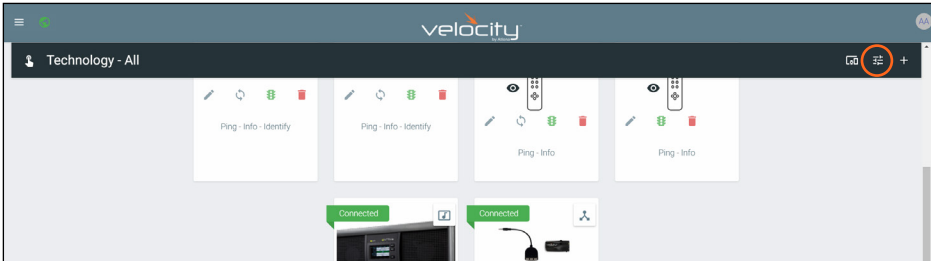


1. Select **Room Control Options** from the top right corner of the room. A new screen will slide open on the left side of the page.
2. Select **User Interface** from the top navigation.
3. Scroll down to the bottom of the screen.



4. Enter an alias for each command. If the room does not have enough of a certain type of command (such as volume) a different command can be given an alias that will display in the room commands list.

**NOTE:** If the Biamp device has VoIP controls imported, the dialpad must be selected inside the room control options under the **User Interface** selection before it can be used.



1. Select **Room Control Options** from the top right corner of the room. A new screen will slide open on the left side of the page.
2. Select Biamp Tesira Control Protocol from the Dialpad Device drop down menu.
3. Select the Dialpad Line Number to select the line the VoIP goes through.
4. Dialer and dialpad instance tags will be needed to link the controls. Enter them into the Dialer Status Instance Tag and Dialpad Instance Tag fields.
5. \*Optional\* Check the Visible on Home Page box next to Dialer.
6. Press the Apply Settings (floppy disc icon) at the top of the Room Control Options to save all the changes. The dialer will appear in the navigation on the room control page or the home page when selected.

