

Velocity 5.5" Touch Panel

AT-VTP-550-WH and AT-VTP-550-BL



The Atlona AT-VSP-550-BL and AT-VTP-550-WH are 5.5" touch panels in black and white, respectively, for the Atlona Velocity™ Control System. They feature contemporary, refined styling for modern presentation environments with 720x1280 native resolution, and a capacitive glass surface that supports multi-touch and gesture interactions. These touch panels conveniently install into a wall or furniture via a US or Euro one-gang opening. The VTP-550-BL and VTP-550-WH feature Power over Ethernet (PoE), enabling a single network connection for data and power. Setting up the touch panels is effortless as the AV control GUI is automatically uploaded from the Velocity Control Gateway processor during system configuration.

Package Contents

1 x AT-VTP-550	4 x Mounting screws
1 x Metal mounting plate	1 x Installation Guide

Operating Notes

- The Velocity 5" Touch Panel (AT-VTP-550) must be on the same network as the Velocity Gateway (AT-VGW-HW) or it will be unable to sync for control.
- The AT-VTP-550 is PoE capable, to power the unit, simply plug it into a 802.3at compatible network switch. If the network switch is not PoE capable, a PoE injector (purchased separately) can be used.



IMPORTANT: Velocity Gateway (AT-VGW-HW) must be set up before the AT-VTP-550 is fully functional.


Mounting Instructions

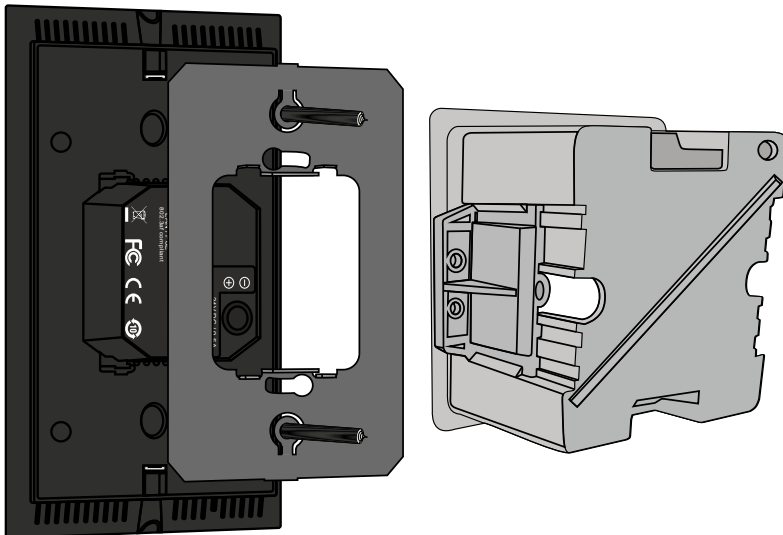
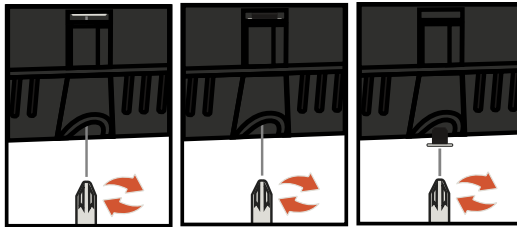
The AT-VTP-550 can be mounted to a 1 gang back plate.

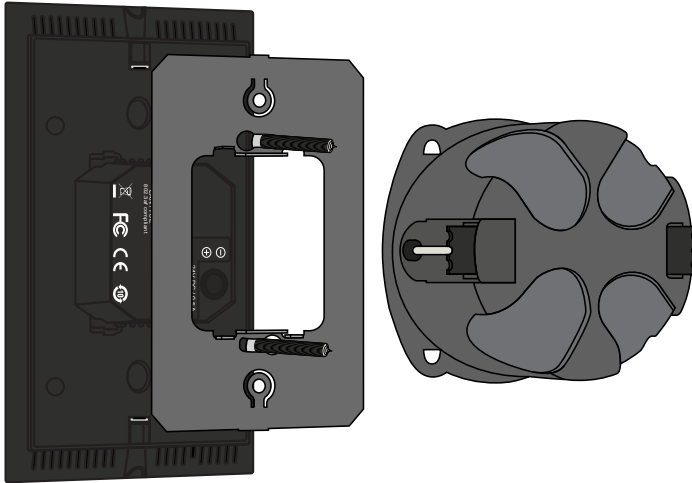
- 1 Select the type of 1 gang back box to use and install into a wall.

 **NOTE:** Install using the region's safety guidelines for electrical boxes.

- 2 Thread the Ethernet cable through the 1 gang box.
- 3 Install the included mounting plate into the 1 gang box.
 - a If using a UK back box, place the screws in the two inside mounting holes.
 - b If using a US back box, place the screws through the outside screw holes.
- 4 Loosen or remove the two screws located at the top and bottom of the unit.
- 5 Place the unit onto the metal back plate, the dual prongs inserting into the small opening on the back of the unit.
- 6 Tighten/attach the screws at the top and bottom of the touch pad.

 **NOTE:** To avoid damage to the unit, do not overtighten the screws.



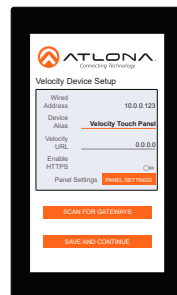


Installation and Set Up

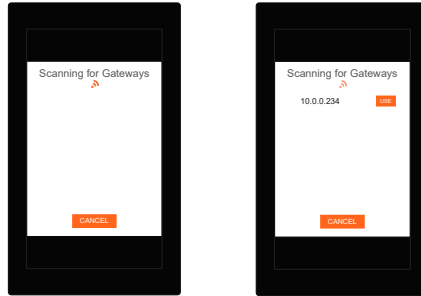


NOTE: Installation of the Velocity Touch Panel can only be done after Velocity has been set up. View the installation guides for VGW-HW/VGW-SW and Velocity Manual for instructions.

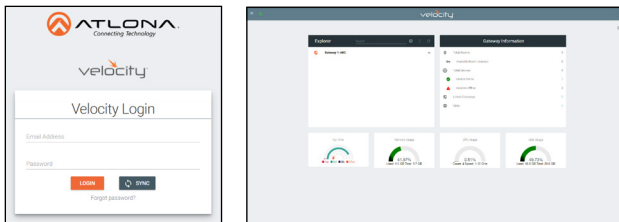
- 1 Connect the Ethernet cable into the back of the unit.
 - a If the Ethernet cable is connected to a non PoE switch, use a PoE injector using 802.3at (purchased separately).
- 2 Secure the unit in either the wall or optional stand, as explained in the mounting instructions.
- 3 The Velocity logo will display during the booting process and will go directly into setup. Press **CONTINUE** to start the setup process.



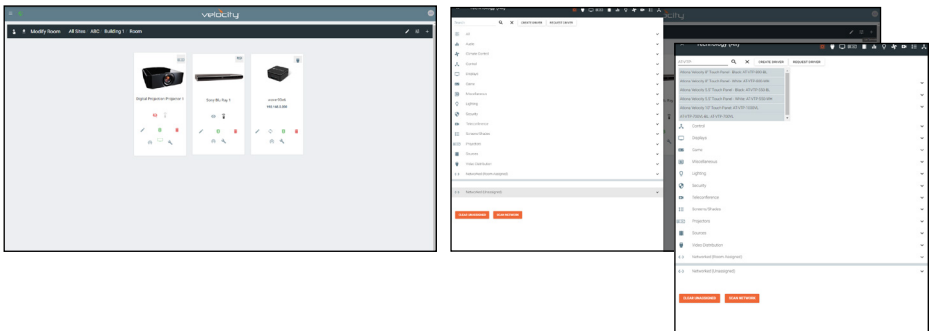
- 4 The unit will load a new screen. Change the Device Alias (if needed) to help differentiate when there are multiple touch panels at a site. A new screen will open.



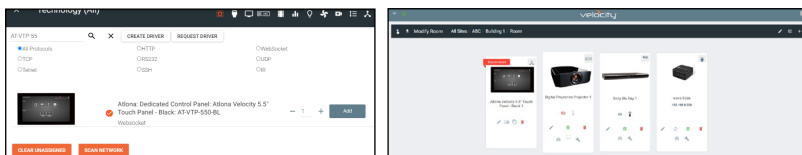
- 5 Press the **SCAN FOR GATEWAYS** button.
- 6 The touch panel will scan for new gateways. Once the correct gateway is found, press **USE**.
- 7 On a network computer, use a browser to log into Velocity.

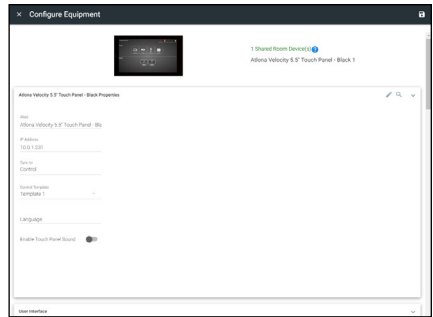
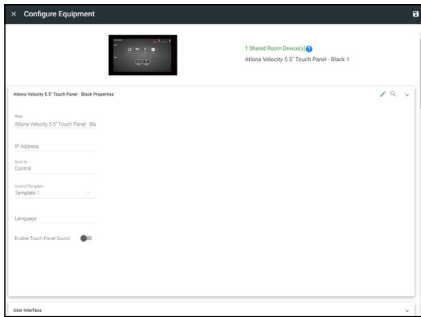


- 8 Navigate to the room the VTP will be located in.
- 9 Select the + button to add the unit.
- 10 Type the SKU into the search field and select the correct panel from the drop down.

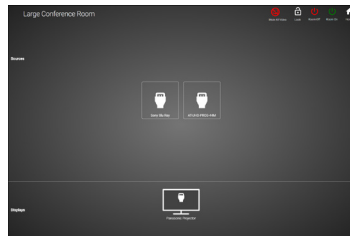
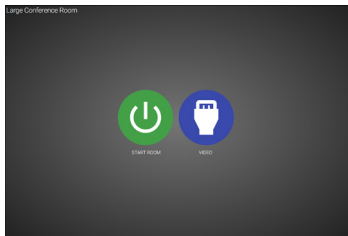


- 11 Select the **ADD** button. A tile for the unit will appear in the room.





- 12 Select the Edit button on the tile to open the unit settings.
- 13 Enter the IP of the VTP into the IP Address field and select the save icon in the top right corner of the screen. The screen will close, the panel will sync to the gateway, and the room control will display on the panel.



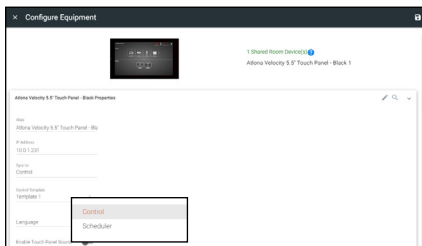
- 14 Depending on the room options there may be multiple buttons on the home page. Select the any icon to open the room's control page.

NOTE: The room must be completely set up to receive the control interface.

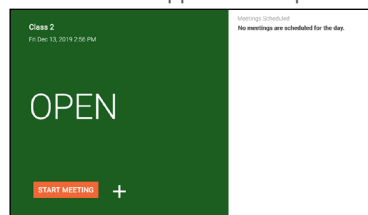
- 15 Select sources and displays by tapping on them or dragging and dropping the source on the display.

Scheduling

The panel can be set to scheduling, to do this, continue from step 13 to the next few steps.



- 1 Select the Sync to drop down menu and choose **Scheduler**.
- 2 Select the **Save** button. Once selected, the Scheduler will appear on the panel.



Advanced Settings

Once the touch pad has been set up, the settings can be changed or reset only through the advanced settings.

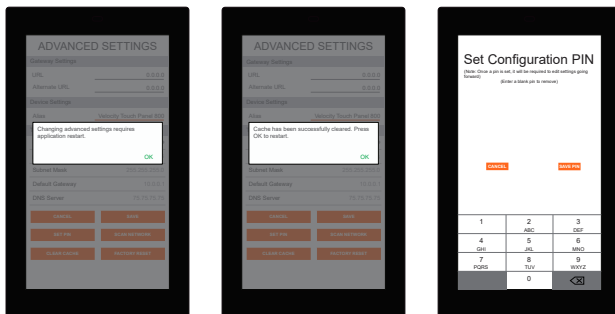
- 1 To access the settings, swipe from the left side of the touch pad to the right.
- 2 Select Advanced Setup.
- 3 Type in the PIN. Default PIN is 554361.



Within the advanced settings, all the touch pad settings can be changed or reset.

Gateway Settings -

- a If the gateway IP is known, it can be typed into the **URL** field.
- b If the gateway IP is unknown, press the **Scan Network** button to search for and add the gateway.



Device Settings - The touch pad can be renamed for easier syncing with Velocity. Type the name into the **Alias** field.

Touch Screen LAN Configuration - The current IP settings will display in these fields. To switch to a static IP, select the **Set Static IP** slider, fill in the IP information, and press Save.

Set PIN - The default PIN of 554361 can be changed to a new pin by pressing the **Set PIN** button. Type the new PIN in and press Save PIN.

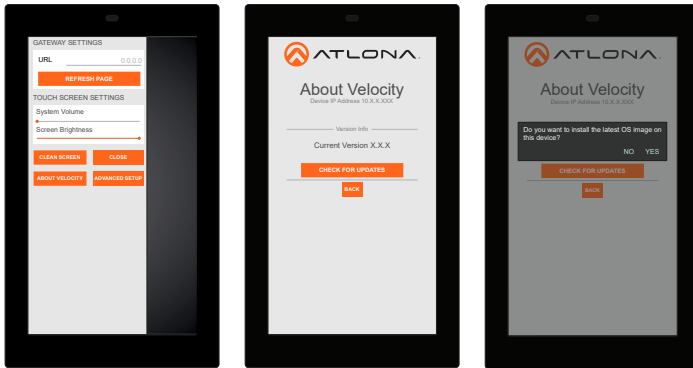
Clear Cache - Press the **Clear Cache** button to release the current cache of the VTP. Press the **OK** button to verify.

Factory Reset - Press the **Factory Reset** button to clear all the settings and start the touch pad set up again. Press the **OK** button to verify.

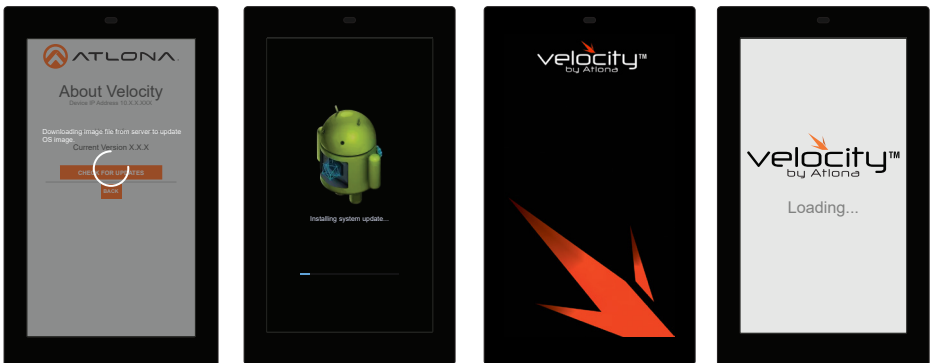
Firmware Updating

The touch panel can be updated from within its settings menu. To update, the panel must be connected to a network with internet access.

- 1 Swipe from the left side of the touch pad to the right to open the gateway settings menu.
- 2 Select the **ABOUT VELOCITY** button. A new screen will take over.
- 3 Select the **CHECK FOR UPDATES** button. A pop up will appear if there is an update.
- 4 Press the **YES** on the touch screen for the unit to download and install the firmware.



When the installation starts, it will switch to an Android update screen. Once completed it will restart the touch panel. The splash screen will appear, before the loading screen takes over. The update is complete when it returns to the control screen. This process can take up to 5 minutes to complete.

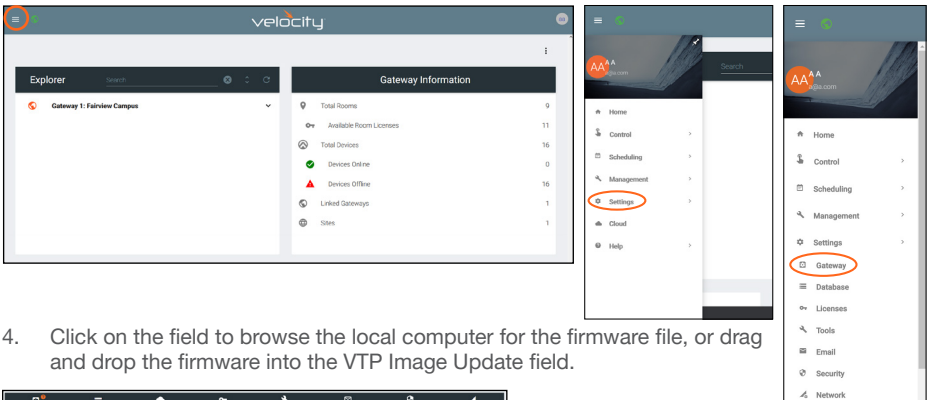


Manual Firmware Updating

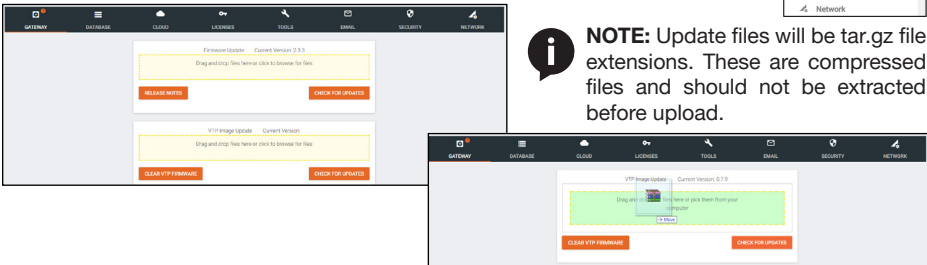
The AT-VTP uses a .tar.gz firmware that can be downloaded from the firmware section of <https://atlona.com/product/vtp-550/>. Once downloaded follow these instructions to update the firmware.

NOTE: When downloading the firmware file on a MAC, ensure that the file is not being auto-extracted. The option to turn off auto-extraction will be found within the browser settings.

- 1 Locate the ☰ in the top left corner of the home page and left click to open the menu.
- 2 Select **Settings** from the menu. New options will appear.
- 3 Select **Gateway**.

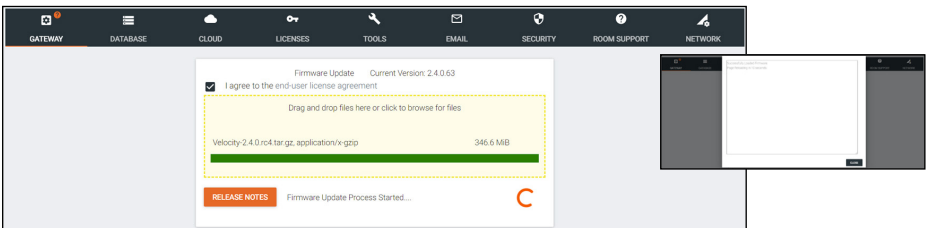


4. Click on the field to browse the local computer for the firmware file, or drag and drop the firmware into the VTP Image Update field.



NOTE: Update files will be tar.gz file extensions. These are compressed files and should not be extracted before upload.

Firmware upgrading will start automatically.



When the firmware upgrade is successfully completed, a pop up window will appear. It will close a few seconds later.

Warranty

To view the product warranty, use the following link or QR code:

<https://atlona.com/warranty/>.



English Declaration of Conformity

The English version can be found under the resources tab at:

<https://atlona.com/product/vtp-550/>.



Chinese Declaration of Conformity 中国RoHS合格声明

由SKU列出於:

<https://atlona.com/about-us/china-rohs/>.

