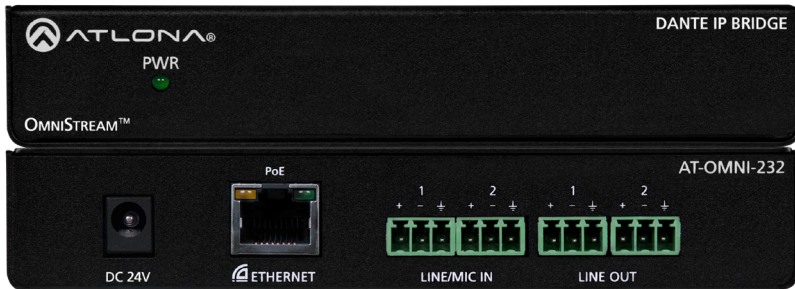


OmniStream Dual-Channel Dante Networked Audio Interface AT-OMNI-232



The Atlona OmniStream™ AT-OMNI-232 is a Dante™ networked audio interface that transmits and receives two channels of audio over a network. OmniStream is designed for distributing AV over Gigabit Ethernet in enterprises and other large-scale installations. AT-OMNI-232 devices are ideal for integrating microphones and other audio sources with a Dante-equipped DSP and OmniStream AV decoders. The AT-OMNI-232 features two balanced mic/line audio inputs with selectable 24 volt phantom power, as well as two balanced line level outputs. It can be powered over the network through Power over Ethernet (PoE), as well as from local AC power. The AT-OMNI-232 extends the power and flexibility of the OmniStream networked AV platform, by enabling facility-wide system designs that include complete audio system integration with Dante-based professional audio devices.

Package Contents

1 x OmniStream 232	1 x Wall/table mounting brackets
4 x Phoenix connector (3 pin)	1 x Installation Guide

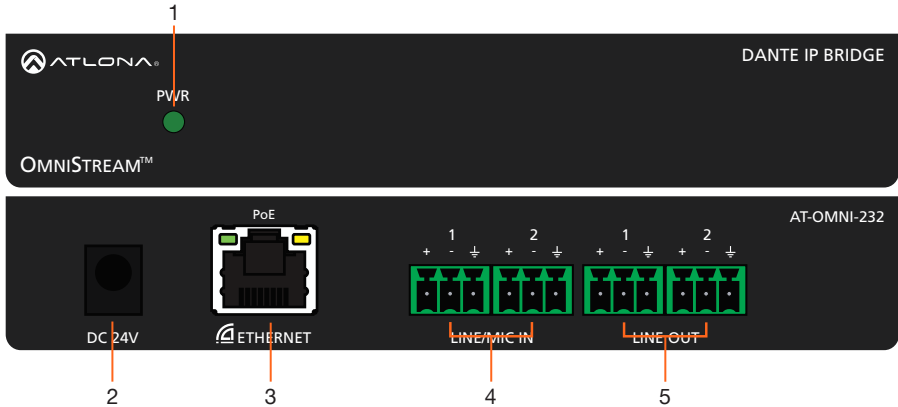
Operating Notes

- To ensure stable connection, disable 802.3 Energy Efficient Ethernet (EEE) on connected Ethernet switches.
- OmniStream requires the Atlona Management System (AMS) which provides discovery, and management. AMS is a free application that can be downloaded from the Atlona web site at <http://atlona.com/product/at-sw-ams/>.
- Connection issues may occur if control software is used over VPN. Ensure the software and OMNI-232 are on the same network



IMPORTANT: Visit <http://www.atlona.com/product/AT-OMNI-232> for the latest firmware updates and documentation.

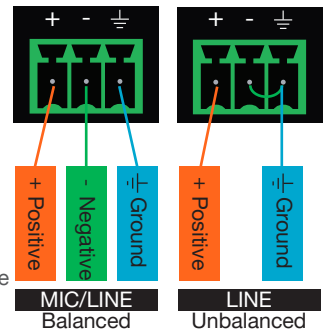
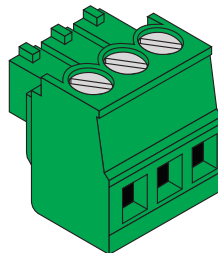
Panel Descriptions



1. **PWR**
This LED indicator is green when the unit is powered.
2. **DC 24V**
Connect optional power supply for an alternative power source.
3. **ETHERNET**
Connect to a PoE switch for power and signal distribution.
4. **LINE/MIC IN**
Connect to MICs or other audio sources.
5. **LINE OUT**
Connect to an audio DSP, amplifier, or other audio players/distribution devices.

Audio

Connect dynamic, self-powered, wireless, or phantom powered microphones, receivers (or other audio sources) with line level outputs using the included captive screw connectors. Either balanced or unbalanced connections may be used.



NOTE: Phantom power is set to off by default, to ensure MICs without phantom power are not damaged



NOTE: Use of a jumper is needed between negative and ground ports when using an unbalanced connection

Installation

1. Connect captive screw audio connectors to **LINE/MIC IN** ports from audio sources. e.g. MICs
2. Connect an Ethernet capable to the Dante compatible **ETHERNET** port.
Note: Connect to a PoE enabled switch, if one is not available, a power supply (AT-PS-241-NL) is purchasable through Atlona for local power.

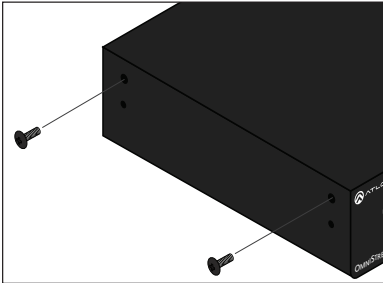


3. Connect captive screw connectors from **LINE OUT** ports to audio players/distribution devices. **e.g.** AT-PA100-G2
4. Log onto a local network computer and use the Dante Controller and AMS software to adjust device and audio settings. See page 4 for software instructions

Mounting Instructions

The AT-OMNI-232 includes two mounting brackets and four mounting screws, which can be used to attach the unit to any flat surface.

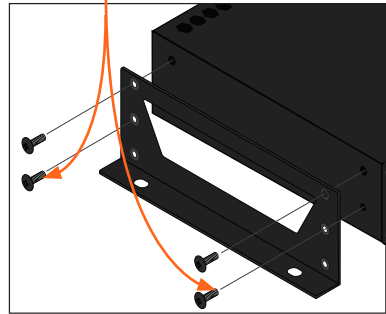
1. Using a small Philips screwdriver, remove the two screws from the left side of the enclosure.



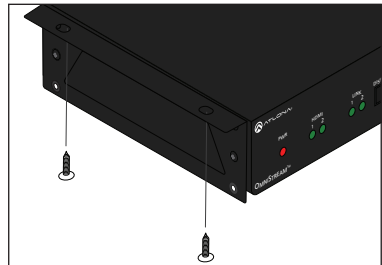
2. Position one of the rack ears, as shown below, aligning the holes on the side of the enclosure with one set of holes on the rack ear.
3. Use the enclosure screws to secure the rack ear to the enclosure.
4. To provide added stability to the rack ear, use two of the included screws and attach them to the two holes, directly below the enclosure screws, as shown above.
5. Repeat steps 1 through 4 to attach the second rack ear to the opposite side of the unit.

6. Mount the unit using the oval-shaped holes, on each rack ear. If using a drywall surface, a #6 drywall screw is recommended.

Included screws



NOTE: Rack ears can also be inverted to mount the unit under a table or other flat surface, as shown below.



IP

DHCP mode

By default, the OmniStream 232 is set to DHCP mode. In this mode, each encoder that is connected to the Local Area Network (LAN), will automatically be assigned an IP address by the DHCP server.

Auto IP mode

If no DHCP server is detected after 30 seconds, then the encoder will be placed in *Auto IP mode* and will be assigned a link-local IP address of 169.254.XXX.XXX.

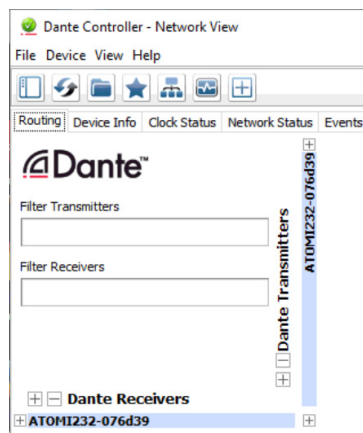
Software

Dante Controller

For network setting changes, finding IP, and I/O audio switching, Dante Controller is needed.

To download the software, go to <http://www.audinate.com>. The software will be found under products > software > Dante Controller. The download button is found on the right side of the page. Follow the instructions for downloading.

Once downloaded and installed, the AT-OMNI-232 will be automatically detected as long as the PC running Dante Controller and OmniStream 232 are on the same network.



AMS

AMS is used for adjusting device settings such as: input volume, output volume, phantom power, and updating.

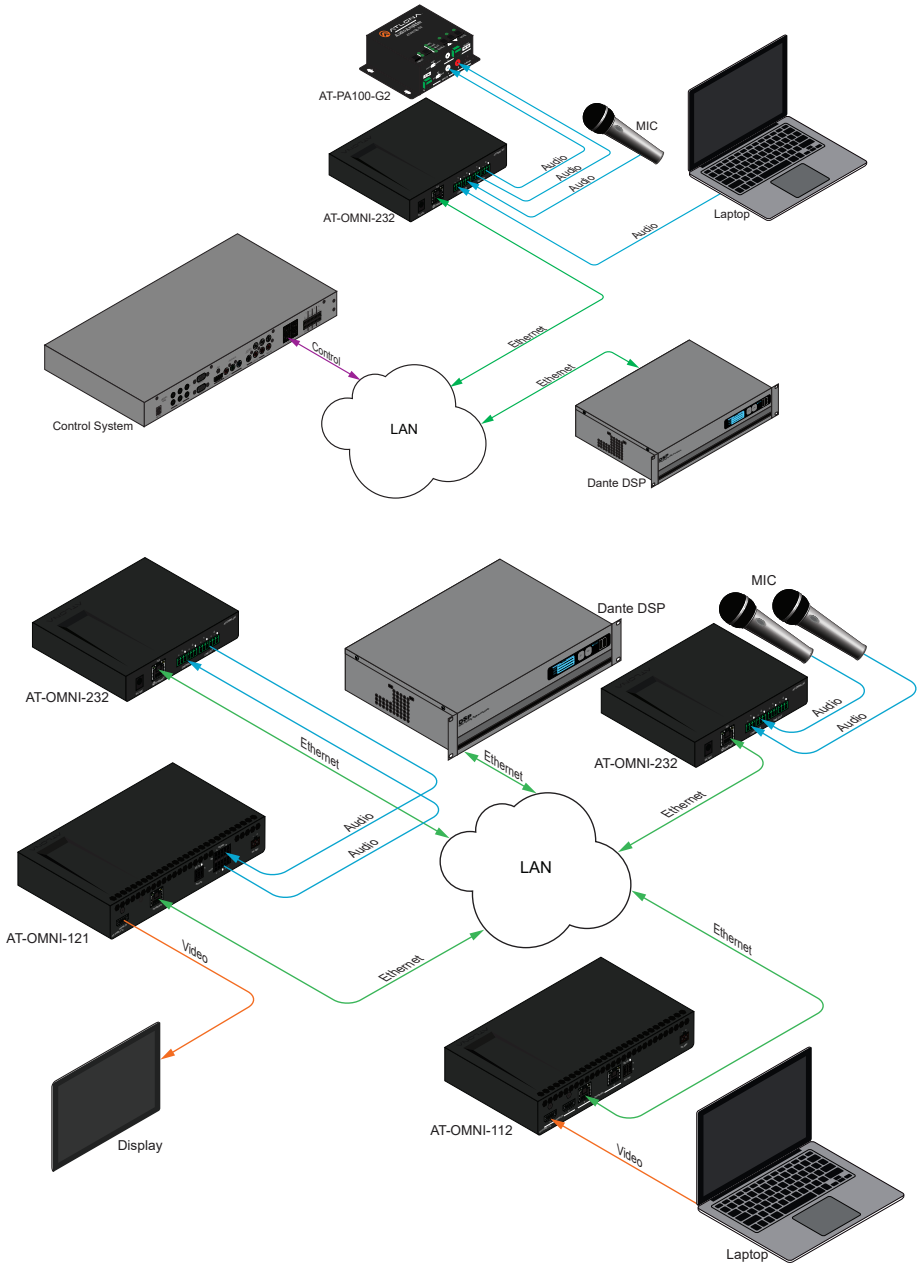
1. Download AMS software from <http://atlona.com/products/AT-SW-AMS/>
2. Launch the Atlona Management System app.
3. Launch a web browser and enter `localhost:8080` in the address field.
4. Enter the login information on the AMS web page, then click the **Login** button.

Login: admin
Password: admin123

5. Under the **Domain View**, locate the IP address for the **OMNI-232**.



Connection Diagram





Troubleshooting

Problem	Cause	Solution
PWR indicator is off.	No power.	<ul style="list-style-type: none">• If using a PoE-capable switch, make sure that the port on the switch that is connected to the encoder, has PoE enabled. When the encoder is powered using PoE, the PWR indicator will be green.• Check the Ethernet cable for possible damage or loose connections.• Connect the optional 24V DC power supply (AT-PS-241-NL is available from Atlona.com). When using an external power supply, the PWR indicator will be red.
OmniStream not displayed in AMS.	Unable to locate DHCP server on network.	<ul style="list-style-type: none">• Verify that the encoder is connected to a network with a DHCP server.• Inspect the Ethernet cable between the encoder and the network switch. All connections should be secure and the cable should be in good condition.• If a DHCP server is not found within 30 seconds, the encoder will default to Auto IP mode. In this mode, an IP address within the range of 169.254.xxx.xxx will be assigned to the encoder.



Notes

