

velocity™

Version Information

Version	Release Date	Notes
1	April 2021	Initial release
2	Aug 2021	Added steps for Hyper-V using an external switch
3	Nov 2022	Updated specifications and installation steps for new 2.5.2 build
4	Oct 2023	Updated instructions for new 2.6.1 build

Welcome to Atlona!

Thank you for purchasing this Atlona product. We hope you enjoy it and will take a extra few moments to register your new purchase.

Registration only takes a few minutes and protects this product against theft or loss. In addition, you will receive notifications of product updates and firmware. Atlona product registration is voluntary and failure to register will not affect the product warranty.

To register your product, go to <http://www.atlona.com/registration>

Sales, Marketing, and Customer Support

Main Office

Atlona Incorporated
70 Daggett Drive
San Jose, CA 95134
United States

Office: +1.877.536.3976 (US Toll-free)
Office: +1.408.962.0515 (US/International)

Sales and Customer Service Hours
Monday - Friday: 6:00 a.m. - 4:30 p.m. (PST)

<https://atlona.com/>

International Headquarters

Atlona International AG
Tödistrasse 18
8002 Zürich
Switzerland
Office: +41 43 508 4321

Sales and Customer Service Hours
Monday - Friday: 09:00 - 17:00 (UTC +1)

Operating Notes

For best results, the gateway should be located on the same network as the controlled devices.

As of this writing, there are no firmware updates for this product. When new firmware is released, update instructions will be included with the firmware and will be appended to this manual.

Table of Contents

Introduction	5
Requirements	5
Verification and Setup	6
Verification	6
Hyper-V Verification	6
Setup	8
Velocity Installation	10

Introduction

Velocity and Velocity Device Manager use a Hyper-V set up to provide a Windows based installation option. This Hyper-V based system can run AT-VGW-SW or AT-VDM-SW instances depending on the system specifications. Use the included system requirements to determine if the device can run either software. The setup and installation steps for both AT-VGW-SW and AT-VDM-SW will be the same, even if the system requirements differ.

Requirements

AT-VGW-SW 20 Room Minimum System Requirements

- Operating System - Windows 11 Enterprise, Windows 11 Pro, Windows 11 Education, Windows 10 Enterprise, Windows 10 Pro, Windows 10 Education, Windows Server 2022, Windows Server 2019, Microsoft Hyper-V Server 2019, Windows Server 2016, and Microsoft Hyper-V Server 2016
- RAM - Minimum 16 GB
- CPU - 4 CPUs minimum
- Gigabit Ethernet Card
- 128 GB VM HDD/SSD space minimum

AT-VDM-SW

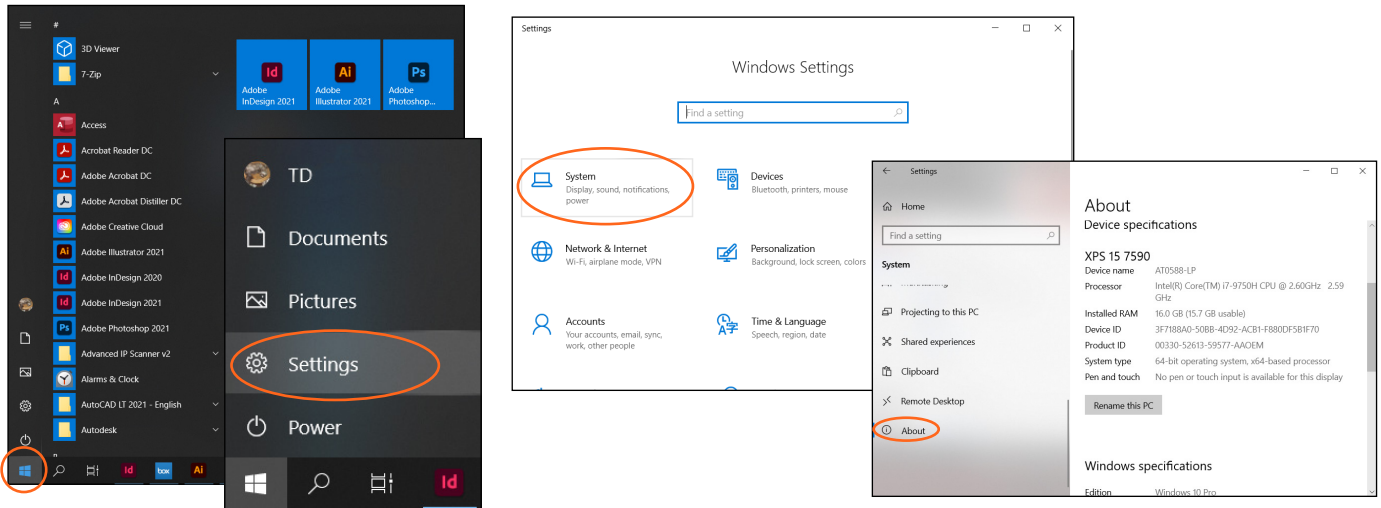
- Operating System - Windows 11 Enterprise, Windows 11 Pro, Windows 11 Education, Windows 10 Enterprise, Windows 10 Pro, Windows 10 Education, Windows Server 2022, Windows Server 2019, Microsoft Hyper-V Server 2019, Windows Server 2016, and Microsoft Hyper-V Server 2016
- RAM - Minimum 4 GB memory
- CPU - 64-bit processor with second-level address translation (SLAT) and support for VM Monitor Mode Extension (VT-c on Intel CPUs)
- Gigabit Ethernet Card
- 32 GB VM HDD/SSD space minimum
- Velocity Hyper-V Virtual Machine downloaded from the VDM download page

Verification and Setup

Before installation, Hyper-V must be set up on the Windows appliance. The appliance must be running a compatible Windows version.

Verification

To verify the type of Windows the appliance is running, follow these steps:

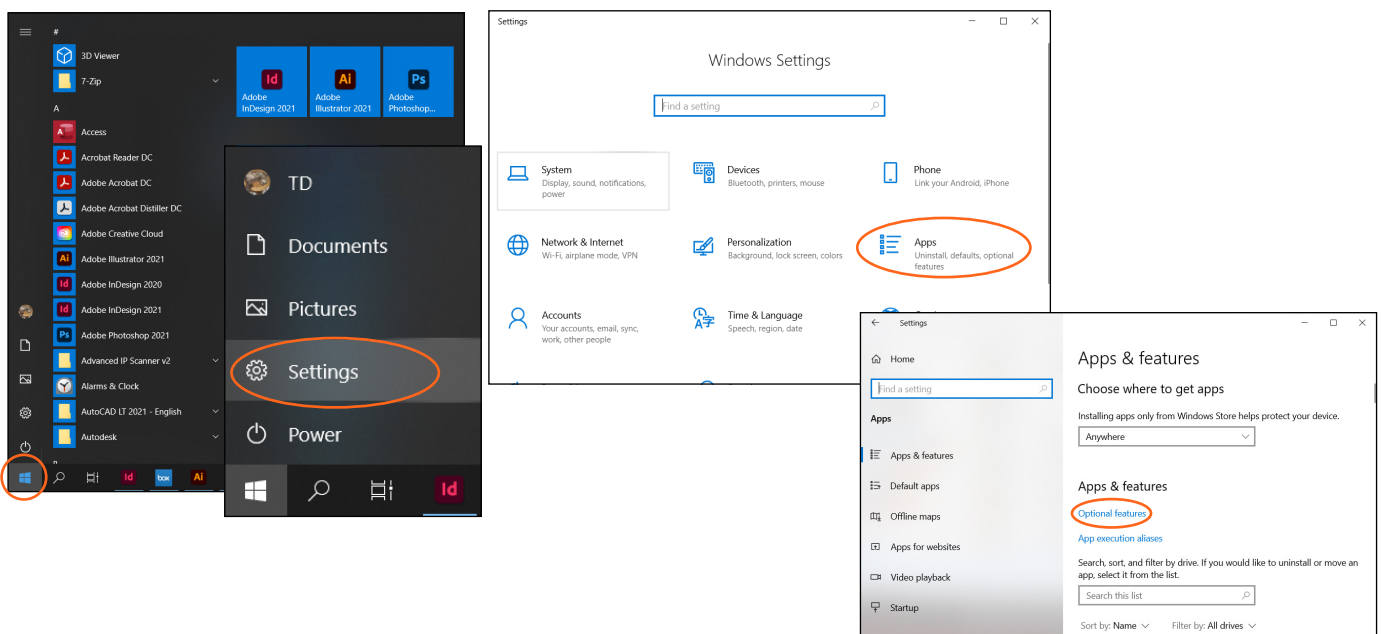


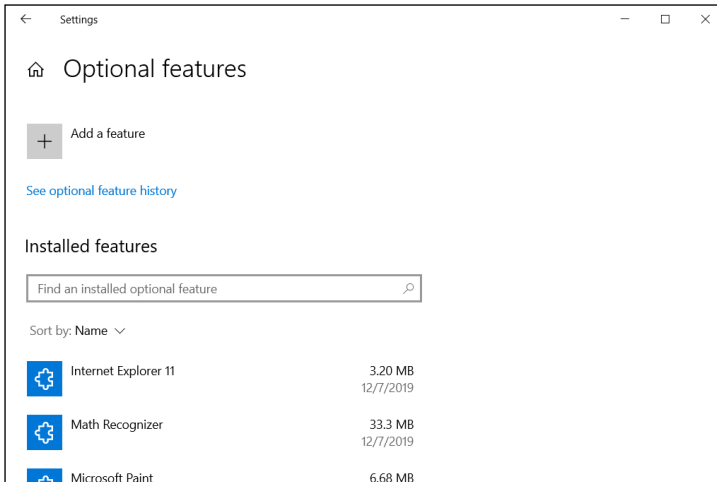
1. Select the **Windows icon** in the bottom left corner of the screen. A menu will open.
2. Select the **Settings icon**. A new window will appear.
3. Select **System** from the options. A new screen will open.
4. Scroll to the bottom of the left hand menu and select **About**. The new screen will open. The Windows edition will display under Windows Specifications.

Hyper-V Verification

Now that the Windows OS has been verified, Hyper-V must be enabled and installed (if not already there). To find out if Hyper-V is installed or not, there are two areas to check.

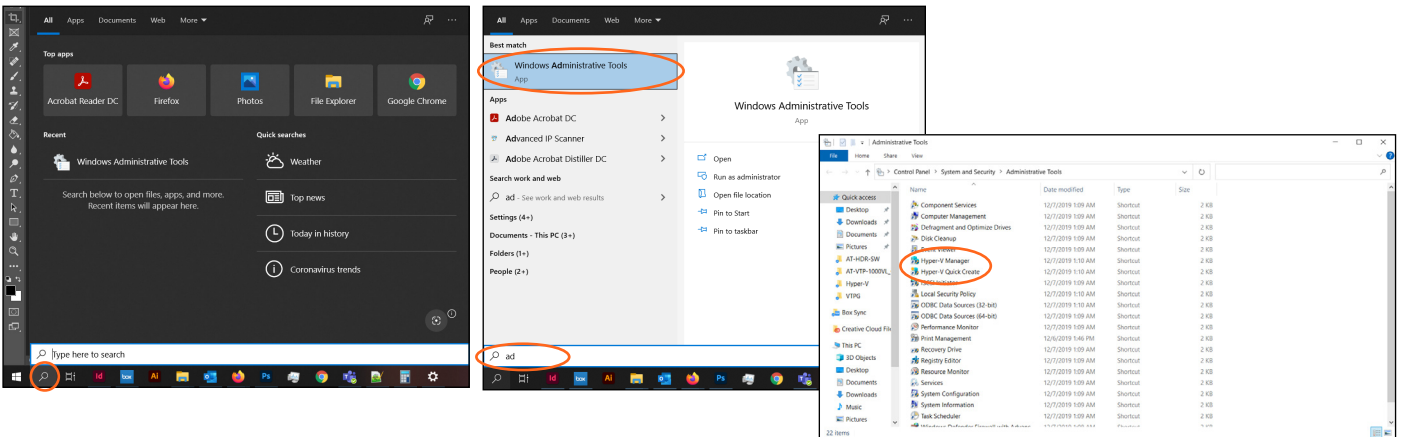
First area:





1. Select the **Windows icon** in the bottom left corner of the screen. A menu will open.
2. Select the **Settings icon**. A new window will appear.
3. Select **Apps** from the options. A new screen will open.
4. Select **Optional Features**. A new screen will open.
5. Scroll through the list to see if Hyper-V is installed. If Hyper-V is not located, go to the second area steps, if Hyper-V is there, go to the Setup section.

Second area:



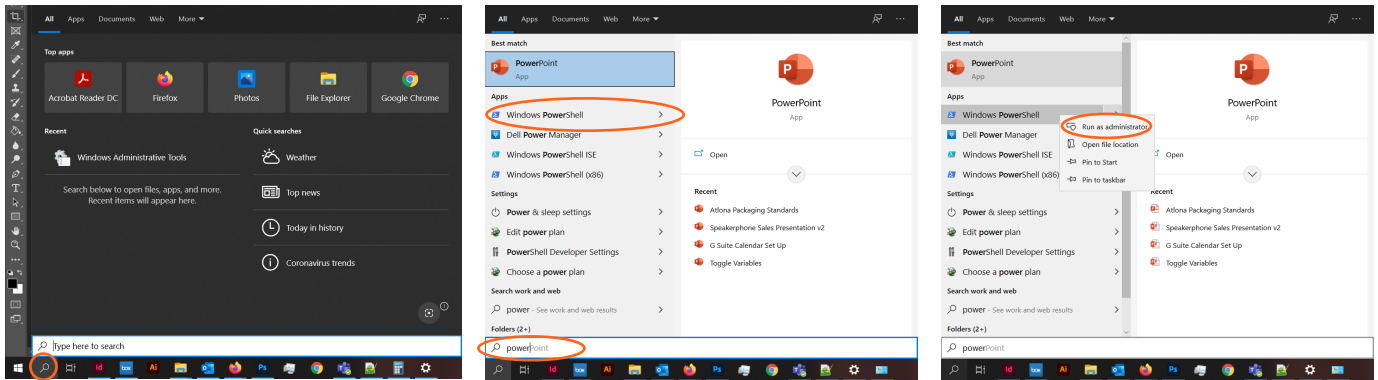
1. Select the **Search icon** in the bottom left corner of the screen. A menu will open.
2. Type **admin** into the search field. Options should appear at the top of the menu.
3. Select **Windows Administrative Tools** from the options. A new folder will open.
4. Scroll through the list to see if Hyper-V is installed.

Setup

Hyper-V must be enabled before Velocity / Velocity Device Manager can be installed. There are two ways to enable Hyper-V: PowerShell or Settings.

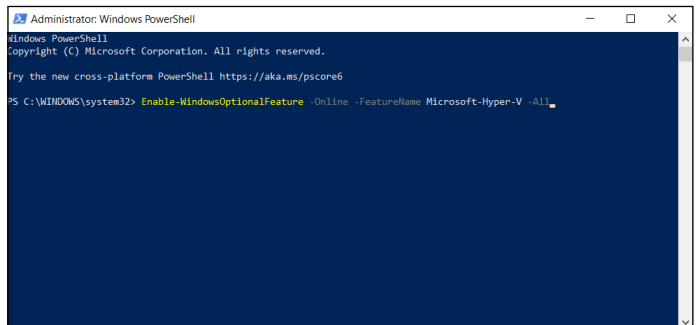
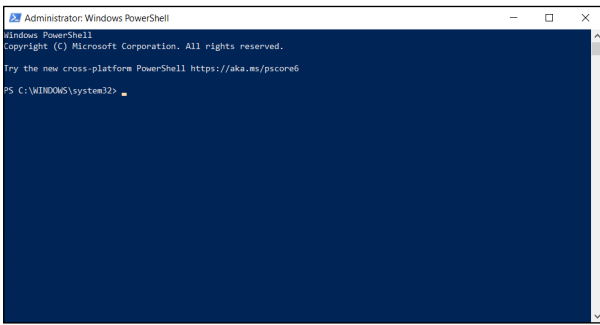
NOTE: The instructions may be updated by Windows, to see the most recent instructions, check out the [Windows Hyper-V](#) webpage.

PowerShell:

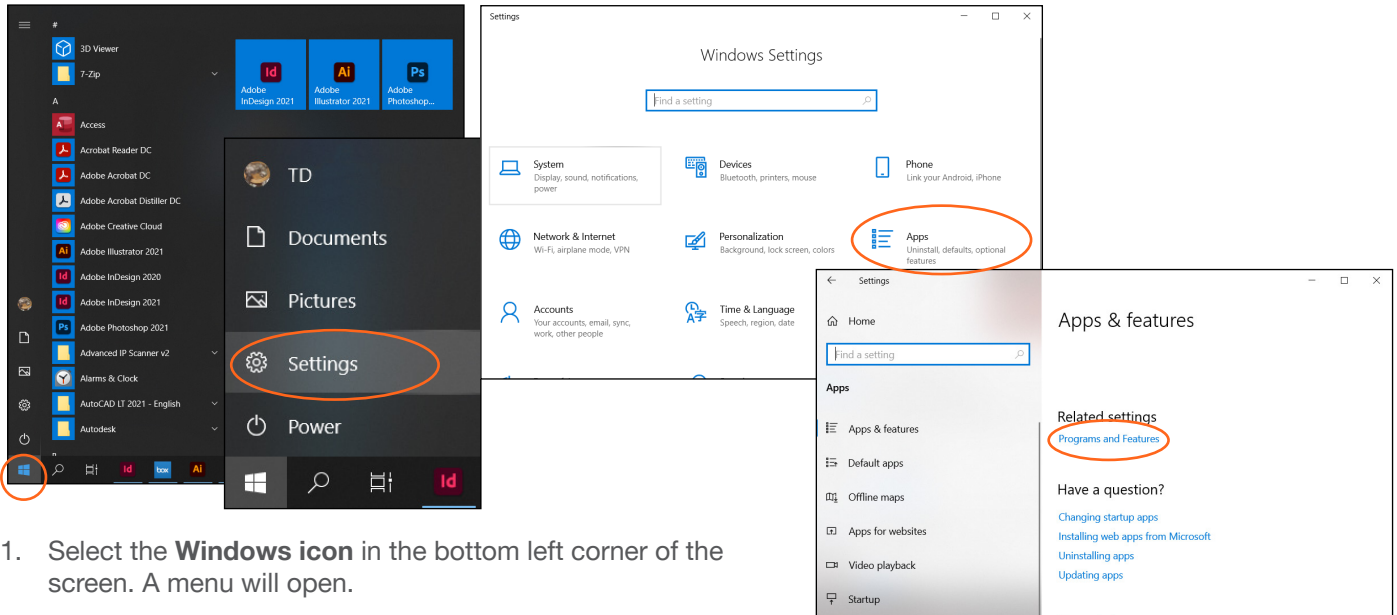


1. Select the **Search icon** in the bottom left corner of the screen. A menu will open.
2. Type **Power** into the search field. Options should appear at the top of the menu.
3. Right click **PowerShell** from the options and select **Run as Administrator**. A new window will open.
4. Type in the command:

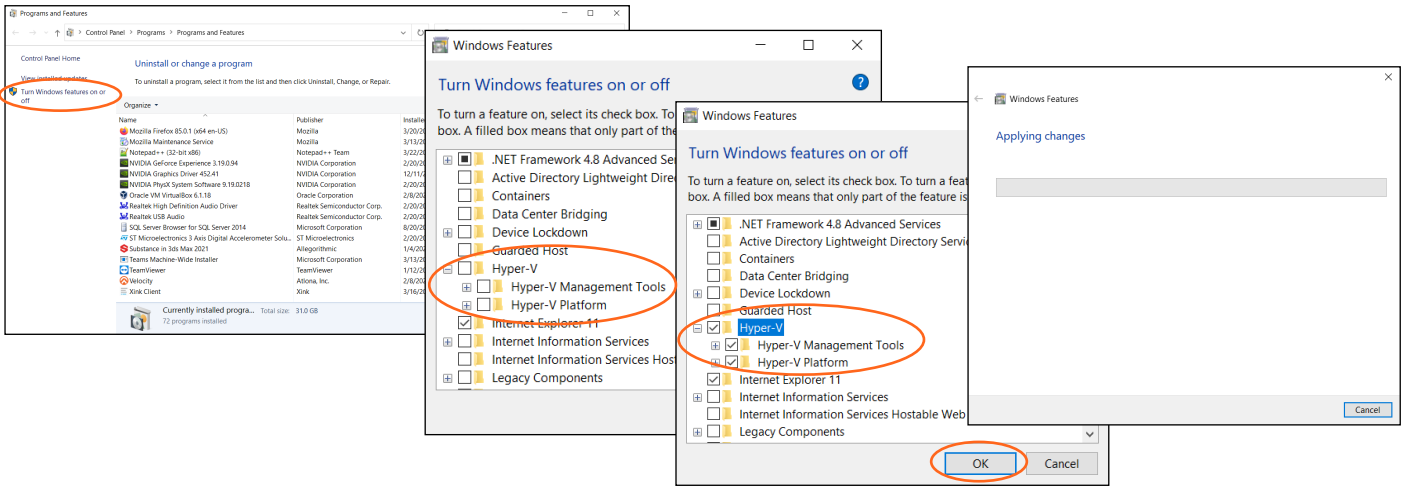
```
Enable-WindowsOptionalFeature -Online -FeatureName Microsoft-Hyper-V -All
```
5. Press enter to run the command. Once the process is done, the appliance will restart.



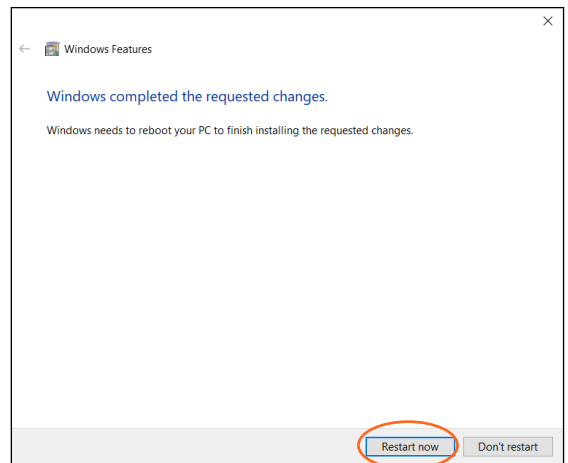
Settings:



1. Select the **Windows icon** in the bottom left corner of the screen. A menu will open.
2. Select the **Settings icon**. A new window will appear.
3. Select **Apps** from the options. A new screen will open.
4. Scroll to the bottom of the right side of the window to Related settings and select **Programs and Features**. A new window will open.

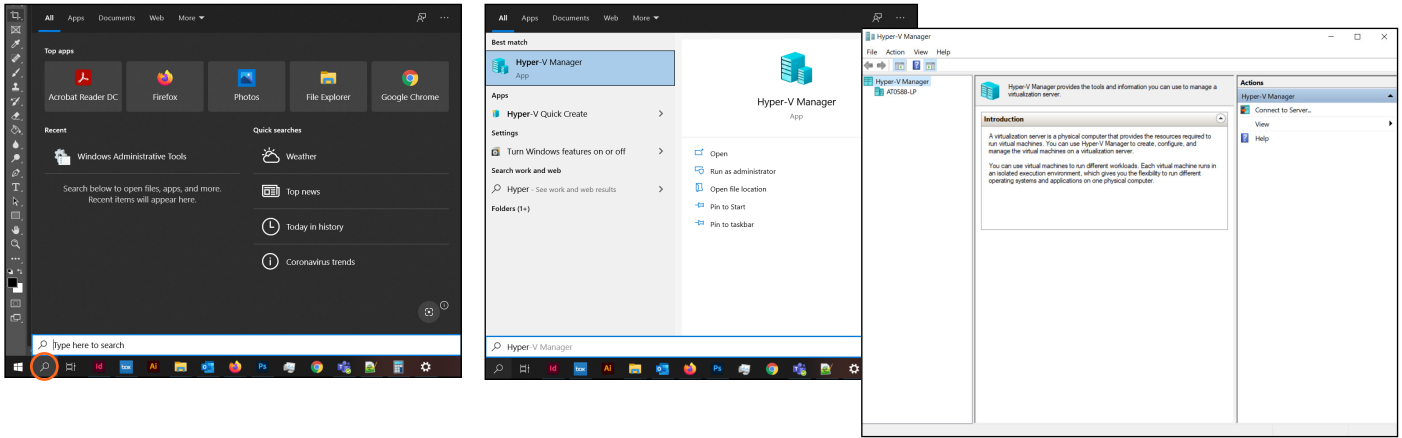


5. Select **Turn Windows features on or off** from the left side menu. A new pop up will appear.
6. Find **Hyper-V** in the features list and select the check box next to it. The sub features will be selected when the main box is checked.
7. Select the **OK** button, this will start the enabling process. A new window will open while the feature is being enabled. Once completed, a new screen will open.
8. Select **Restart Now** once the complete message shows up. The appliance will restart. Hyper-V setup up is done.

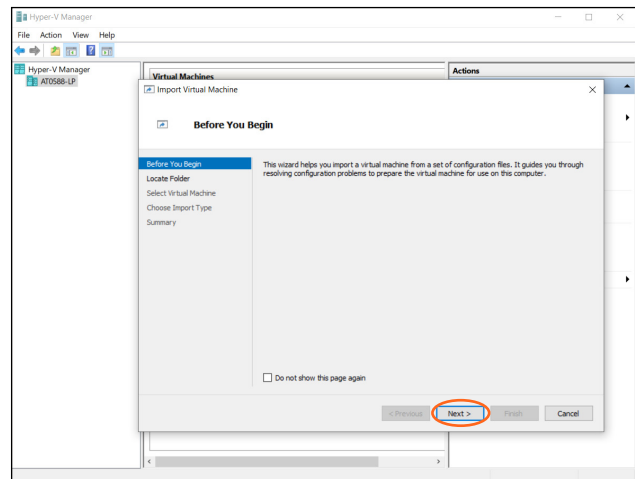
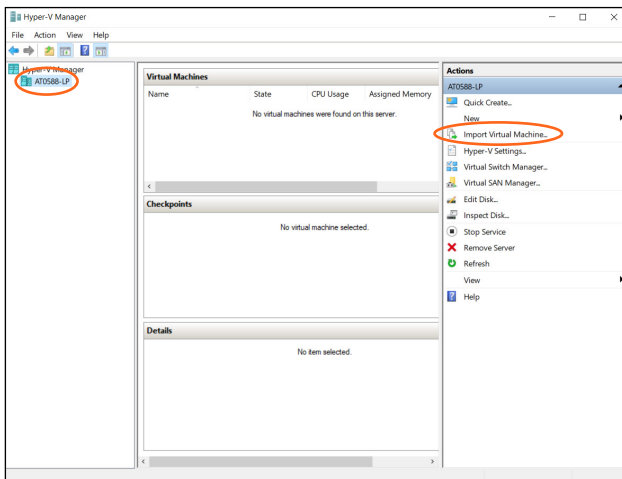


Velocity Installation

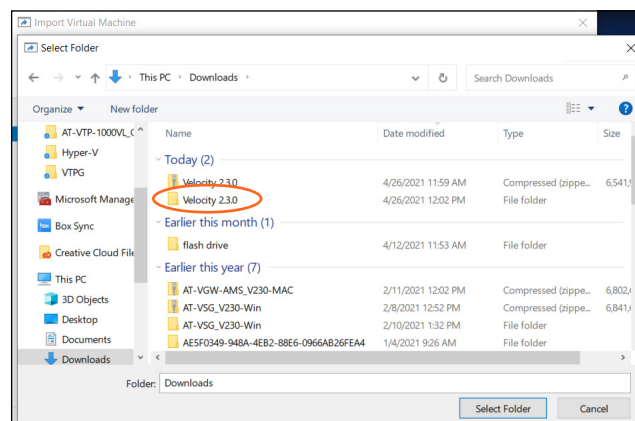
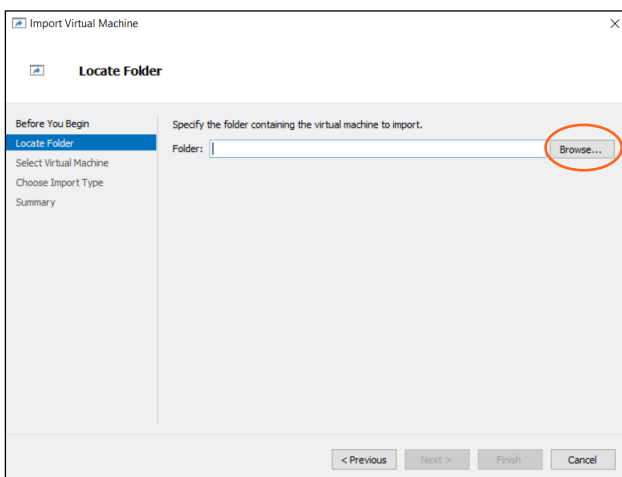
Now that Hyper-V has been set up, Velocity and Velocity Device Manager can be installed on the Windows Appliance. These steps can be followed for setting up a normal Hyper-V connection.



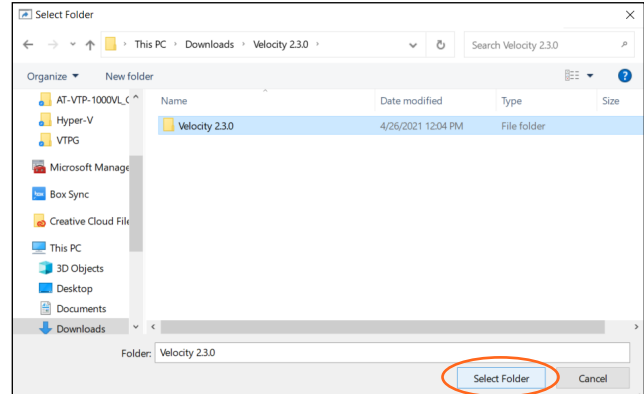
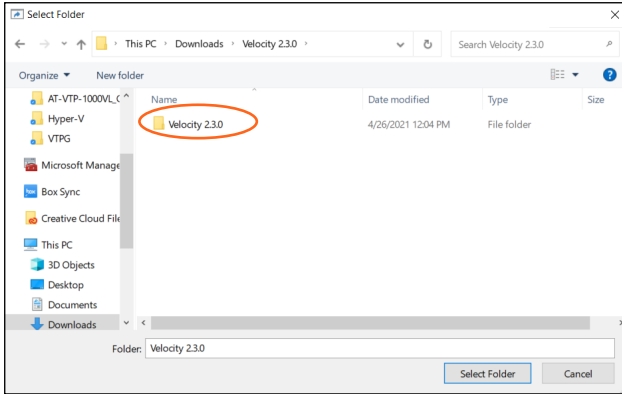
1. Select the **Search** icon in the bottom left corner of the screen. A menu will open.
2. Type **Hyper** into the search field. Options should appear at the top of the menu.
3. Select **Hyper-V Manager** from the options. A new window will open.



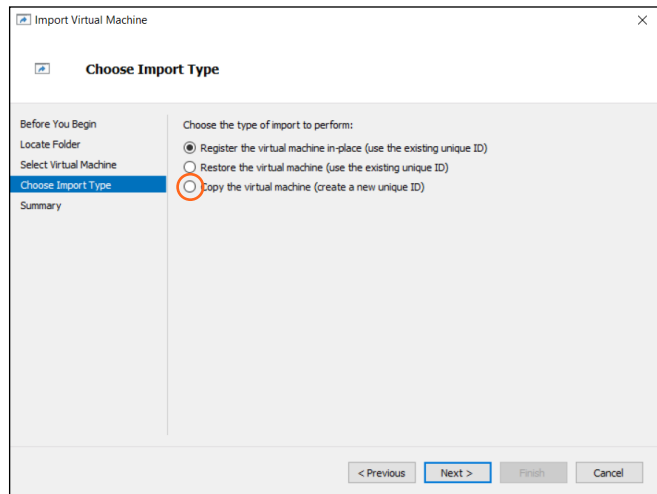
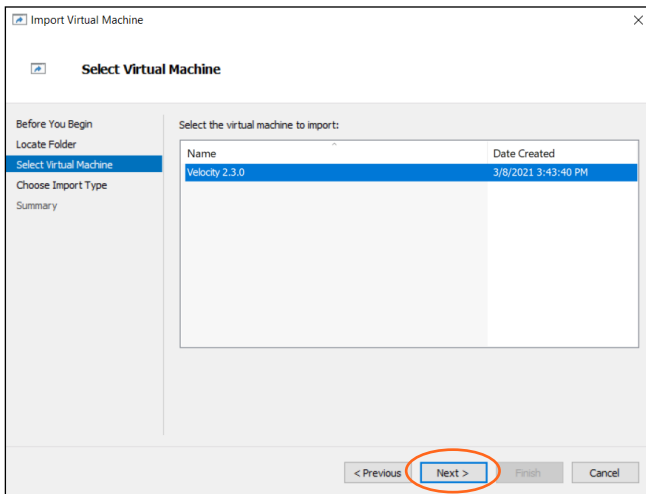
4. Select the appliance name. New options will appear on the right side of the window.
5. Select **Import Virtual Machine....** A new window will appear.
6. Select the **Next >** button. A new screen will open.



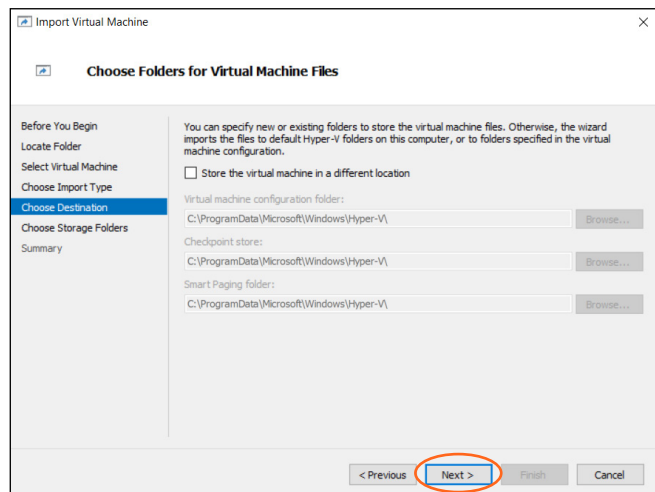
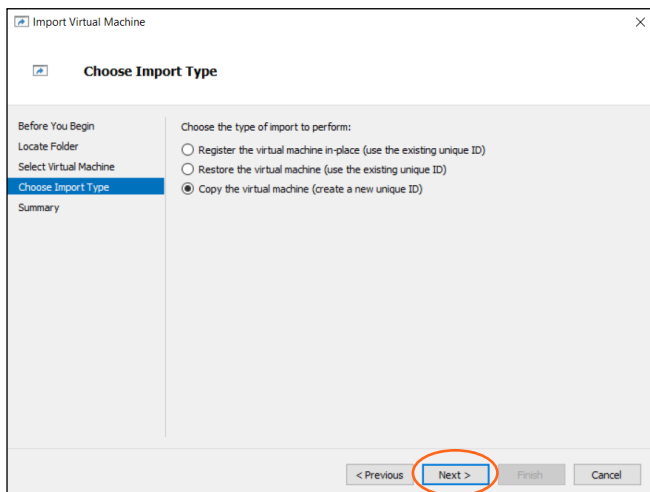
7. Select the **Browse...** button. A new window will open.
8. Double click to open the unzipped Velocity X.X.X folder. This will open a new screen.



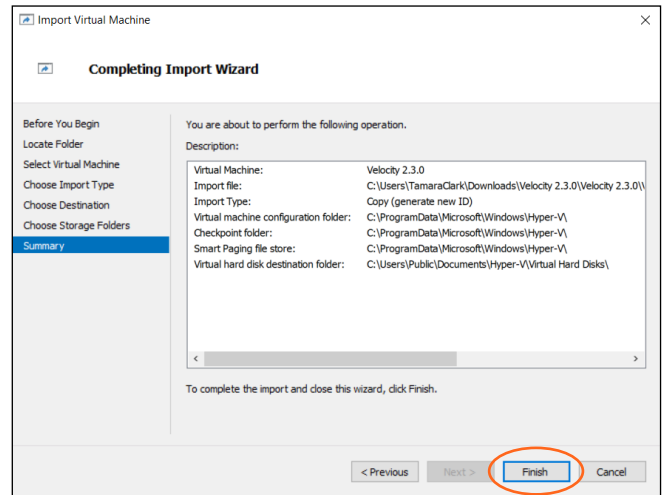
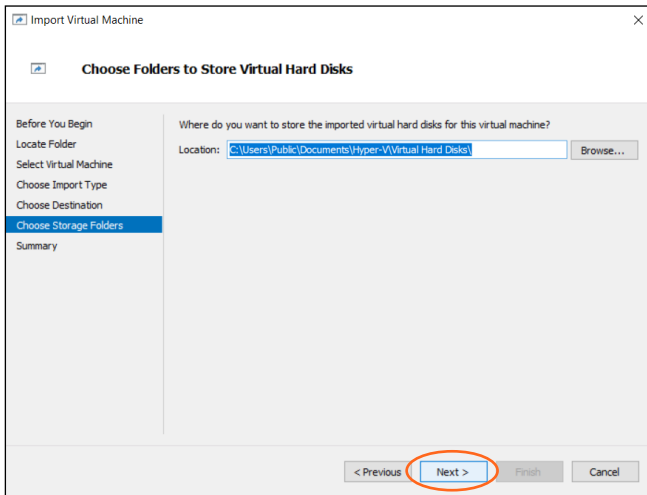
9. Select the Velocity X.X.X folder to highlight it.
10. Select the **Select Folder** button. The window will close and the folder name will appear in the Import Virtual Machine window.



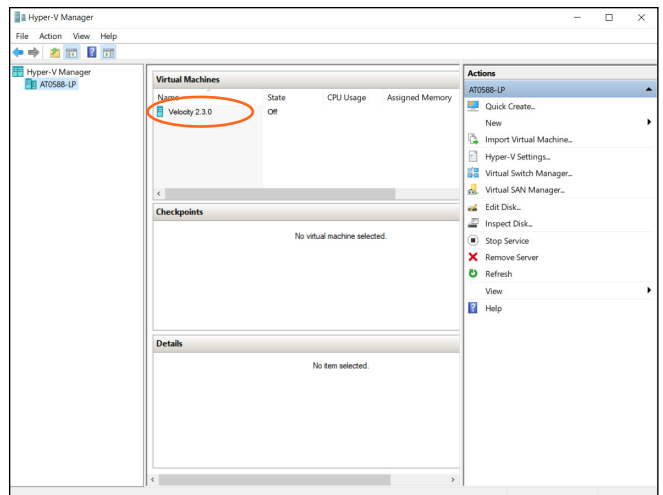
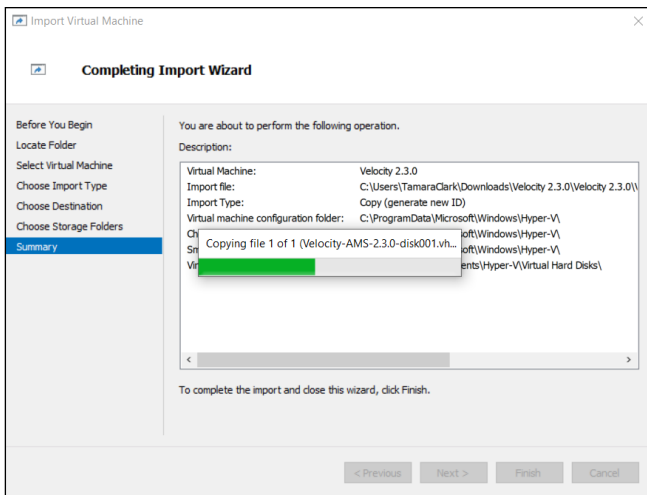
11. Press the **Next >** button. A new screen will open.
12. Select the radial button next to **Copy the virtual machine (create a new unique ID)**.



13. Press the **Next >** button. A new screen will open.
14. The new screen is fine as defaulted, so press the **Next >** button.

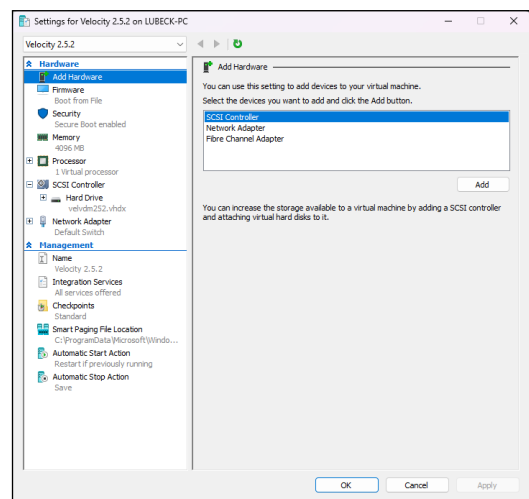
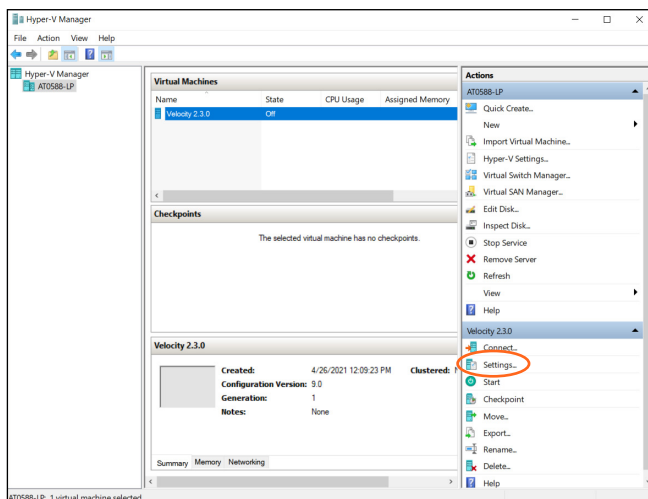


- The location is set by default, it can be changed if needed, but if not, press the Next > button. A summary screen will display
- Press the Finish button. A new pop up progress bar will display.

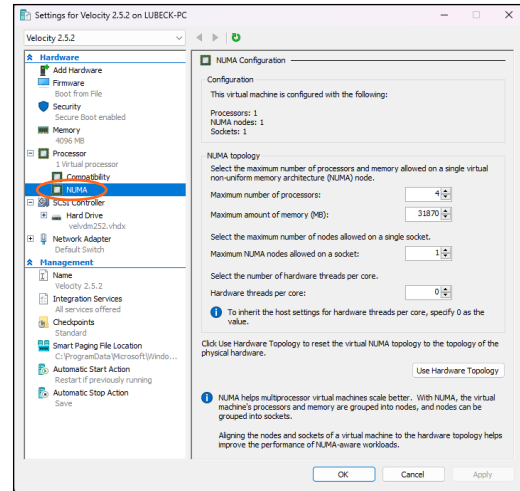
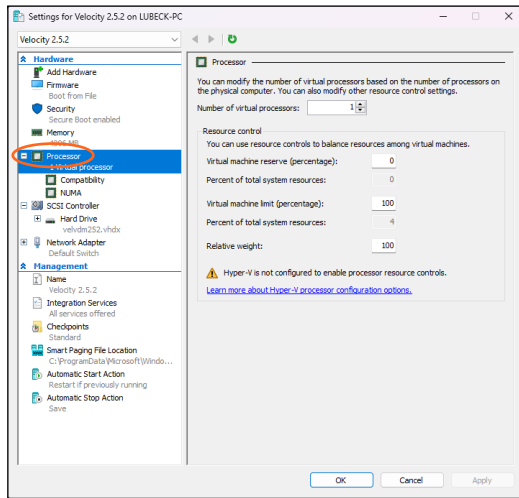


When the installation is complete, the pop up will close and leave the Hyper-V window.

- Select **Velocity X.X.X** in the center area. New options will appear on the right.

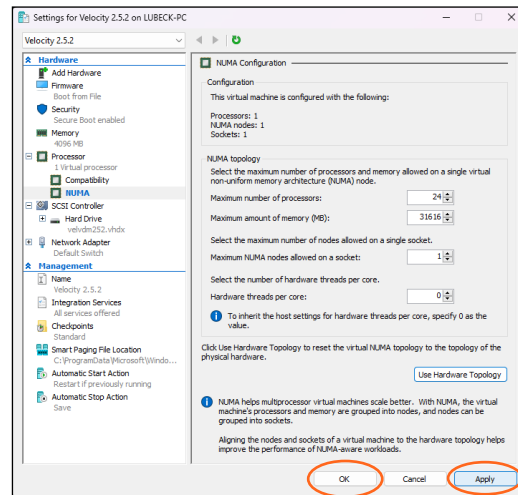
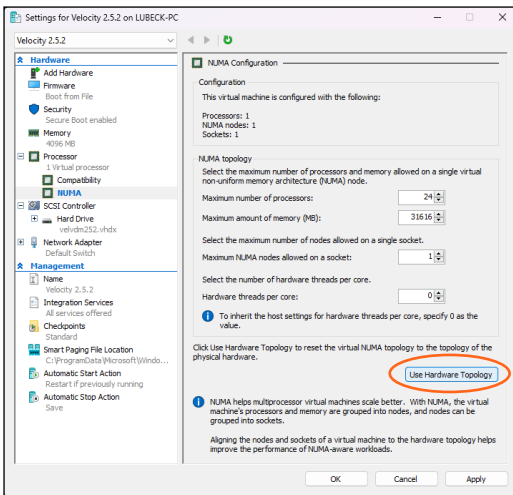


- Select **Settings...** from the menu. A new pop up will appear.



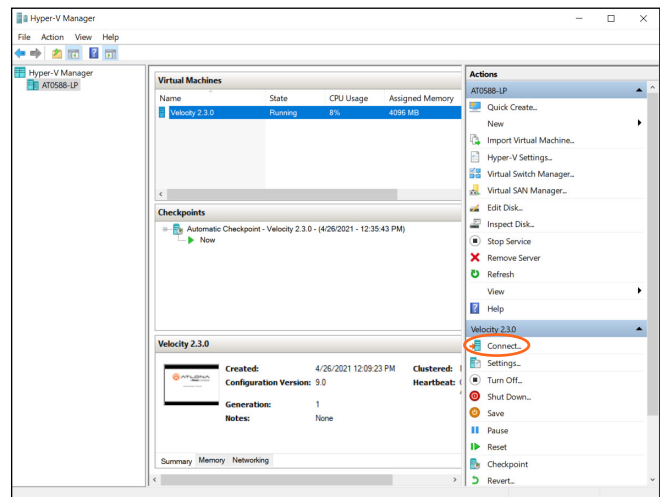
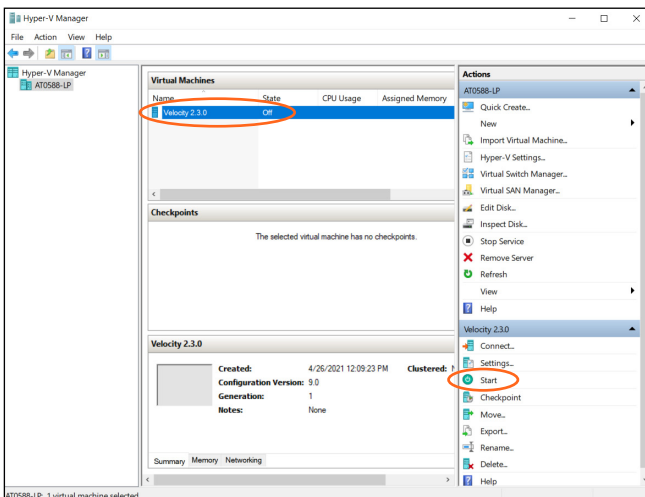
19. Select the + button next to Processor to open new options.

20. Select **NUMA**, new options will appear on the side.



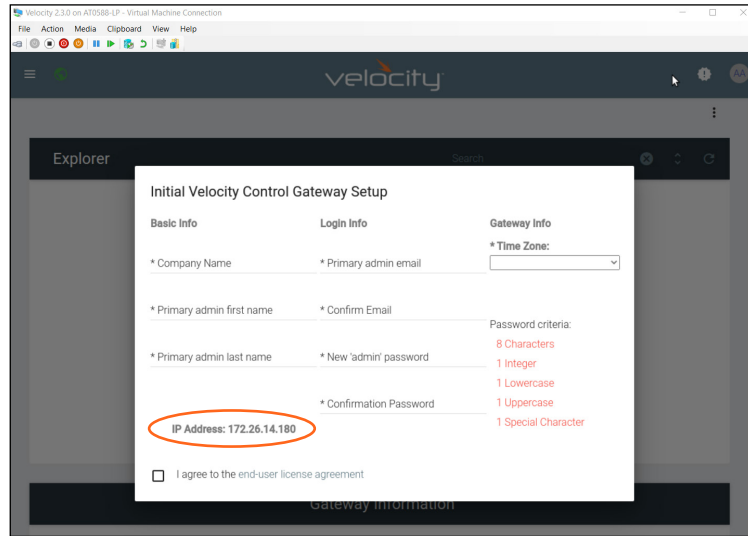
21. Select **Use Hardware Topology**.

22. Press **Apply** and then **OK** to close the window.



23. Select **Velocity X.X.X** from the Virtual machines and press the **Start** button.

24. Once an Atlona screen appears in the preview window, select the **Connect...** button. A new pop up will appear.

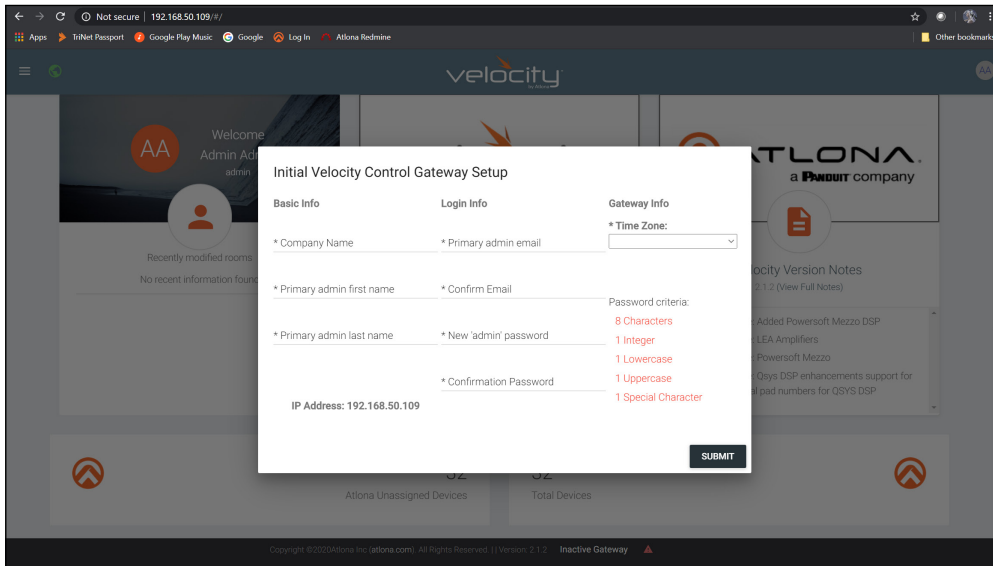


While Velocity and Velocity Device Manager can be set up and ran through the Hyper-V appliance, it is best to open a tab within a local network browser and run it there.

25. Type the IP address found on the Hyper-V pop up into the browser and press enter.



The browser will automatically log in and display the Setup pop up.



Velocity is ready to be used. Follow the instructions for Velocity found in the manual located at <https://atlon.com/product/at-vgw-sw/> under the resources tab and Velocity Device Manager can be found in the manual located at <https://atlon.com/product/at-vdm-sw/> under the resources tab.

Copyright, Trademark, and Registration

© 2023 Atlona Inc. All rights reserved. “Atlona” and the Atlona logo are registered trademarks of Atlona Inc. Pricing, specifications and availability subject to change without notice. Actual products, product images, and online product images may vary from images shown here.

All other trademark(s), copyright(s), and registered technologies mentioned in this document are the properties of their respective owner(s).