

WAVE™

Wireless Audio Visual Environment

Wireless Presentation Platform

Introducing the **Atlona Wireless Audio Visual Environment (WAVE)** and the **AT-WAVE-101**, an innovative wireless presentation system designed for quick and easy content sharing from up to four PCs or mobile devices. The WAVE-101 is designed for effortless screen casting with iOS®, Android™, Mac®, Chromebook™, and Windows® devices.

The versatility of the WAVE-101 expands well beyond BYOD content sharing, with a host of additional features to enhance education, corporate, and many other applications.



Third Generation Atlona Wireless Technology

WAVE-101 features at-a-glance

The WAVE-101 is a software-centric product designed for simple wireless collaboration for multiple presenters, alongside a comprehensive feature set that addresses AV integration requirements, network security, media playback, and more.

Native wireless casting



iOS Android PC / Mac Chromebook

Share content from

up to **4**

presenters on-screen

Dynamic Layout Mode



Instructor Mode



Moderate presentations

YouTube live streaming

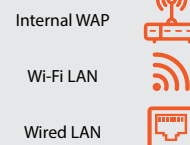


Media storage and playback



AT-WAVE-101

Flexible network connectivity



Secure wireless sharing

4823

Random PIN Codes



Firewall

Network management

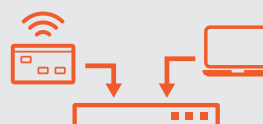


Monitor & manage installations

Cloud-based digital signage



AV system add-on



Software-based platform



The WAVE-101 is ideal for classrooms and meeting spaces, as well as open gathering areas where people come together to collaborate and communicate. The appeal of this product is the ability for participants to quickly and easily share content right from their laptops, smartphones, or tablets, with no advance setup necessary.



The WAVE-101 allows multiple students to share from their seats, with the instructor controlling the presentation through a specially designed moderator mode.

Wireless BYOD connections as easy as 1-2-3

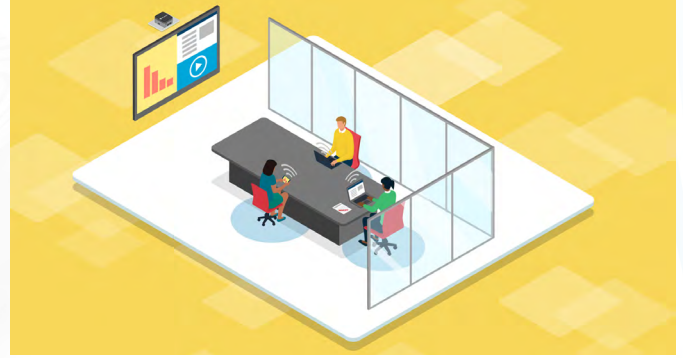
The WAVE-101 lets you cast your screen from an iOS, Android, Mac, Chromebook, or Windows device. There's no setup necessary beforehand – just use the native AirPlay®, Google Cast™, or Miracast™ protocol built into your laptop, smartphone, or tablet. For security, the WAVE-101 can randomly generate PIN access codes.

Dynamic Layout Mode (patent pending)

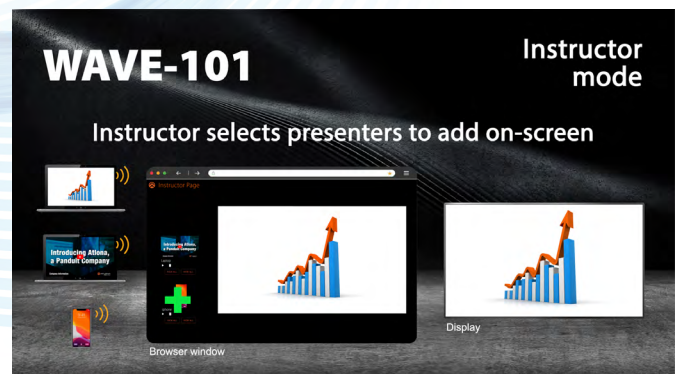
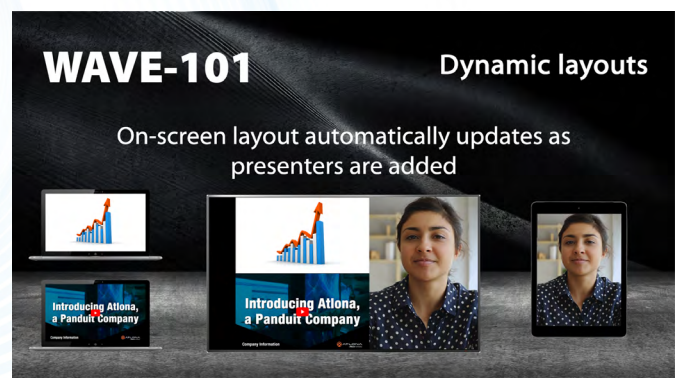
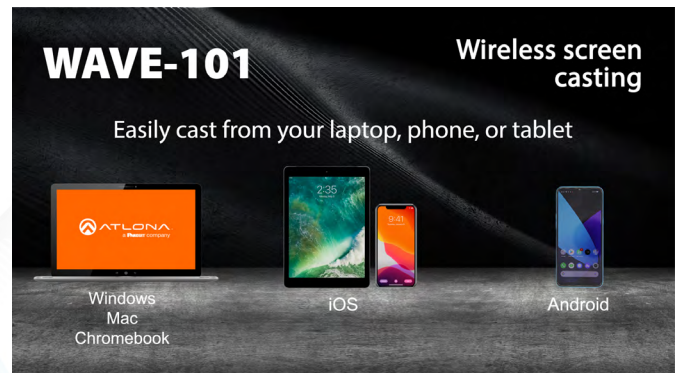
For hands-free, effortless user operation, Dynamic Layout Mode™ is an innovative feature of the WAVE-101 that automatically adapts the on-screen layout to incoming or disconnected source content, to optimize the way the content is presented on the screen.

Instructor Mode

Designed for education applications, Instructor Mode allows moderation of sessions with multiple presenters. When activated, Instructor Mode automatically places each newly connected student device into a queue. Through a web portal, the instructor determines which students can share content with everyone.



For existing AV systems in meeting rooms, the WAVE-101 offers an ideal upgrade opportunity to add wireless AV and many other capabilities such as digital signage playback.



The WAVE-101 is more than a wireless presentation system. It's equipped with a host of convenience features ideal for education and other applications – making this a versatile media device for live streaming broadcasts, digital signage, audio playback, and more.

Media playback

The WAVE-101 lets you play user-uploaded images as well as videos (up to 4K), a great feature for instructors to share multimedia content with students. It can also play content available on YouTube.

YouTube live streaming

Use YouTube™ live streaming to deliver instruction and presentations to support remote participants. This capability is ideal for education applications, and allows content to be delivered to overflow rooms.

Digital signage

The WAVE-101 can serve as a digital signage player, integrating with cloud-based platforms such as DAKboard. This enables simple deployment without the need for a complete digital signage system.

Media storage and playback



YouTube live streaming



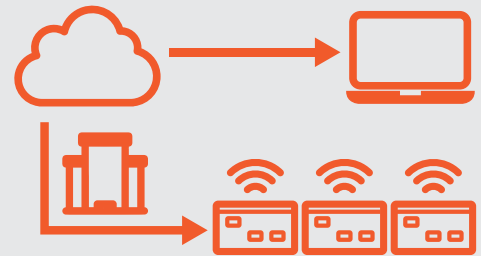
Cloud-based digital signage



Network management

Use the Atlona Management System™ (AMS) to configure, deploy, and manage a fleet of WAVE-101 installations throughout a facility. AMS is part of the Velocity™ System, and lets you access all devices from a web browser for continuous system monitoring, troubleshooting and technical support, and issuing firmware updates.

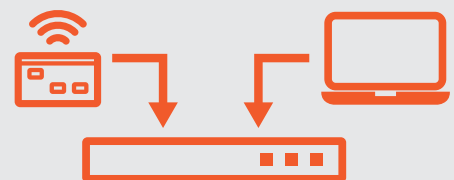
Network management



Ideal for new or existing AV systems

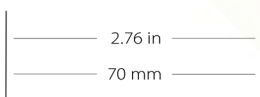
The WAVE-101 is great for a basic setup with a display. It's equally ideal as an upgrade to a new or existing AV system, for adding wireless BYOD and many other presentation capabilities.

AV system add-on



Features

- Wireless AV platform allows simultaneous content sharing for up to four 1080p presenters
- Wireless screen casting with iOS, Android, Mac, Chromebook, and Windows devices through native AirPlay, Google Cast, or Miracast protocols
- Dynamic Layout Mode (patent pending) automatically adapts to incoming or disconnected source content, to optimize the way the content is presented on the screen
- Instructor Mode allows a user to manage content, adjust audio volume, upload and play media content, stream YouTube, and switch between layouts
- Supports YouTube Live streaming
- Supports cloud-based digital signage platforms
- Local storage available for playback of images and video
- Optional Wi-Fi® access point with built-in firewall
- Supports Miracast over Infrastructure for use of facility Wi-Fi or Ethernet network
- Wireless AV interfacing can be selectively enabled or disabled for each native platform
- Supports wireless video up to 1080p30 4:2:0 (up to 1080p60 with Miracast)
- Secure wireless and content sharing with randomly generated passwords and PIN codes, and a configurable firewall
- Supports industry-standard, network security features and protocols such as WPA2-PSK, and AES-128 encryption
- Programmable IP, RS-232 display control (with optional adapter), or TCP proxy (port 9001) display control based on time schedules
- Centrally configure and manage WAVE-101 units with AMS (Atlona Management System)
- Three-year limited product warranty



Specifications

SYSTEM

Operating System	Linux
Processor	Intel® Celeron N4120
Memory	4 GB LPDDR4 (2400)
Storage	64 GB eMMC
Cooling	Fan w/sink

BYOD

Interface	Wireless LAN (optional-included), Gigabit LAN
Casting Protocols	Miracast, Google Cast, and AirPlay
Wireless Resolution	See casting protocol specification
Visible wireless streams	Up to 4

VIDEO

Signal Type	Input - Wireless Output - HDMI®	
Copy Protection	No	
Pixel Clock	600 MHz	
UHD/HD/SD	3840×2160@60/59.9/50/30/29.97/25/24/23.98 Hz 1080p@60/59.9/50/30/29.97/25/24/23.98 Hz 1080i@30/29.97/25 Hz 720p@60/59.94/50 Hz	576p@50 Hz 576i@25 Hz 480p@60/59.96 Hz 480i@30 Hz
VESA	2560×1600 All resolutions are 60 Hz	1280×800 1366×768 1360×768 1152×864 1024×768 800×600 640×480
Color Space	RGB	
Chroma Subsampling	4:4:4	

AUDIO

HDMI Pass-Through Formats	PCM 2.0
Bit Rate	2 Mbps max
Sample Rate	32 kHz, 44.1 kHz

USB

Port	2 x Type A USB
Signal	1 x 2.0 1 x 3.0
Maximum Data Rate	2.0 - 480 Mbps 3.0 - 5 Gbps

Copyright © 2021, Atlona Inc., a Panduit Company. All Rights Reserved. Atlona incorporates HDMI® technology. All other brand names and trademarks or registered trademarks are the property of their respective owners.

For complete product specifications, please visit: atlona.com/at-wave-101



Learn more at: atlona.com/wave

Visit atlona.com for more complete product information, including datasheets and specifications.